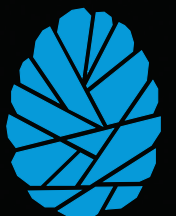




**finedesign**  
CREATIVE AGENCY

# Fabric

## Display Solutions





# Push-fit fabric graphics



“Stunning images can be achieved with today’s modern textile printers.”

## It’s time to change to fabric for your next exhibition

### Fabric printed graphics

Printed images straight on to stretch fabric with a stitched silicone edged graphic, tensioned into a bespoke extrusion aluminium frame. The final result is smooth, seamless, wrinkle free with professional high quality UV graphics.

Graphics can be mounted to walls or ceiling, or free standing to ensure maximum impact. Easy to install and remove, and lightweight for easy transportation. Graphics quickly replaced when required. A tension fabric system gives you a perfect finish every time.

### Embrace, Vector quick fix, Vector LED or Vector modules

- Lightweight fabric
- Quick and easy assemble
- Vibrantly printed
- One piece bespoke shapes
- Machine washable graphics
- LED displays



A silicone edged gasket is sewn directly on the hem of the fabric graphic and is inserted by simply pressing into the extrusion channel of the stand.



# Vector Range

The Vector range is available in several models, and offers an optimal visual impact for original designs that adapt to every environment: showroom, point of sale, retail, shows, museums and many others.

Its textile display with silicone gasket makes it one of the simplest communication solutions on the market.



Simple, quick assembly



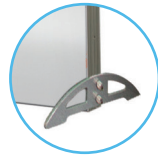
Fabric graphic with silicone edging inserts into frame



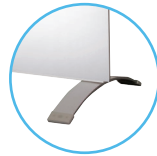
Easy matching system



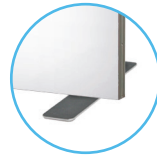
Side channel for stabilising feet



Side Foot



Arched Foot



Flat Foot (sold as singles)



Quarter Side Foot (Allows panels to fit flush with wall)

- Anodised aluminium profile
- Eight different thicknesses for backlit or non-illuminated use
- Self-supporting, double-sided or wall-mounted
- Textile graphic with silicone edged gasket
- Optional accessories for 40 and 50mm profiles
- Custom sizes available
- Manufactured to order

## Kit 1

Model	(h) x (w) x (d) mm
Linear Vector for fabric	2070 x 1000 x 450
Linear Vector for rigid substrate	2070 x 1000 x 450

## Kit 2

Model	(h) x (w) x (d) mm
Linear Vector for fabric	2070 x 2000 x 450
Linear Vector for rigid substrate	2070 x 2000 x 450

## Kit 3

Model	(h) x (w) x (d) mm
Linear Vector for fabric	2070 x 3000 x 450
Linear Vector for rigid substrate	2070 x 3000 x 450



Two pairs of optional flat feet shown (standard foot supplied)



## Vector Straight

Model	(h) x (w) x (d) mm
Vector Straight 50mm	Custom sizes available



LED Floodlight



Side channel for stabilising feet



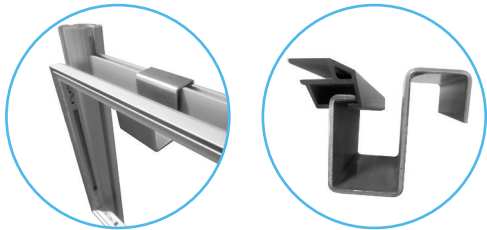
Various styles of stabilising feet available



# Vector Quick Fix

## 20mm Quick Fix Profile

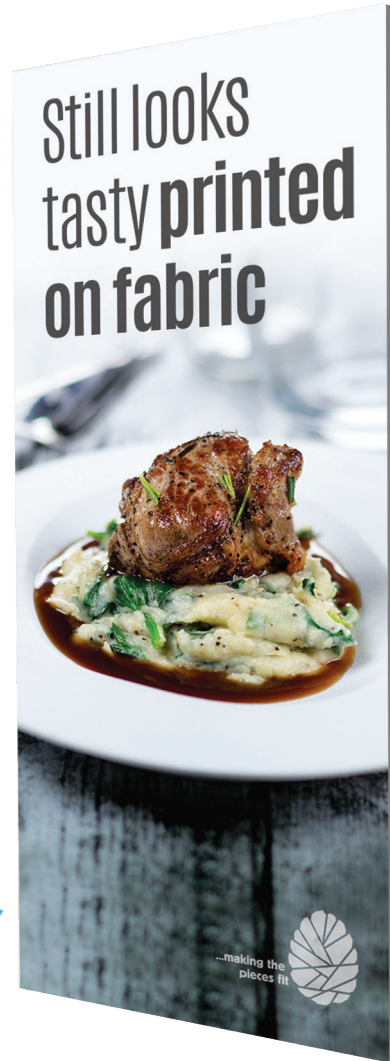
The Vector Quick Fix is the latest innovation in an extra-thin aluminium profile for stretch fabric graphics. Thanks to its versatile design this is a must for office environments and **shell schemes**.



Universal brackets to fit any shell scheme

Ideal for decoration


Sleek aluminium frame

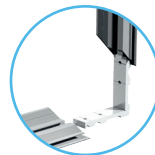


## 20mm Quick Fix Profile

- One profile, two applications: wall frames or shell scheme cladding
- Elegant and discreet thanks to its bevelled shape and its 20mm thickness
- Rear profile for direct mounting to walls
- The assembly of the frame and the installation of the graphics are accessible to all

Model  
20 mm Vector

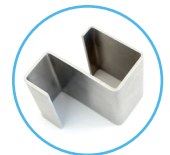
 (h) x (w) x (d) mm  
Custom-made



Assemble angled sections with screw-in bracket



20mm aluminium profile



Optional shell scheme mounting bracket

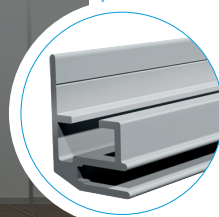
A practical and economical way to decorate your stands

## ... ideal for shell schemes



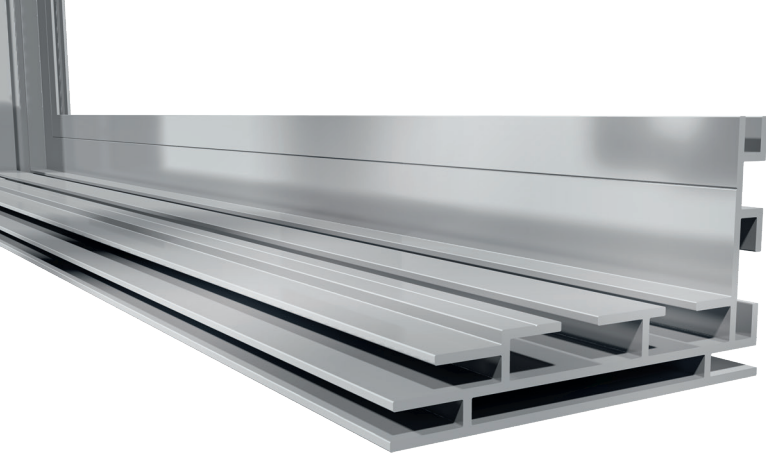
### Technical information

- Anodised aluminium
- Dimensions : 20 x 27 mm
- Weight per m<sup>2</sup>: 0.317 kg
- Strengtheners required for wall application
- Simple assembly
- Textile SEG graphic





# Vector LED on walls



## 75mm LED

Custom / 2 x 1 metre / 2 x 2 metre / 2 x 3 metre

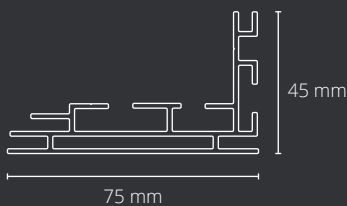
Stand out with innovative and bright designs!

- Available in a range of standard sizes or custom made to order.
- Creates uniform lighting with no shadows on large frames.
- Twin extrusions for inserting two visuals of different materials.
- Sleek, smooth profile for a clean look.
- Wall mountable only (not available as a free-standing unit).
- Linkable LED lighting system, easy to assemble.



### Suitable for:

Point of sale displays,  
showcasing at events,  
reception areas...



### Technical information

- Anodised aluminium
- Weight per m<sup>2</sup>: 1.143 kg
- Single-sided profile
- Flat rear profile for easy wall fixing
- Reinforcement on the back of the profile to slide a rigid panel if necessary



### Accessories

- Linkable LED lighting system. Transformer 24 V.
- Stabilising Foot



# Vector LED free standing

## 100mm LED

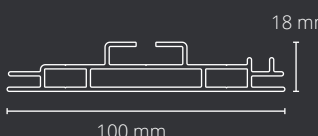
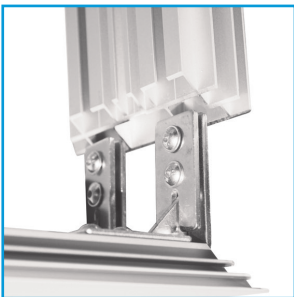
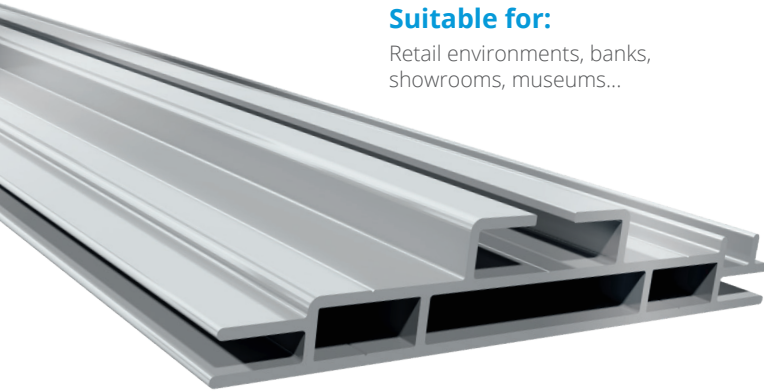
Custom / 2 x 1 metre / 2 x 2 metre / 2 x 3 metre

Economical light boxes, ideal for large-scale projects.

- Available in a range of standard sizes or custom formats.
- Consistent lighting over frame.
- Economical solution, ideal for small and medium lightboxes.
- Linkable LED lighting system, easy to assemble and disassemble.
- Lightweight, free-standing structure.
- Suitable for single or double-sided use.

### Suitable for:

Retail environments, banks, showrooms, museums...

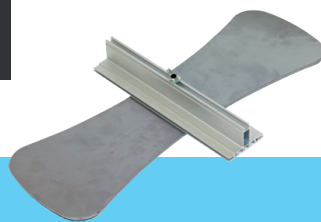


**Technical information**

- Anodised aluminium
- Weight per m<sup>2</sup>: 1.082 kg
- Double-sided profile
- SEG graphic panel

### Accessories

- Stabilising Foot
- Linkable LED lighting system. Transformer 24 V.





# Vector Modules

## Scalable solutions for your needs and budget

From the free-standing image wall to the exhibition stand, Vector Modules offer you versatile designs that can be adapted to any type of event.

This gives you the freedom to redevelop your stand as many times as you want, thus guaranteeing an excellent return on investment.

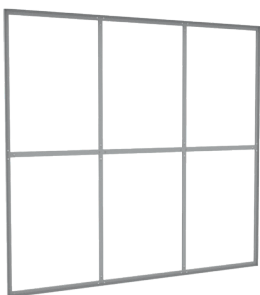
Each module is manufactured with 50mm aluminium profiles, supplied in sections of 1.25m and delivered in cardboard with assembly instructions.

They are ready to be used with the visual of your choice. To ensure the shortest possible time, modules are available from stock.

Once your event is over, store your system in a small box (1350 x 400 x 300mm) or re-use one of the modules to dress up your showroom.

## Go from a stand 3m<sup>2</sup> to a stand 15m<sup>2</sup>

# in the blink of an eye!



### Module A

- Standard channel on four sides
- Vector to Vector fixings included

Model	 (h) x (w) mm
3m Module	2500 x 2950 mm



### Module B


- Standard channel on four sides
- Vector to Vector fixings included

Model	 (h) x (w) mm
2m Module	2500 x 1950 mm



### Module C


- Standard channel on four sides
- Vector to Vector fixings included

Model	 (h) x (w) mm
1m Module	2500 x 950 mm



### Module D

- Modular arch
- Two junction profiles 950mm included
- Beam attachment included
- Flat feet included
- Double-sided profile
- Possibility of adding recessed spotlights and a screen holder

Model	 (h) x (w) mm
Arch	Roof: 2500 x 950 mm Inside : 2500 x 950 mm Outside: 2550 x 950 x 2600 mm

# Vector Modules

+ Accessorize your modules with literature holders, shelves or screen mounts

Tips & Tricks



## Module E

- Post in two parts of 1250 mm

Model	(h) x (w) mm
Square Beam	2500 x 50 mm

Used to connect two frames at right angles



Ideal for creating return configurations

## Module F

- Door with threshold bar  
- Lock with keys

Model	(h) x (w) mm
Door	Pediment: 545 x 950 mm Door: 1940 x 942 mm



## Module G

- Corner storage with lockable door  
- Two visible faces  
- Standard channel on four sides  
- Create a taller storage area with the addition of module K  
- Vector and Vector Beam attachments included

Model	(h) x (w) x (d) mm
Return	2500 x 950 x 950 mm Inside: 545 x 950 mm Door: 1940 x 942 mm



Full graphic surround

## Module H

- Full graphic arch  
- Double-sided dressing  
- Possibility of adding recessed spotlights under the overhanging canopy  
- Ability to add TV stand on the front panel  
- Flat feet included

Model	(h) x (w) x (d) mm
Rounded Arch	2550 x 950 x 2600 mm



## Module I

- LED frame 100mm double face  
- Including stabiliser feet  
- Four LED strips and one transformer included  
- Two junction profiles 950mm included  
- Flat feet included

Model	(h) x (w) mm
Advanced LED Arch	2550 x 950 mm

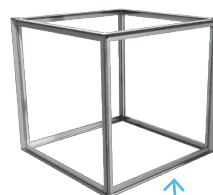
Ideal for creating an LED arch by combining it with a C module



## Module J

- Single-sided 75mm LED frame  
- Four LED strips and one transformer included  
- Vector and Vector Beam attachments included

Model	(h) x (w) mm
LED Module	2500 x 950 mm



## Module K

- Extends full graphic to fit on a square return (module G)  
- Fixings included

Model	(h) x (w) x (d) mm
Return Upgrade	1000 x 1050 x 1050 mm

Four customisable faces



# Vector Modules

Stand 18m<sup>2</sup>

## Storage room

1m<sup>2</sup> return with secured lock. For more stability, the returns are equipped with a threshold bar at the bottom of the doors.

## Create large graphics by adding different modules



## Add additional extra custom-made shelves

## Rounded arch and full graphic

Full graphic front and back. Add more light to your stand with built-in LED spotlights directly under the canopy of the arch.

## Accessories

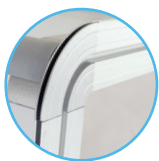
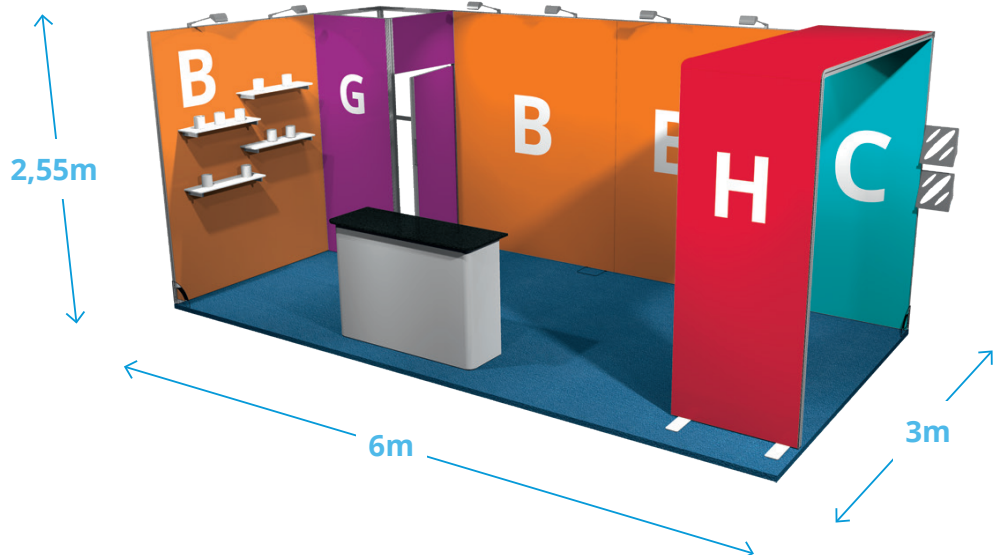
Make your stand more attractive and functional by adding literature holders or shelves.

## 18m<sup>2</sup> Stand

- Profiled aluminium frames 50mm
- Arch with rounded edge
- Printed fabric graphic with SEG

### Model

- Module B (x3)
- Module G
- Module C
- Module H
- Square feet (x2)
- Light 120 Watt (x6)
- Light fixings (x6)



Rounded corner for full graphic design



Door return with lock and key set design

# Vector Modules

## Stand 49m<sup>2</sup>

### 49m<sup>2</sup> Stand

- Profiled aluminium frames 50mm
- Large storage capacity
- Tubular hanging sign with textile cover
- Fabric graphic with SEG

#### Model

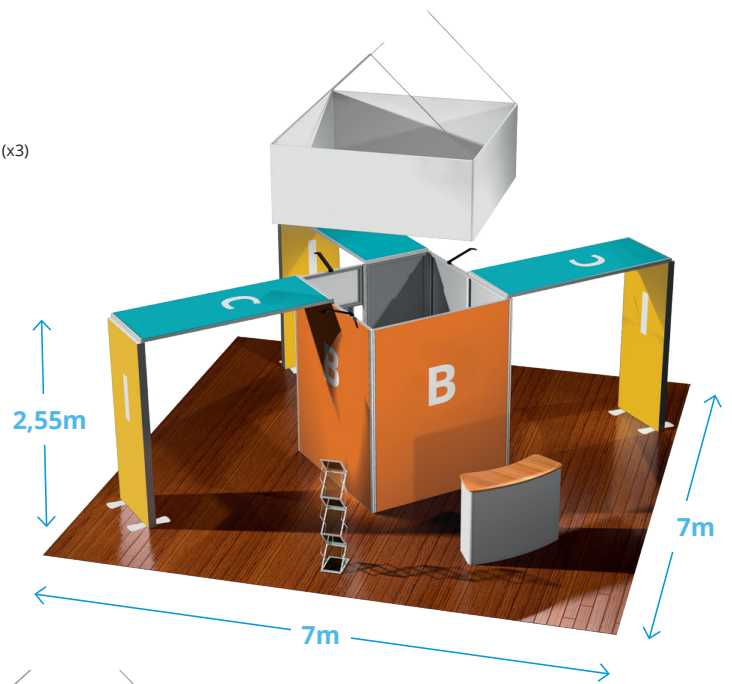
- Module B (x3)
- Module C (x4)
- Module I (x3)
- Module F
- Module E (x5)
- Transformers (x3)



Arches with stabilising feet



Door return with lock and key set



### Suspended formulate hanging structure

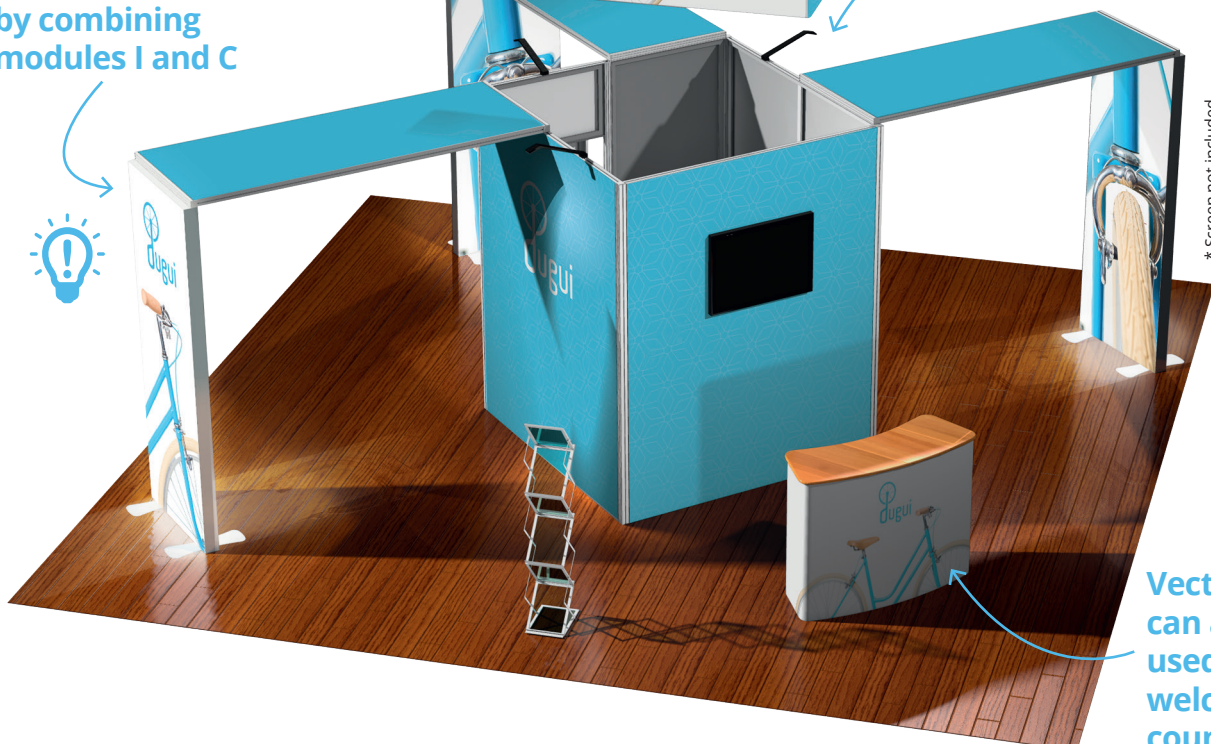
Each hanging structure has metal attachment points attached to the structure, cables not supplied.



### LED Light

The LED spots offer a power of 80W while consuming little energy.

### Create a light arch by combining modules I and C



\* Screen not included

Vector profiles can also be used to create welcome counters



# Embrace Backwalls

The ideal combination of a collapsible practical stand with push-fit seamless fabric graphic for a perfect finish.

## Embrace

- Lightweight, simple assembly, anodised straight silver frame
- Complete with stabilising feet
- Push-fit fabric graphics create crisp straight edges
- Perimeter channel bars connect to frame and hold push-fit fabric graphics
- Can be used front only or with ends
- Additional bars can connect for double sided use
- Frames can be linked together to create larger walls

Model	(h) x (w) x (d) mm
3 x 1	2255 x 790 x 328 mm
3 x 2	2255 x 1523 x 328 mm
3 x 3	2255 x 2239 x 328 mm
3 x 4	2255 x 2972 x 328 mm
Straight Connection Bracket	
L Link Connection Bracket	

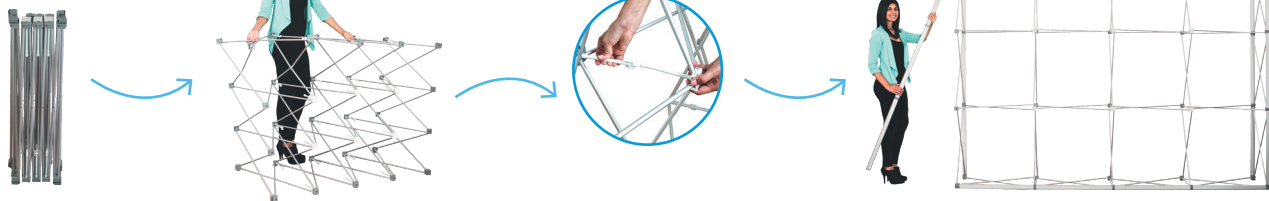
Perfect fabric tension for crisp seamless graphics



Frames can be linked to create wider or taller displays



Locks together with clips



Channel bars for insertion of fabric graphics easily connect and slide onto collapsible frame

Easy push-fit fabric graphics go into channel



Easy snap arms





# finedesign

CREATIVE AGENCY

Gwydir House • 16 Creek Road  
March • Cambridgeshire • PE15 8RD

f: +44 (0)1354 658 581

e: [studio@finedesign.co.uk](mailto:studio@finedesign.co.uk)

t: +44 (0)1354 650 679

[www.finedesign.co.uk](http://www.finedesign.co.uk)



[facebook.com/finedesignltd](https://facebook.com/finedesignltd) • [twitter.com/finedesign\\_](https://twitter.com/finedesign_)

