



THE **DISPLAY** HANDBOOK



A creative solution for every need

Create greater brand awareness and stand out from the crowd

Our extensive portfolio of display products includes everything from portable A-sign boards, roller banners through to custom built exhibition stands, helping brands to creatively capture the attention of their target audience with a variety of display solutions and vibrant printed graphics.



Best seller



Made in Europe



1 Year hardware guarantee



Use with fabric graphic



5 Year hardware guarantee



Use with PVC graphic



Comes with bag



Use with self-adhesive graphic



Illuminated product



Use with rigid panel graphic



Available for use outdoors



Direct printing onto hardware



Custom sizes available



Made in UK



Contents

A solution for every requirement	4
Lightboxes	6
Illuminova™	8
Illumigo™	13
Display Stands	18
Modulate™	21
Vector	34
Fastframe™	55
Arena Structures	74
Hanging Structures	78
Display Backwalls	80
Pop-up Backwalls	82
Fabric Tube Walls	89
Tension Walls	90
Display Banners	92
Tension Textile Systems	94
Roller Banners (economy)	97
Roller Banners (standard)	99
Roller Banners (premium)	101
Tension Banners	107
Display Signs	108
Free-Standing Signs	110
Wall Mounted and Suspended Signs	115
Display Boards	116
Flags	122
Free-Standing Flags	124
Post / Wall Mounted Flags	128
Mobile Flags	129
Tents	130
Pop-up tents	132
Inflatable Tents	135
Counters	136
Promotional counters	138
Illuminated Promotional Counters	142
Barriers	144
Pedestrian Control Barriers	146
Ancillaries	148
Literature Holders	150
Lighting	151
Lighting Ancillaries	153
Portable Transportation Cases	154
Index	158





A solution for every requirement

Our comprehensive range of Creative Display Solutions

Whether you are looking for a display stand to give your brand standout at an upcoming exhibition, or marketing collateral to support a pop up store or event, our extensive portfolio of products has you covered. So whatever your industry or application, we have an innovative creative display solution to give your messaging standout.

01 Lightboxes

Create outstanding visual impact with back lit or edge lit LED graphics, ideal for temporary, permanent and customised applications.



02 Display Stands

Complete exhibition stand solutions, incorporating hanging structures, modular stands, towers and customised stands



03 Display Backwalls

Large format graphic backdrops ideal for conferences, promotional activities and events



04 Display Banners

Portable display options, ideal for temporary deployment



05 Display Signs

Professional wall, floor and suspended signage solutions



06 Flags

Attract attention at a distance through movement with eye-catching flag solutions



07 Tents

Perfect temporary shelters, pop-up shops and market stalls for outdoor use



08 Counters

Adaptable and portable temporary counters for promotional, display and exhibition applications



09 Barriers

Easy and convenient barrier systems to manage queues, control crowds and create temporary areas



10 Ancillaries

Accessories designed to increase the functionality of a chosen product range



For outstanding visual impact in interior spaces, lightboxes are the perfect option.

Vibrant graphics, edge lit or back lit with energy saving LEDs, create focal points that add depth and drama to retail spaces, exhibition stands, commercial properties and beyond.

Whether wall mounted, free-standing or suspended at height, LED lightboxes are the ideal showcase for brand messaging and statement imagery.

We offer two ranges of lightbox solutions. The Illuminova™ range combines vivid SEG fabric graphics with a sleek profile in a choice of standard or custom dimensions. For instant impact, our portable Illumigo™ range is available in a variety of standard sizes to bring your retail space to life.



The Illuminova™ range encompasses wall mounted, hanging and free-standing LED lightboxes in a choice of standard or custom sizes. Ideal for adding visual interest to feature walls and shop windows as well as transforming areas with low ambient lighting. Easily refreshed with updated graphics, Illuminova™ provides the perfect framework to display enhanced vibrant messaging.



iLLUMiGO™

The Illumigo™ LED lightbox range combines stunning graphic illumination with instant, tool-free assembly. For ease of transportation and storage, the aluminium LED frames are lightweight and come in a handy carry case. Simply update the graphics, for a fresh and sustainable way to transform spaces with light.

30mm Illuminova™ wall mounted







With its sleek and narrow profile, the 30mm Illuminova™ LED back lit wall-mounted lightbox is ideal for showcasing standout messaging in interior displays. Illuminated using a powerful linkable LED display system for consistent lighting across the graphic. Available in standard and custom sizes



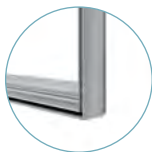
Material	Aluminium
Profile width	30 mm
Profile Colour	Anodised Silver
Assembly	Connectors assemble using Allen key
Mounting	Wall mounted
Graphic area	Single-sided
Graphic attachment	Silicone Edged Graphics (SEG)
LED System	Back lit

• Available fully assembled or in Kit form

illuminova™ 30mm 594x854mm	ILLNO-30-05X08	 594(w) x 854(h) x 30(d) mm
illuminova™ 30mm 854x1189mm	ILLNO-30-08X11	 854(w) x 1189(h) x 30(d) mm
illuminova™ 30mm 1000x1000mm	ILLNO-30-10X10	 1000(w) x 1000(h) x 30(d) mm
illuminova™ 30mm 2000x1000mm	iLLNO-30-20X10	 2000(w) x 2000(h) x 30(d) mm



Back lit panels



30mm profile

illumiNOVA® is a **breathtakingly vibrant**
illuminated Display Solution

75mm Illuminova™ wall mounted

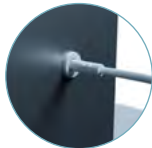


Create a striking focal point with the 75mm Illuminova™ LED edge lit wall mounted lightbox. Available in standard and custom sizes, the linkable LED lighting system delivers consistent lighting for a dramatic visual display.



Material	Aluminium
Profile width	75 mm
Profile Colour	Anodised Silver or custom White or Black
Assembly	Connectors assemble using Allen key
Mounting	Wall mounted
Graphic area	Single-sided
Graphic attachment	Silicone Edged Graphics (SEG)
LED System	Edge lit + Pre-installed LED lighting

illuminova™ 75mm wall mounted 1000x1000mm	iLLNO-75-10X10	⊗ 1000(w) x 1000(h) x 75(d) mm
illuminova™ 75mm wall mounted 1500x1500mm	iLLNO-75-15X15	⊗ 1500(w) x 1500(h) x 75(d) mm
illuminova™ 75mm wall mounted 2000x1000mm	ILLNO-75-20X10	⊗ 2000(w) x 1000(h) x 75(d) mm
illuminova™ 75mm wall mounted 2000x2000mm	ILLNO-75-20X20	⊗ 2000(w) x 2000(h) x 75(d) mm
illuminova™ 75mm wall mounted 3000x2000mm	ILLNO-75-30X20	⊗ 3000(w) x 2000(h) x 75(d) mm



Cable system



LED strip lighting



Numbered system for
easy assembly



100mm Illuminova™ Free-standing



The double-sided 100mm Illuminova™ LED edge lit free-standing lightbox creates a dramatic visual statement for your interior displays. The plug and play linkable LED display system makes for a simple set up, whilst the SEG graphics can be easily replaced to support new messaging.

Material	Aluminium
Profile width	100 mm
Profile Colour	Anodised Silver
Assembly	Connectors assemble using Allen key
Graphic area	Double-sided
Mounting	Free-standing
Graphic attachment	Silicone Edged Graphics (SEG)
LED System	Edge lit + Pre-installed LED lighting

illuminova™ 100MM 3000X2000MM	ILLNO-100-30X20	 3000(w) x 2007(h) x 550(d) mm
-------------------------------	-----------------	---

Measurements include feet



Available in standard
and custom sizes



Mitred sections assemble
with Allen key connectors



Cable system



LED strip lighting

125mm Illuminova™ Free-standing



For outstanding visual impact, the robust double-sided 125mm Illuminova™ LED edge lit free-standing lightbox is a must. Available in standard and custom sizes, the plug and play linkable LED display system ensures vibrant lighting across the SEG graphic.

Material	Aluminium
Profile width	125 mm
Profile Colour	Anodised Silver or custom white or black
Assembly	Connectors assemble using Allen key
Double-sided	Double-sided
Mounting	Free-standing
Graphic attachment	Silicone Edged Graphics (SEG)
LED System	Edge lit + Pre-installed LED lighting

Illuminova™ 125mm 3000x2000mm	ILLNO-125-30X20	ⓐ 3000(w) x 2007(h) x 550(d) mm
Illuminova™ 125mm 3000x2500mm	ILLNO-125-30X25	ⓐ 3000(w) x 2507(h) x 550(d) mm
Illuminova™ 125mm 4000x2000mm	ILLNO-125-40X20	ⓐ 4000(w) x 2007(h) x 550(d) mm

Measurements include feet

Available in standard and custom sizes



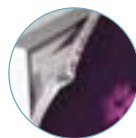
Cable system



LED strip lighting



Mitred sections assemble with Allen key connectors






Silicone Edged Graphics (SEG)

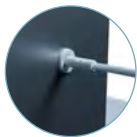
125mm Illuminova™ Hanging Structure



Ideal for exhibitions and retail venues, the 125mm Illuminova™ hanging LED structure is the perfect medium for brand messaging and wayfinding. Sleek, yet lightweight and robust, the double-sided aluminium frame is edge lit with energy efficient LEDS for an eye-catching suspended display. Available in standard and custom sizes, this vibrant lightbox creates the perfect backdrop for dynamic SEG graphics.

Material	Aluminium
Profile width	125 mm
Profile Colour	Anodised Silver. White and black are available as custom
Assembly	Sling (cables not included). Connectors assemble using Allen key
Double-sided	Double-sided
Mounting	Hanging
Graphic attachment	Silicone Edged Graphics (SEG)
LED System	Edge lit + Pre-installed LED lighting

Illuminova™ 125mm hanging 2500x1000mm	ILLNOH-125-25X10	 2500(w) x 1000(h) x 125(d) mm
Illuminova™ 125mm hanging 3500x1000mm	ILLNOH-125-35X10	 3500(w) x 1000(h) x 125(d) mm
Illuminova™ 125mm hanging 5000x1250mm	ILLNOH-125-50X12	 5000(w) x 1250(h) x 125(d) mm



Cable system



LED strip lighting



Mitred sections assemble with Allen key connectors



Silicone Edged Graphics (SEG)



Illumigo™ Up



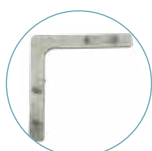
The Illumigo Up transforms portable lightbox displays with its innovative design. Featuring a pre-assembled scissor frame and integrated energy-efficient LED lights, it offers effortless setup in minutes. Use it as a standalone lightbox or connect multiple units with the integrated magnets and additional optional connectors to create a striking backwall display. The vibrant SEG graphics are easily interchangeable, making it simple to update your message. Plus, the optional document holder provides a convenient way to showcase supporting materials.



Material	Aluminium
Profile width	80 mm
Profile Colour	White
Assembly	Tool-free
Graphic area	Double-sided
Graphic attachment	Silicone Edged Graphics (SEG)
Application	Self-supporting with pivoting feet fixed to the structure
Transport	Wheeled carry bag



Illumigo™ Up	ILLGO-UP	@ 1000(w) x 2020(h) x 400(d) mm
--------------	----------	---------------------------------



Optional
90° connector
ILLGO-90TC



Optional
T Shape connector
ILLGO-TC



Optional
Middle connector
ILLGO-90MIC



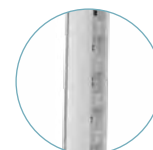
Optional A4
literature stand
ILLGO-LH-A4



Simply fold the
frame and twist
the feet to pack
away.



Illumigo™ bag



Vertical lights

Illumigo™ One

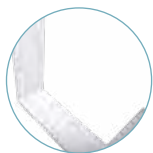


Illumigo™ One is a vibrant portable single-sided lightbox with the option to have a rear-facing textile graphic unit. Standing 2000mm high and 850mm wide, the slim 60mm profile has a white powder coated finish and benefits from tool-free plug and play assembly due to an easy to follow numeric system, rollable LED panel and pre-assembled twist-out feet.

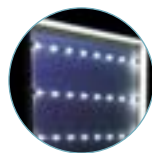


Material	Aluminium
Profile width	60 mm
Profile Colour	White
Assembly	Tool-free
Graphic area	Single-sided
Graphic attachment	Silicone Edged Graphics (SEG)
Application	Self-supporting with pivoting feet fixed to the structure
Transport	Protective box with carry handle

Illumigo™ One	ILLGO-ONE	Ⓢ 850(w) x 2010(h) x 390(d) mm
---------------	-----------	--------------------------------



Tool-free assembly



Rollable LED panel



Single-sided frame



Optional Illumigo™ bag



850 mm

Illumigo™ 2x1

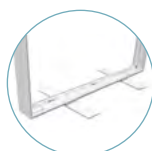


Illumigo™ is an innovative portable LED lightbox that comes in a protective compartmented box with handle for ease of transportation. Deploys tool-free in minutes thanks to pre-assembled LED lighting and push-fit optional dye-sublimated graphics.

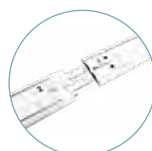


Material	Aluminium
Profile width	100 mm
Profile Colour	White
Assembly	Tool-free
Graphic area	Double-sided
Graphic attachment	Silicone Edged Graphics (SEG)
Application	Self-supporting with pivoting feet fixed to the structure
Transport	Protective box with carry handle

Illumigo™ - 2x1	ILLGO-2X1	Ⓢ 1000(w) x 2010(h) x 400(d) mm
Illumigo™ bag	ILLGO-BAG	Ⓢ 460(w) x 1160(h) x 400(d) mm



Supplied with twin twist-out feet



Numbered system for easy assembly



Pre-installed LED lights



Branded protective compartmented box



Optional Illumigo™ bag



Illumigo™ Retail



Illumigo™ Retail is an innovative portable LED lightbox that is specifically designed for retail environments because of its size and stability. The 1600 x 600mm double-sided illuminated display comes in a protective compartmented box with handle for ease of transportation. Deploys tool-free in minutes thanks to pre-assembled LED lighting and SEG optional dye-sublimated graphics.

Material	Aluminium
Profile width	100 mm
Profile Colour	White
Assembly	Tool-free
Graphic area	Double-sided
Graphic attachment	Silicone Edged Graphics (SEG)
Application	Self-supporting with flat base fixed to the structure
Transport	Protective box with carry handle

Illumigo™ Retail	ILLGO-RETAIL	600(w) x 1600(h) x 285(d) mm
------------------	--------------	------------------------------



Pre-installed LED lights



Connector



Branded protective compartmented box



Optional Illumigo™ bag



Illumigo™ 2x2



Illumigo™ is a complete portable 2x2m double-sided aluminium lightbox display system. Simple to deploy with tool-free assembly. Just remove from the box, twist out the feet from the base panel and use the matching numerical system to connect the remaining extrusions remembering to insert the horizontal bar. SEG graphics fit into the frame channel and the power cable inserts under the base panel. Plug and play in less than 10 minutes!

Material	Aluminium
Profile width	100 mm
Profile Colour	White
Assembly	Tool-free
Graphic area	Double-sided
Graphic attachment	Silicone Edged Graphics (SEG)
Application	Self-supporting with pivoting feet fixed to the structure
Transport	Protective box with carry handle

Illumigo™ 2x2	ILLGO-2X2	2000(w) x 2010(h) x 400(d) mm
---------------	-----------	-------------------------------



Metal straight connector



Numbered system for easy assembly



Illumigo™ Counter



This versatile and quick to set-up double-sided counter lightbox is a great all-rounder not only at events but in retail environments from shopping centres to pop-up shops. Part of the Illumigo™ range, the Illumigo™ Counter is easy to assemble with a two-part counter-top that secures using a pair of twist out top locators and locking screws. Building the unit is intuitive and tool-free as all the parts are numbered and simply slot together. Two optional graphics complete the look to create an impactful counter ideal for attracting attention in retail, event or exhibition environments.

Material	Aluminium 100 mm, MDF table top
Assembly	Tool-free
Collapsible	Yes
Counter top	White
Graphic attachment	Silicone Edged Graphics (SEG)
Transport	Protective box with carry handle
LED System	Led strips included

Illumigo™	ILLGO-COUNTER	1040(w) x 1045(h) x 420(d) mm
Illumigo™ Bag	ILLGO-BAG	460(w) x 1160(h) x 190(d) mm



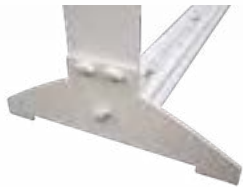
Optional Illumigo™ bag



Protective compartmented box



Pre-assembled LEDs in the frame



Steel side feet for stability





Display Stands are the perfect solution for an array of different applications.

From exhibitions, conferences, events, retail event zones to window displays and product showrooms; their uses are unlimited. The perfect stand will showcase and increase the opportunity to interact with existing and potential customers by creating engaging, and innovative brand promotion and messaging.

Our Display Stands range of products include hanging structures to attract interest from a distance along with versatile modular stand components to create truly contemporary and captivating exhibition spaces. The collective modular systems; Modulate™, Vector, Arena and Fastframe™, are all designed to work in unison, to deliver a re-usable and reconfigurable exhibition stand. Graphics can be easily updated, and layouts refreshed over and over again. These hard working modular solutions offer exceptional return on investment as well as a sustainable approach to creative display.

Creating an effective display stand that drives results is extremely straightforward with this collection of pre-configured solutions. Simply select a design for inspiration whilst considering floor size and parameters of price-point. For a more unique stand construction, the modular range can also be customised - incorporating precise requirements with all the benefits that modular exhibition systems offer for complete creative innovation.





Fastframe™

Vector

Stand component systems

Modulate™

Modulate™ is the fusion between two of our original concepts: Formulate and Vector. The range is composed of various frames made of aluminium tubes, equipped with the patented magnet system: MagLink.

Modulate™ provides a custom build solution through its hundreds of possible configurations using the various modules.

Vector

One of the simplest and most versatile communication solutions on the market, Vector is an aluminium frame system with a stretched fabric graphic that adapts to any environment. With a variety of different profiles, all applications are possible: suspended, wall-mounted, self-supporting, double-sided or illuminated utilising Illuminova™.

Fastframe™

A unique pre-assembled foldable framework for fast construction and endless Creative Display Solutions - the perfect seamless backdrop for visually striking SEG graphics.

Arena

Arena is a tubular aluminium gantry structure that is both extremely strong and light. The different sections can be assembled according to the space and can be covered with fabric or vinyl graphics.

Hanging Structures

Select one of our lightweight Formulate hanging structures to complement your stand design, which uses a lightweight 30mm tubular system that can be neatly wrapped in a fabric printed graphic.

Considerations for exhibitions

Why exhibit at a trade show?

Trade shows remain the preferred communication channel for companies seeking to increase their reputation and promote their image.

The benefits of a trade show are vast and very attractive. They enable several actions to be carried out in a relatively short period of time:

- Brand positioning
- Prospecting
- Market research
- Product launches
- Building customer loyalty
- Business networking

The centrepiece: your stand

The success of any trade show depends on its cost vs quality and ROI for generating leads and meeting other sales / marketing objectives.

1. Location:

How much space? How many open sides?

2. The design:

Which media: textile, rigid, flexible panels?

Need to communicate in height: sign,

extension or extension of storage room?

Do you need a storeroom to store equipment?

What kind of lighting?

3. Use:

How often?

Will it need to be scalable in shape and size?

What means of transport do you have?

Will the stand be reused in another environment
i.e. customer showroom, inhouse events etc.?

4. The budget :

What is the budget for the stand?

Over how many shows will it pay for itself?

The keys to success

To have a successful trade show, it is essential to:

- Set 3 to 5 objectives that will guide the marketing strategy of the event
- Ensure maximum visual impact with a quality stand that will enhance the company's image (openings, suspended communication, graphics, materials, etc.)
- Implement effective communication and promotion: before, during and after the event (emailing, invitation, social networks, stand promotion, etc.)

Why choose a modular stand?

- Lightweight and compact
- Reconfigurable
- Quick payback
- Durable
- Easy to assemble
- Standard or custom made
- Unlimited message renewal
- Ergonomically friendly



MODULATE™

Modulate™

The best way to attract attention

Modulate™ is the fusion of two original concepts that have proven successful in the exhibition and retail worlds; Formulate and Vector.

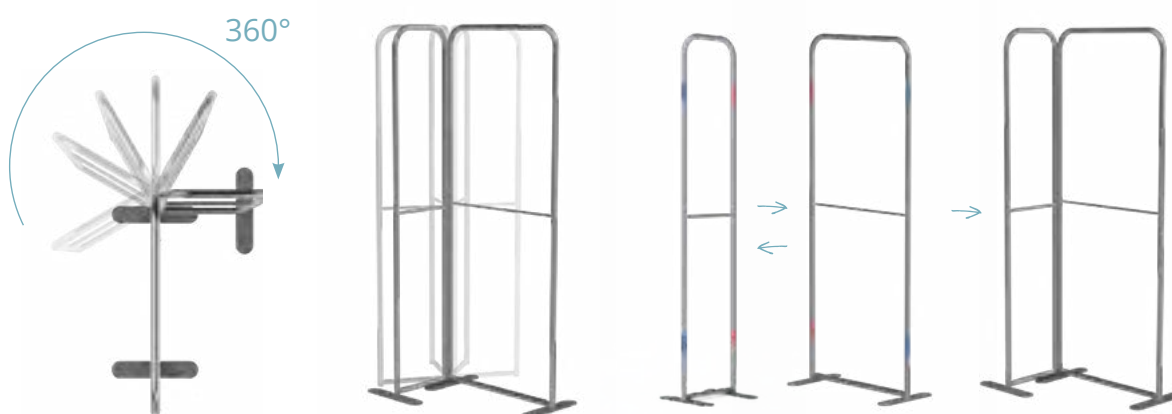
Modulate™ is a collection of various frames made from aluminum tubes and covered with a printed textile cover. These frames can be easily connected to each other by means of powerful magnets placed inside each structure.

Based on this simple magnetic principle, it is possible to combine the different Modulate™ frames to create configurations for all communication areas: at the point of sale, at trade shows, in exhibition areas, in shopping centres or simply within companies themselves.

MagLink connector, simple, fast and reconfigurable



Thanks to the exclusive MagLink magnetic system integrated into the structure, you can connect the frames to each other simply by bringing them together.



Optional 400 mm extension to change the height of the structures



MagLink connectors 360° in each post



Modulate™ carry bag with dedicated slots for feet and graphics



Intuitive marking on each section for easy assembly



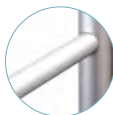
Self-locking system with a push-fit button



Rounded or straight corners with the reference MOD-SQ-ANGLE



2 stabilising feet with Twist & Lock system, supplied with each frame



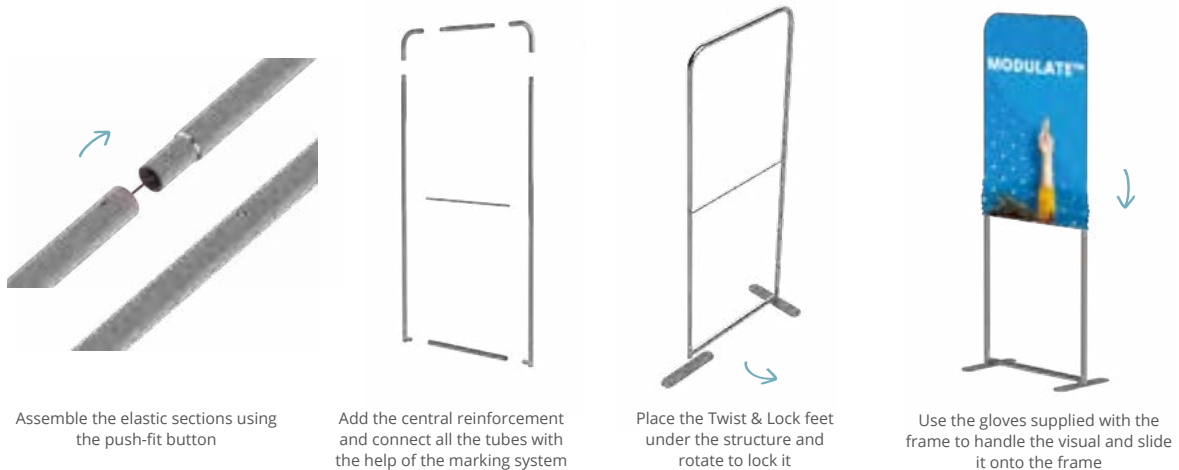
Central reinforcement bar (18 mm diameter)



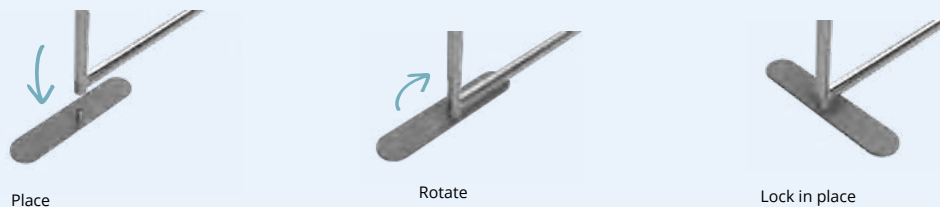
Double-sided custom printed fabric graphic that zips closed

Tool-less assembly

Modulate™ structures are easy to assemble without tools. Each section is marked with numbers and colours and connected with push buttons. Once the structure is assembled, the Twist & Lock feet will rotate a quarter of a turn until they lock into a perfectly stable self-supporting frame. Finally pull-on the printed fabric graphic which perfectly fits to the contour of the frame.

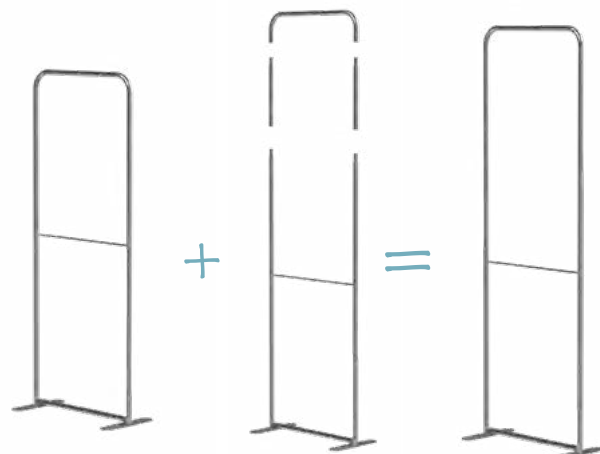


Twist & Lock Foot installation



Structures with unique technological innovations

To add versatility to Modulate™ structures, a 400 mm tubular extension can be added. With this extension, which is easily placed between two sections, you can use the same frame with two different heights.



Standard Modulate™ Frames

Modulate™ is an innovative double-sided display system that consists of a set of lightweight aluminium frames covered with a custom printed tension fabric graphic. Frames connect together using powerful magnets encased inside each element and can be joined at any angle to create shaped displays or backwalls. Frames are completed by pulling a tension-fit fabric graphic over the frame and zipping at the base. Frames are available in various widths and two height options. Each frame is supplied with two stabilising feet which can be used if required for extra stability. The Modulate™ Straight frames can be used on their own or combined with other frames to create hundreds of configurations.

Material	Aluminium
Tube	30mm Ø
Assembly	Tool-free push-button connectors
Shape	Straight
Graphic area	Double-sided
Graphic attachment	Zippered tension-fit graphic
Application	Free-standing with feet (included)
Transport	Modulate™ carry bag with dedicated pockets for the feet and graphics

Modulate™ Straight

Modulate™ Straight 420, 424



Straight 420 rounded corners	MOD-S-420	418(w) x 2000(h) x 400(d) mm
Straight 424 rounded corners	MOD-S-424	418(w) x 2400(h) x 400(d) mm
Straight 420 square corners	MOD-S-420-SQ	418(w) x 2000(h) x 400(d) mm
Straight 424 square corners	MOD-S-424-SQ	418(w) x 2400(h) x 400(d) mm



Modulate™ Straight 820, 824



Straight 820 rounded corners	MOD-S-820	818(w) x 2000(h) x 400(d) mm
Straight 824 rounded corners	MOD-S-824	818(w) x 2400(h) x 400(d) mm
Straight 820 square corners	MOD-S-820-SQ	818(w) x 2000(h) x 400(d) mm
Straight 824 square corners	MOD-S-824-SQ	818(w) x 2400(h) x 400(d) mm



Modulate™ Straight 1020, 1024



Straight 1020 rounded corners	MOD-S-1020	1018(w) x 2000(h) x 400(d) mm
Straight 1024 rounded corners	MOD-S-1024	1018(w) x 2400(h) x 400(d) mm
Straight 1020 square corners	MOD-S-1020-SQ	1018(w) x 2000(h) x 400(d) mm
Straight 1024 square corners	MOD-S-1024-SQ	1018(w) x 2400(h) x 400(d) mm



Key

420, 424		2020, 2024	
820, 824		3020, 3024	
1020, 1024		Slope	
1820, 1824		Door	

Modulate™ Straight 1820, 1824



Straight 1820 rounded corners	MOD-S-1820	1818(w) x 2000(h) x 400(d) mm
Straight 1824 rounded corners	MOD-S-1824	1818(w) x 2400(h) x 400(d) mm
Straight 1820 square corners	MOD-S-1820-SQ	1818(w) x 2000(h) x 400(d) mm
Straight 1824 square corners	MOD-S-1824-SQ	1818(w) x 2400(h) x 400(d) mm



Modulate™ Straight 2020, 2024



Straight 2020 rounded corners	MOD-S-2020	2018(w) x 2000(h) x 400(d) mm
Straight 2024 rounded corners	MOD-S-2024	2018(w) x 2400(h) x 400(d) mm
Straight 2020 square corners	MOD-S-2020-SQ	2018(w) x 2000(h) x 400(d) mm
Straight 2024 square corners	MOD-S-2024-SQ	2018(w) x 2400(h) x 400(d) mm



Modulate™ Straight 3020, 3024



Straight 3020 rounded corners	MOD-S-3020	3018(w) x 2000(h) x 400(d) mm
Straight 3024 rounded corners	MOD-S-3024	3018(w) x 2400(h) x 400(d) mm
Straight 3020 square corners	MOD-S-3020-SQ	3018(w) x 2000(h) x 400(d) mm
Straight 3024 square corners	MOD-S-3024-SQ	3018(w) x 2400(h) x 400(d) mm



Modulate™ Slope

Modulate™ Slope



Material	Aluminium
Tube	30mm Ø
Assembly	Tool-free push-button connectors
Shape	Straight
Graphic area	Double-sided
Graphic attachment	Zippered tension-fit graphic
Application	Free-standing with feet (included)
Transport	Modulate™ carry bag with dedicated pockets for the feet and graphics

Slope 1	MOD-SS-824-01	818(w) x 2300(h) x 400(d) mm
Slope 2	MOD-SS-824-02	818(w) x 2400(h) x 400(d) mm



Slope 1

Slope 2

Modulate™ Door



The Modulate™ Door frame joins magnetically to other frames in the Modulate™ range and is tool-free in its design. Constructed from lightweight aluminium tubing with magnets held in the frames to join backwalls together. Complete with optional tension-fit fabric graphic, the door is ideal for store room areas or meeting rooms.

Material	Aluminium
Tube	30mm Ø
Assembly	Tool-free push-button connectors
Shape	Straight
Graphic area	Double-sided
Graphic attachment	Zippered tension-fit graphic
Application	Free-standing with feet (included)
Transport	Modulate™ carry bag with dedicated pockets for the feet and graphics

Modulate™ door rounded corners	MOD-S-DOOR-820	800(w) x 2000(h) x 120(d) mm
	MOD-S-DOOR-824	800(w) x 2400(h) x 120(d) mm
Modulate™ door square corners	MOD-S-DOOR-820-SQ	800(w) x 2000(h) x 120(d) mm
	MOD-S-DOOR-824-SQ	800(w) x 2400(h) x 120(d) mm



2 handles and 1 stop for Modulate™ door included



An adjustable foot included



2 Twist & Lock square feet



The Modulate™ Door can be used with either a left or right-hand handle

Modulate™ ancillaries

Modulate™ Half Feet (pair)

MOD-HALF-FOOT-P	⊗ 80(w) x 6(h) x 215(d) mm
-----------------	----------------------------



Modulate™ Feet (pair)

MOD-FOOT-P	⊗ 80(w) x 6(h) x 400(d) mm
------------	----------------------------



Modulate™ 400mm Extension Kit

MOD-EXT400MM	⊗ 3 tubes 400(h) x 30 (Ø) mm
--------------	------------------------------



Spotlight Clamp for Formulate / Modulate™ Tube

US903	⊗ 48(w) x 32(h) x 50(d) mm
-------	----------------------------



Modulate™ Counter



Modulate™ Counter consists of an innovative aluminium tubular frame, counter-top, and printed tension fabric graphic. Powerful magnets encased inside the frame enables two or more counters to connect using simple magnetic principles. The counter can be used on its own or combined to make a long reception or bar area. Modulate™ Counter can be deployed in minutes, thanks to the tool-less construction. The printed tension fabric graphic will either sit on or under the counter-top to suit the application.

Material	Ø 30mm Aluminium tubes, MDF tabletop/shelf
Assembly	Push-fit button
Collapsible	Yes
Counter top	Black
Shelves	1 (Optional)
Graphic attachment	Zip system
Transport	One padded carry bag, internal flap

Modulate™ Counter	FORM-MOD-CNTR	⊗ 1015(h) x 800(w) x 600(d) mm
Internal shelf	FORM-MOD-CNTR-02	⊗ 9(h) x 770(w) x 571(d) mm



PATENT PENDING

Pre-configured ModulateTM stand examples

This section showcases examples of various pre-configured ModulateTM Stands that can be achieved using the various ModulateTM hardware and ancillaries.

ModulateTM Stand 6m²



Material	Aluminium
Tube	30mm Ø
Assembly	Tool-free push-button connectors
Graphic area	Double-sided
Graphic attachment	Zipped tension-fit graphic

Modulate 800w x 2400h squared corners	1	MOD-S-824-SQ
Modulate 1800w x 2400h squared corners	2	MOD-S-1824-SQ
Modulate 2000w x 2400h squared corners	1	MOD-S-2024-SQ
Half foot (pair)	3	MOD-HALF-FOOT-P
Formulate oval counter	1	FORM-OVAL-CNTR
LED floodlight (x2 + 1 driver)	2	LED-FLOOD-ARM-BDLK
Spot light clamp for modulate	4	US903



Optional Spot
LED-FLOOD-ARM-BDLK



Clamp US903



Supplied with product bags

Modulate™ Stand 9m²



Material	Aluminium
Tube	30mm Ø
Assembly	Tool-free push-button connectors
Graphic area	Double-sided
Graphic attachment	Zipped tension-fit graphic

Modulate 800w x 2400h squared corners	3	MOD-S-824-SQ
Modulate 2000w x 2400h squared corners	2	MOD-S-2024-SQ
Modulate door 800w x 2400h squared corners	1	MOD-S-DOOR-824-SQ
Half foot (pair)	4	MOD-HALF-FOOT-P
Modulate magnetic counter	1	FORM-MOD-CNTR
Modulate counter shelf	1	FORM-MOD-CNTR-02
LED floodlight (x2 + 1 driver)	2	LED-FLOOD-ARM-BDLK
Spot light clamp for modulate	4	US903



Modulate™ cupboard
perfect for storage



Scalable stands go from
9m² to 15m²



Optional Spot
LED-FLOOD-ARM-BDLK



Clamp US903



Supplied with product bags

Modulate™ Stand 12m²



Material	Aluminium
Tube	30mm Ø
Assembly	Tool-free push-button connectors
Graphic area	Double-sided
Graphic attachment	Zippered tension-fit graphic

Modulate 800w x 2400h squared corners	3	MOD-S-824-SQ
Modulate 1000w x 2400h squared corners	1	MOD-S-1024-SQ
Modulate 2000w x 2400h squared corners	2	MOD-S-2024-SQ
Modulate door 800w x 2400h squared corners	1	MOD-S-DOOR-824-SQ
Half foot (pair)	3	MOD-HALF-FOOT-P
Insta LED counter	1	INSTA-CNTR-BLK
Formulate accent 15	1	FMLT-WL15
LED floodlight (x2 + 1 driver)	2	LED-FLOOD-ARM-BDLK
Spot light clamp for modulate	4	US903



Optional Spot
LED-FLOOD-ARM-BDLK



Half feet
Twist & Lock
MOD-HALF-FOOT-P
grey



2 handles and 1 stop
for Modulate™ Door
MOD-S-DOOR-SP-01
included

Modulate™ Stand 15m²



Material	Aluminium
Tube	30mm Ø
Assembly	Tool-free push-button connectors
Graphic area	Double-sided
Graphic attachment	Zippered tension-fit graphic

Modulate 800w x 2400h squared corners	1	MOD-S-824-SQ
Modulate 1000w x 2400h squared corners	2	MOD-S-1024-SQ
Modulate 1800w x 2400h squared corners	2	MOD-S-1824-SQ
Modulate 3000w x 2400h squared corners	1	MOD-S-3024-SQ
Modulate door 800w x 2400h squared corners	1	MOD-S-DOOR-824-SQ
Half foot (pair)	3	MOD-HALF-FOOT-P
Accent 05 - with TV bracket	1	FMLT-WBWA-05-TVH
Insta LED counter	1	INSTA-CNTR-BLK
Illuminova 125mm hanging 2500x1000	1	ILLNOH-125-25x10
LED floodlight (x2 + 1 driver)	3	LED-FLOOD-ARM-BDLK
Spot light clamp for modulate	6	US903



Optional Spot
LED-FLOOD-ARM-BDLK



Half feet
Twist & Lock
MOD-HALF-FOOT-P



Accessorise with a
Modulate™ counter

ModulateTM Stand 18m²



Material	Aluminium
Tube	30mm Ø
Assembly	Tool-free push-button connectors
Graphic area	Double-sided
Graphic attachment	Zippered tension-fit graphic

Modulate 800w x 2400h Squared Corners	1	MOD-S-824-SQ
Modulate 1000w x 2400h Squared Corners	2	MOD-S-1024-SQ
Modulate 1800w x 2400h Squared Corners	2	MOD-S-1824-SQ
Modulate 3000w x 2400h Squared Corners	1	MOD-S-3024-SQ
Modulate Door 800w x 2400h Squared Corners	1	MOD-S-DOOR-824-SQ
Half Foot (Pair)	3	MOD-HALF-FOOT-P
Insta LED Counter	1	INSTA-CNTR-BLK
LED Floodlight (X2 + 1 Driver)	3	LED-FLOOD-ARM-BDLK
Spot Light Clamp For Modulate	6	US903



ModulateTM cupboard - door with handle (without lock)



Modules join tool-free and without any connecting parts

The ease of assembly of the range allows for reconfigurable and reusable solutions: mix and match structures in an instant!

Modulate™ Stand 24m²



Material	Aluminium
Tube	30mm Ø
Assembly	Tool-free push-button connectors
Graphic area	Double-sided
Graphic attachment	Zippered tension-fit graphic

Modulate 800w x 2400h Squared Corners	1	MOD-S-824-SQ
Modulate 1800w x 2400h Squared Corners	2	MOD-S-1824-SQ
Modulate 2000w x 2400h Squared Corners	3	MOD-S-2024-SQ
Modulate Door 800w x 2400h squared Corners	1	MOD-S-DOOR-824-SQ
Modulate Slope 2	1	MOD-SS-824-02
Half Foot (Pair)	3	MOD-HALF-FOOT-P
Accent 05 - With TV Bracket	1	FMLT-WBWA-05-TVH
Modulate Magnetic Counter	1	FORM-MOD-CNTR
Modulate Counter Shelf	1	FORM-MOD-CNTR-02
Illuminova 125mm Hanging 2500x1000	1	ILLNOH-125-25x10
LED Floodlight (X2 + 1 Driver)	3	LED-FLOOD-ARM-BDLK
Spot Light Clamp For Modulate	6	US903
Zed-Up Lite A4	1	AS315-002



Optional Spot
LED-FLOOD-ARM-BDLK



Half feet
Twist & Lock
MOD-HALF-FOOT-P



Accessorise with a
Modulate™ counter



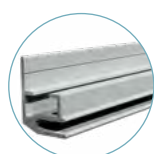
VECTOR

Vector

Visual marketing for every budget

Whether wall mounted or free-standing, the diverse range of Vector aluminium profiles provides a solution for every need and every budget.

Vector offers optimal visual impact and original designs that can be adapted to any event: showrooms, point of sale, exhibitions, museums and many others.



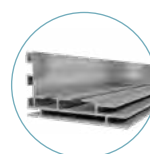
Quick Fix 20 mm



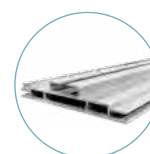
50 mm

Illuminova™ brings your Vector stand to light

Add eye-catching Illuminova™ lightbox modules to your Vector display stand. Available in 4 standard LED modules, (I, J, P, and Q), both systems can be combined to create a striking mix of simplicity and illumination to your exhibition stand.



75 mm LED



100 mm LED

Anodised aluminium profiles

The Vector and Illuminova™ modules are available in a range of aluminium profiles to suit each application. For more information, please consult the table below.

VECTOR
VECTOR

illumiNOVA

illumiNOVA

VECTOR	Wall mounted	Free-standing	Illuminated	Double-sided	Premium range	Various colours
20 mm	x					x
50 mm		x		x	x	
75 mm LED	x	x	x		x	x
100 mm LED		x	x	x		

Vector Modules

An ultra-compact solution

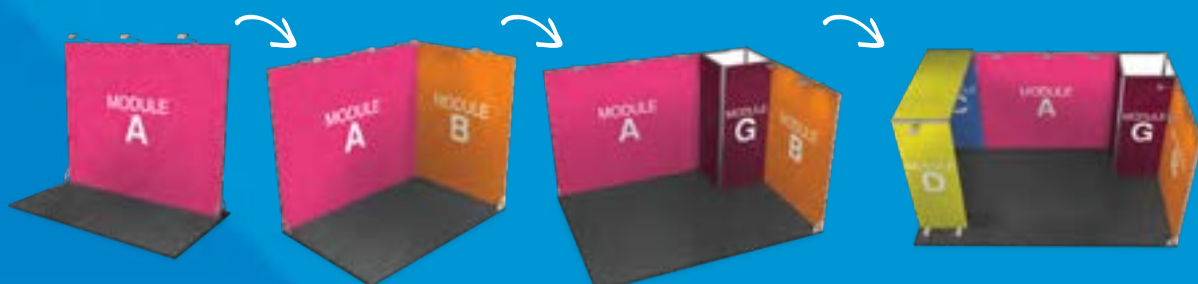
From free-standing textile walls to exhibition stands, the Vector range offers a versatile and adaptable solution for all your events. The Vector frame system with stretched fabric covering is one of the simplest communication solutions on the market, particularly in a stand environment. Scalable, reconfigurable, ultra-portable: go from a 9m² to a 15m² stand with ease. Easily create stands of all sizes and shapes and accessorise them with spotlights, counters, document holders, and anything else you need to display.

A compact solution for portability and optimised storage

Choose the Vector Modules:

- 50 mm aluminium profiles
- Different modules: walls, arches, LEDs, storage...
- Packaged in numbered sections of 1250 mm
- Delivered in a cardboard box with assembly instructions, accompanied by the visual of your choice
- In stock all year round
- Each module is already perforated on 4 sides and equipped with the necessary screws: easily assemble different modules together, one Allen key is the only tool you will need.
- Reconfigurable and reusable: store the stand at home in a small box (1350 x 400 x 300 mm)
- Excellent return on investment

Go from a 3m² stand to a 15m² stand in the blink of an eye!



Vector Modules – Walls



Material	Aluminium
Profile width	50mm
Profile Colour Tube	Anodised Silver
Assembly	Connectors assemble using Allen key
Graphic area	Single and double-sided
Graphic attachment	Silicone Edged Graphics (SEG)

Module A	MODULE-VFF-A	2950(w) x 2500(h) x 50(d) mm
----------	--------------	------------------------------



Module B	MODULE-VFF-B	1950(w) x 2500(h) x 50(d) mm
----------	--------------	------------------------------



Module C	MODULE-VFF-C	950(w) x 2500(h) x 50(d) mm
----------	--------------	-----------------------------



Key

Module A		Module N	
Module B		Module O	
Module C		Module L	
Module M			

Module M	MODULE-VFF-M	@ 2850(w) x 2500(h) x 50(d) mm
----------	--------------	--------------------------------



Module N	MODULE-VFF-N	@ 1850(w) x 2500(h) x 50(d) mm
----------	--------------	--------------------------------



Module O	MODULE-VFF-O	@ 450(w) x 2500(h) x 50(d) mm
----------	--------------	-------------------------------



Module L	MODULE-VFF-L	@ 2800(w) x 2500(h) x 620(d) mm
----------	--------------	---------------------------------



Illuminova™ Modules



Material	Aluminium
Profile width	75mm and 100mm
Profile Colour Tube	Anodised Silver
Assembly	Connectors assemble using Allen key
Graphic area	Single and double-sided
Graphic attachment	Silicone Edged Graphics (SEG)
LED System	Pre-installed LED lighting



Module I	MODULE-VFF-I	950(w) x 2550(h) x 550(d) mm
----------	--------------	------------------------------



Add a C module to turn your I module into an arch

Module J	MODULE-VFF-J	950(w) x 2500(h) x 75(d) mm
----------	--------------	-----------------------------



Module P	MODULE-VFF-P	1850(w) x 2500(h) x 100(d) mm
----------	--------------	-------------------------------



Module Q	MODULE-VFF-Q	1850(w) x 1000(h) x 100(d) mm
----------	--------------	-------------------------------



Consider adding 2 x 1000mm square posts



Key			
Module I		Module Q	
Module J		Module D	
Module P		Module H	

Post Module

EU

Material	Aluminium
Profile width	50mm
Profile Colour Tube	Anodised Silver
Assembly	Connectors assemble using Allen key, Screw-in strips

Module E	MODULE-VFF-E	50(w) x 2500(h) mm x 50(d)
----------	--------------	----------------------------



Modules Vector - Arches

EU

TEX

Material	Aluminium
Profile width	50 mm
Profile Colour Tube	Anodised Silver
Assembly	Connectors assemble using Allen key
Graphic area	Single and double-sided
Graphic attachment	Silicone Edged Graphics (SEG)

Module D	MODULE-VFF-D	2550(h) x 950(l) x 2600(p) mm
----------	--------------	-------------------------------



Module H	MODULE-VFF-H	2550(h) x 950(l) x 2600(p) mm
----------	--------------	-------------------------------



Vector Modules - Storage



Material	Aluminium
Profile width	50 mm
Profile Colour Tube	Anodised Silver
Assembly	Connectors assemble using Allen key
Graphic area	Single and double-sided
Graphic attachment	Silicone Edged Graphics (SEG)

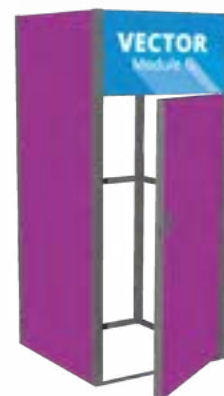
Module F - door and extension hardware	MODULE-VFF-F-2	2500(h) x 950(l) x 50(p) mm Extension: 545 (h) x 950 (l) mm. Door: 1930 (h) x 940 (l) mm
--	----------------	--



Module G - corner storage room hardware	MODULE-VFF-G-2	2500(h) x 1050(l) x 1050(d) mm
---	----------------	--------------------------------



Module G3 - storage room hardware	MODULE-VFF-G3-2	2500(h) x 1050(l) x 1050(d) mm
-----------------------------------	-----------------	--------------------------------



Vector Modules Extensions



Material	Aluminium
Profile width	50mm
Profile Colour	Anodised Silver
Assembly	Connectors assemble using Allen key
Graphic area	Single or double-sided
Graphic attachment	Silicone Edged Graphics (SEG)

Module K	MODULE-VFF-K	1050(w) x 1000(h) x 1050(d) mm
----------	--------------	--------------------------------



Key

Module F		Module G3	
Module G		Module K	



Vector standard stand designs

This section showcases examples of various pre-configured Vector Stands that can be achieved using the various Vector hardware and ancillaries.

Vector Stand 6m²



Material	Aluminium
Profile width	50mm
Profile Colour	Anodised Silver
Assembly	Connectors assemble using Allen key
Graphic area	Single or double-sided
Graphic attachment	Silicone Edged Graphics (SEG)

Vector module B - 1950w x 2500h	2	MODULE-VFF-B
Vector module M - 2850w x 2500h	1	MODULE-VFF-M
Vector module E - post	2	MODULE-VFF-E
Quarter side feet (pair)	1	SLF1P
Formulate oval counter	1	FORM-OVAL-CNTR
LED exhibition light (x2 + 1 driver)	2	LED-EXHIB-ARM-BDLK



Possibility to add
LED Exhibition Light
Code : LED-EXHIB-ARM-BDLK



Angle foot
Code: SLF1P

Vector Stand 9m²



Material	Aluminium
Profile width	50mm
Profile Colour	Anodised Silver
Assembly	Connectors assemble using Allen key
Graphic area	Single or double-sided
Graphic attachment	Silicone Edged Graphics (SEG)

Vector module B - 1950w x 2500h	2	MODULE-VFF-B
Vector module G3 - storage room	1	MODULE-VFF-G3-2
800mm shelf - white	2	LN320-800-WH
Fixing bracket for vector accessories (pair)	2	FX898-01
Shelf or TV fixing bracket beam	2	LN605-CUSTOM-L2
Quarter side feet (pair)	1	SLF1P
Fastframe™ counter	1	FF-COUNTER-BLK
LED exhibition light (x2 + 1 driver)	2	LED-EXHIB-ARM-BDLK



Scalable stands go from 9m² to 15m²



Possibility to add
LED Exhibition Light
Code : LED-EXHIB-ARM-BDLK



Angle foot
Code: SLF1P



Return with lock
and key set

Vector Stand 12m²



Material	Aluminium
Profile width	50mm
Profile Colour	Anodised Silver
Assembly	Connectors assemble using Allen key
Graphic area	Single or double-sided
Graphic attachment	Silicone Edged Graphics (SEG)

Vector module C - 950w x 2500h	2	MODULE-VFF-C
Vector module B - 1950w x 2500h	1	MODULE-VFF-B
Vector module G3 - storage room	2	MODULE-VFF-G3-2
Vector module K - extension	2	MODULE-VFF-K
Formulate accent 15 for Vector	2	FMLT-WL15-V
Quarter side feet (pair)	1	SLF1P
Illumigo counter	1	ILLGO-COUNTER
LED exhibition light (x2 + 1 driver)	2	LED-EXHIB-ARM-BDLK



Possibility to add
LED Floodlight
Code: LED-EXHIB-ARM-BDLK



Return with lock
and key set

Vector Stand 15m²



Material	Aluminium
Profile width	50mm
Profile Colour	Anodised Silver
Assembly	Connectors assemble using Allen key
Graphic area	Single or double-sided
Graphic attachment	Silicone Edged Graphics (SEG)

Vector module C - 950w x 2500h	3	MODULE-VFF-C
Vector module B - 1950w x 2500h	2	MODULE-VFF-B
Vector module A - 2950w x 2500h	1	MODULE-VFF-A
Vector module F- door + extension	1	MODULE-VFF-F-2
Vector module E - post	4	MODULE-VFF-E
Vector module H - radius arch	1	MODULE-VFF-H
TV bracket	1	LN124
Fixing bracket for Vector accessories (pair)	1	FX898-01
Shelf or TV fixing bracket beam	2	LN605-CUSTOM-L2
Quarter side feet (pair)	1	SLF1P
Insta LED counter	1	INSTA-CNTR-BLK
LED exhibition light (x2 + 1 driver)	3	LED-EXHIB-ARM-BDLK



Possibility to add
LED Floodlight
Code: LED-EXHIB-ARM-BDLK



Square post to
create 90° angles



Return with lock
and key set

Vector Stand 18m²



Material	Aluminium
Profile width	50mm
Profile Colour	Anodised Silver
Assembly	Connectors assemble using Allen key
Graphic area	Single or double-sided
Graphic attachment	Silicone Edged Graphics (SEG)

Vector module B - 1950w x 2500h	2	MODULE-VFF-B
Vector module A - 2950w x 2500h	1	MODULE-VFF-A
Vector module G3 - storage room	1	MODULE-VFF-G3-2
Quarter side feet (pair)	1	SLF1P
Insta LED counter	1	INSTA-CNTR-BLK
LED exhibition light (x2 + 1 driver)	3	LED-EXHIB-ARM-BDLK



Silicone Edged Graphics



Return with lock and key set



Possibility to add LED Floodlight
Code: LED-EXHIB-ARM-BDLK

Vector Stand 24m²



Material	Aluminium
Profile width	50mm
Profile Colour	Anodised Silver
Assembly	Connectors assemble using Allen key
Graphic area	Single or double-sided
Graphic attachment	Silicone Edged Graphics (SEG)

Vector module O - 450w x 2500h	1	MODULE-VFF-O
Vector module C - 950w x 2500h	3	MODULE-VFF-C
Vector module N - 1850w x 2500h	2	MODULE-VFF-N
Vector module B - 1950w x 2500h	1	MODULE-VFF-B
Illuminova module P - 1850w x 2500w	1	MODULE-VFF-P
Illuminova module Q - 1850w x 1000h	1	MODULE-VFF-Q
Vector module F - door + extension	1	MODULE-VFF-F-2
Vector module E - post	6	MODULE-VFF-E
Vector module D - arch	1	MODULE-VFF-D
TV bracket	1	LN124
Fixing bracket for Vector accessories (pair)	2	FX898-01
Shelf or TV fixing bracket beam	2	LN605-CUSTOM-L2
Fastframe™ counter	1	FF-COUNTER-BLK
LED exhibition light (x2 + 1 driver)	2	LED-EXHIB-ARM-BDLK



Square post to create 90° angles



Return with lock and key set



Vector free-standing module configurations and ancillaries

3m Wall



Material 50 mm aluminium profile frame
Graphic Fabric graphic with 3mm SEG

Module A (x1)	MODULE-VFF-A
Flat Foot (unit) (x2)	LN155
Side Flat Feet (pair) (x1)	SLF4P

Ideal for creating large picture walls or partitions



6m Wall

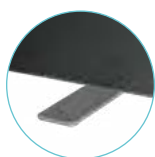


Module A (x2)	MODULE-VFF-A
Flat Feet (x4)	LN155
Side Flat Feet (pair) (x1)	SLF4P

Enhance engagement!
 Attach LED spotlights to your free-standing frames to make graphics bright and eye-catching

Assemble several modules to create very large picture walls

Stabilising feet
 For optimal stability of your structures, add feet at regular intervals.



Vector Modules ancillaries

Quick-fix Mounting Bracket

For hanging frames on shell schemes

Mounting bracket | LN134



Quarter Side Feet (Pair)

SLF1P | 220(h) x 220(w) x 5(d) mm



Flat Foot for retail

Metal foot for free-standing frames
Available colour: Silver

FX295 | 7(h) x 180(w) x 550(d) mm



Flat Foot

Metal foot for free-standing frames

LN155 | 7(h) x 75(w) x 450(d) mm



Side Flat Feet (Pair)

SLF4P | 100(w) x 185(h) x 450(d) mm



Custom Vector stands

The Vector range offers a versatile and adaptable solution for any event. The frame system is scalable and reconfigurable and is dressed with an optional custom printed stretched fabric graphic. The Vector range offers a versatile and adaptable solution for any event.

Vector Custom Stand 24m²

Material	Aluminium
Profile width	50mm
Profile colour	Anodised Silver
Assembly	Connectors assemble using Allen key
Graphic area	Single or double-sided
Graphic attachment	Silicone Edged Graphics (SEG)

Add a touch of originality to your VECTOR stand by integrating FORMULATE



Vector Custom Stand 40m²

Material	Aluminium
Profile width	50mm
Profile colour	Anodised Silver
Assembly	Connectors assemble using Allen key
Graphic area	Single or double-sided
Graphic attachment	Silicone Edged Graphics (SEG)



Vector Custom Stand 40m²

Material	Aluminium
Profile width	50mm
Profile colour	Anodised Silver
Assembly	Connectors assemble using Allen key
Graphic area	Single or double-sided
Graphic attachment	Silicone Edged Graphics (SEG)



Vector Custom Stand 50m²

Material	Aluminium
Profile width	50mm
Profile colour	Anodised Silver
Assembly	Connectors assemble using Allen key
Graphic area	Single or double-sided
Graphic attachment	Silicone Edged Graphics (SEG)



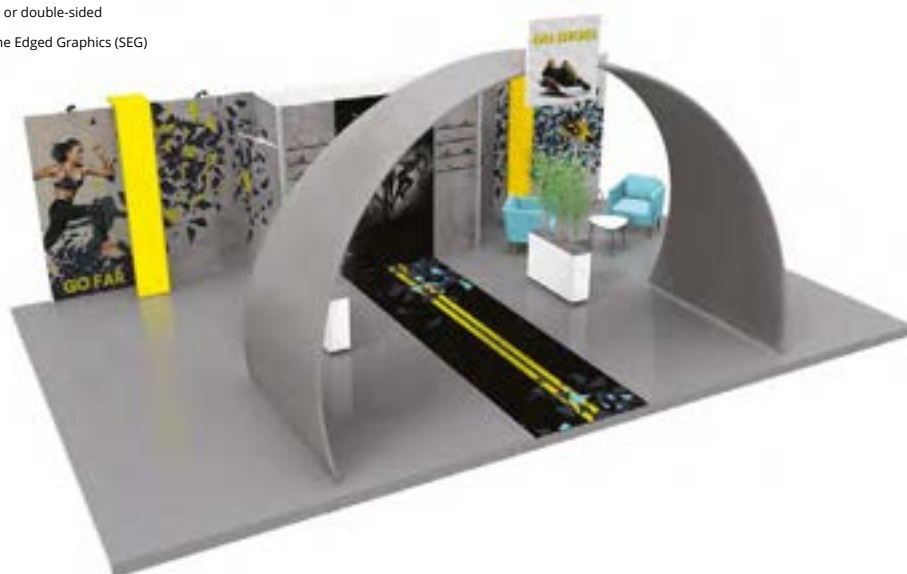
Vector Custom Stand 60m² - Design 1

Material	Aluminium
Profile width	50mm
Profile colour	Anodised Silver
Assembly	Connectors assemble using Allen key
Graphic area	Single or double-sided
Graphic attachment	Silicone Edged Graphics (SEG)



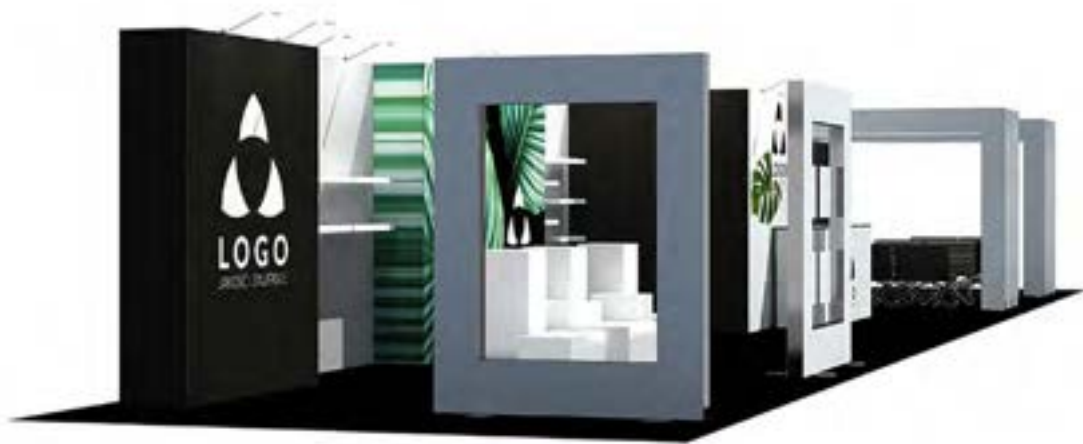
Vector Custom Stand 60m² - Design 2

Material	Aluminium
Profile width	50mm
Profile colour	Anodised Silver
Assembly	Connectors assemble using Allen key
Graphic area	Single or double-sided
Graphic attachment	Silicone Edged Graphics (SEG)



Vector Custom Stand 80m²

Material	Aluminium
Profile width	50mm
Profile colour	Anodised Silver
Assembly	Connectors assemble using Allen key
Graphic area	Single or double-sided
Graphic attachment	Silicone Edged Graphics (SEG)



Ancillaries

Dome Base (Single)

LN102	⊙, Ø 450 mm
-------	-------------



Linear Foot (Pair)

Weights: 1,2 kg

SLF1P	⊙, 220(w) x 220(h) x 5(d) mm
-------	------------------------------



Flat Foot (Single)

Metal for self-supporting frame

Weights: 1,75 kg

LN155	⊙, 7(h) x 100(w) x 450(d) mm
-------	------------------------------



LCD Screen Bracket

Mounting on post or crossbar

LN124	⊙, Screen 37" - 70" (94 - 177 cm)
-------	-----------------------------------



Roll Of Magnetic Tape

EM303	Polarity A-30m x 4 mm
-------	-----------------------



Steel Tape

EM351	15m x 12,7 mm
-------	---------------



Introducing your **innovative**
and **cost-effective** modular
Display Solution.



FASTFRAME™ is a unique, **sustainable** and **user-friendly** Display Solution.



More versatile than a pop-up

Highly configurable
Seamless graphics
Easy to change Silicone
Edge Graphics (SEG)
Many applications



More flexible than a roller banner

Assembled in seconds
Lightweight, highly portable
One frame, multiple graphics
Single or double-sided graphics
Expandable, no joints
Washable stretch fabric
Cost savings through
repeated use



More configurable than an exhibition stand

Expandable – add
modules over time
Quick change design
Excellent space utilisation
Toolless construction
Seamless graphic overlay



Transform your space in seconds using **FASTFRAME™**



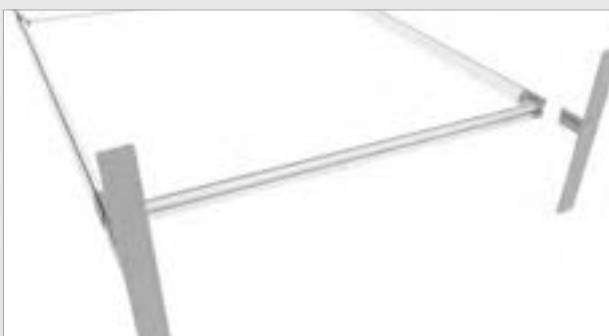
1. Folded state

The lightweight frame is pre-assembled in a convenient, portable carry bag.



2. Unfold

From its pre-assembled state, the frame can then be effortlessly unfolded and locked in place with a central support rod.



3. Components

Feet can be added if required to give additional rigidity to the frame.



4. Install graphics

Your graphics, available in a Standard or Premium finish, can then be applied to the fully assembled frame.

Sustainable exhibitions

With sustainability a key theme for event organisers and exhibitors alike, modular exhibition systems offer an environmentally conscious choice.

- » Made from aluminium, an infinitely recyclable material
- » Using polyester graphic materials which can be recycled multiple times
- » Graphics printed using water based inks
- » One system for multiple display applications



Enjoy **many benefits**, such as:



An efficient tool-less frame

Unit can be constructed and ready in a short amount of time.



Lightweight and ultra slim

Unit is highly portable, making travel and storage much easier.



Seamless graphic

Apply a single graphic to connected frames to create a large seamless display.



Sustainable

Multiple use, not single use.



Interchangeable graphics

Display multiple messages time and time again.

FASTFRAME™ utilises **Silicone Edge Graphics**

- » Fabric graphics are edged with a silicone strip which slots into the channel of the frame for easy installation
- » This is more cost-effective than alternative options and can be re-used multiple times
- » The graphics are printed using water based inks which is more eco-friendly
- » Seamless graphics can be applied to the connected frames for large displays
- » Graphics can be reproduced to deliver new messages

Polyester Stretch Graphics

Stretch textile fabric, 3mm silicone edge.

Black Back Graphics

Black back textile (black out), 3mm silicone edge.

Material	Aluminium
Profile width	40 mm
Profile Colour	Silver
Assembly	Tool-free
Graphic area	Single and Double-sided
Graphic attachment	Silicone Edged Graphics (SEG)
Application	Free-standing
Transport	Fastframe™ carry bag

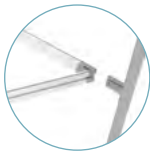
FASTFRAME™ 1000x500 - 2 Pack



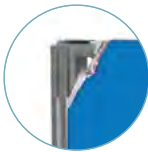
Fastframe™	FF-100X50	1000(w) x 500(h) x 40(d) mm
Fastframe™ (Black back graphic)	G-FF-100X50-BB	1000(w) x 500(h)
Fastframe™ (Polyester stretch graphic)	G-FF-100X50-PS	1000(w) x 500(h)



Portable carry bag



Feet can be added
if required



Silicone Edged
Graphics (SEG)

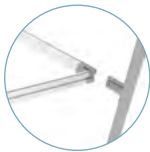
FASTFRAME™ 1000x1000 - 2 Pack



Fastframe™	FF-100X100	1000(w) x 1000(h) x 40(d) mm
Fastframe™ (Black back graphic)	G-FF-100X100-BB	1000(w) x 1000(h)
Fastframe™ (Polyester stretch graphic)	G-FF-100X100-PS	1000(w) x 1000(h)



Portable carry bag



Feet can be added
if required



Silicone Edged
Graphics (SEG)



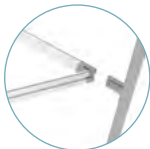
FASTFRAME™950x2000



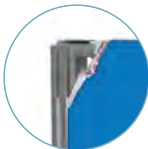
Fastframe™	FF-95X200	954(w) x 2007(h) x 400(d) mm
Fastframe™ (Black back graphic)	G-FF-95X200-BB	950(w) x 2000(h)
Fastframe™ (Polyester stretch graphic)	G-FF-95X200-PS	950(w) x 2000(h)



Portable carry bag



Includes 2 x feet



Silicone Edged
Graphics (SEG)



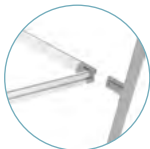
FASTFRAME™950x2400



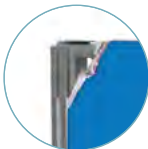
Fastframe™	FF-95X240	954(w) x 2407(h) x 400(d) mm
Fastframe™ (Black back graphic)	G-FF-95X240-BB	950(w) x 2400(h)
Fastframe™ (Polyester stretch graphic)	G-FF-95X240-PS	950(w) x 2400(h)



Portable carry bag



Includes 2 x feet



Silicone Edged
Graphics (SEG)



FASTFRAME™

FASTFRAME™ 950x2500

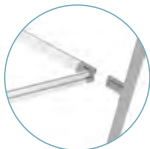


Fastframe™	FF-95X250	954(w) x 2507(h) x 400(d) mm
Fastframe™ (Black back graphic)	G-FF-95X250-BB	950(w) x 2500(h)
Fastframe™ (Polyester stretch graphic)	G-FF-95X250-PS	950(w) x 2500(h)

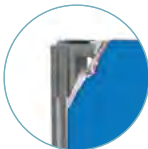
NEW
PRODUCT



Portable carry bag



Includes 2 x feet



Silicone Edged
Graphics (SEG)



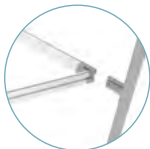
FASTFRAME™ 1000x2000



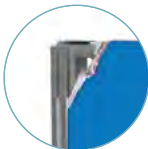
Fastframe™	FF-100X200	1004(w) x 2007(h) x 400(d) mm
Fastframe™ (Black back graphic)	G-FF-100X200-BB	1000(w) x 2000(h)
Fastframe™ (Polyester stretch graphic)	G-FF-100X200-PS	1000(w) x 2000(h)



Portable carry bag



Includes 2 x feet



Silicone Edged
Graphics (SEG)



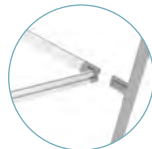
FASTFRAME™ 1000x2400



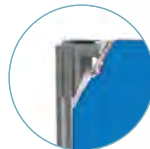
Fastframe™	FF-100X240	Ⓢ 1004(w) x 2407(h) x 400(d) mm
Fastframe™ (Black back graphic)	G-FF-100X240-BB	Ⓢ 1000(w) x 2400(h)
Fastframe™ (Polyester stretch graphic)	G-FF-100X240-PS	Ⓢ 1000(w) x 2400(h)



Portable carry bag



Includes 2 x feet



Silicone Edged
Graphics (SEG)



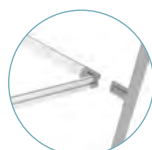
FASTFRAME™ 1000x2500



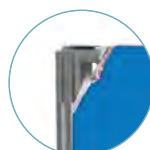
Fastframe™	FF-100X250	Ⓢ 1004(w) x 2507(h) x 400(d) mm
Fastframe™ (Black back graphic)	G-FF-100X250-BB	Ⓢ 1000(w) x 2500(h)
Fastframe™ (Polyester stretch graphic)	G-FF-100X250-PS	Ⓢ 1000(w) x 2500(h)



Portable carry bag



Includes 2 x feet






Silicone Edged
Graphics (SEG)



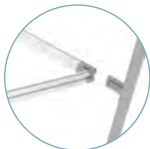
FASTFRAME™1200x2400



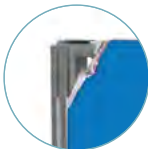
Fastframe™	FF-120X240	 1204(w) x 2407(h) x 400(d) mm
Fastframe™ (Black back graphic)	G-FF-120X240-BB	 1200(w) x 2400(h)
Fastframe™ (Polyester stretch graphic)	G-FF-120X240-PS	 1200(w) x 2400(h)



Portable carry bag



Includes 2 x feet



Silicone Edged
Graphics (SEG)



FASTFRAME™ Feet

Full Foot (Single)

FF-FF	50(w) x 99(h) x 400(d) mm
-------	---------------------------



Middle Full Foot (Single)

FF-MFF	50(w) x 89(h) x 400(d) mm
--------	---------------------------



Half Middle Foot (Single)

FF-HFM	51(w) x 89(h) x 220(d) mm
--------	---------------------------



Small Middle Foot (Single)

FF-SMF	40(w) x 89(h) x 97(d) mm
--------	--------------------------



Side Half Feet (Pair)

FF-SHF	50(w) x 98(h) x 220(d) mm
--------	---------------------------



FASTFRAME™ Connectors

45° Connector Kit - Top & Bottom

FF-45C	45(w) x 108(h) x 95(d) mm
--------	---------------------------



90° Connector Kit - Top & Bottom

FF-90C	Top	81.5(w) x 60.7(h) x 81.5(d) mm
	Bottom	81.5(w) x 60.7(h) x 81.5(d) mm



FASTFRAME™ Connectors

90° Middle Connector Kit - Pair

FF-90MIC	⊗, 40(w) x 55(h) x 40(d) mm
----------	-----------------------------



90° Left Inside Connector Kit - Pair

FF-90LIC	⊗, 40(w) x 55(h) x 40(d) mm
----------	-----------------------------



90° Right Inside Connector Kit - Pair

FF-90RIC	⊗, 55(w) x 85(h) x 55(d) mm
----------	-----------------------------



Arch Connector Kit - 4 Brackets

FF-ACC	⊗, 90(w) x 105(h) x 60(d) mm
--------	------------------------------



Cross Connector Kit - Top & Bottom

FF-CC	⊗, Top	142(w) x 94.3(h) x 100.7(d) mm
	⊗, Bottom	141.3(w) x 90(h) x 100.4(d) mm



T-Shape Connector Kit - Top & Bottom

FF-TC	⊗, Top	100.5(w) x 91(h) x 94.7(d) mm
	⊗, Bottom	100(w) x 91.1(h) x 97.4(d) mm



Y Shape Connector Kit - Top & Bottom

FF-YC	⊗, Top	107(w) x 97.3(h) x 107(d) mm
	⊗, Bottom	107(w) x 107(h) x 94.3(d) mm



FASTFRAME™ Connectors

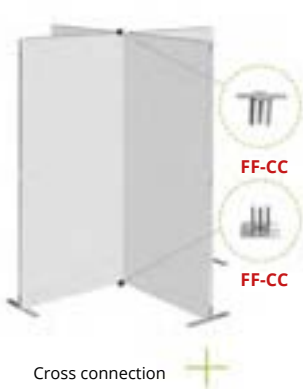
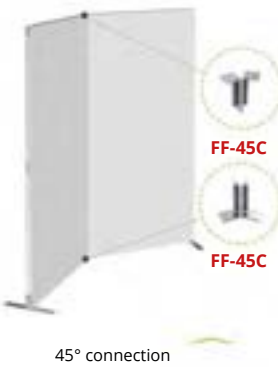
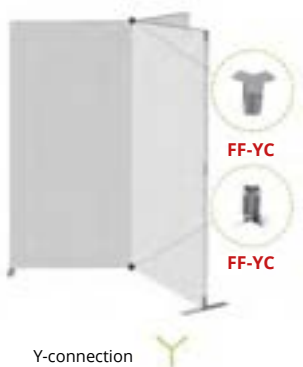
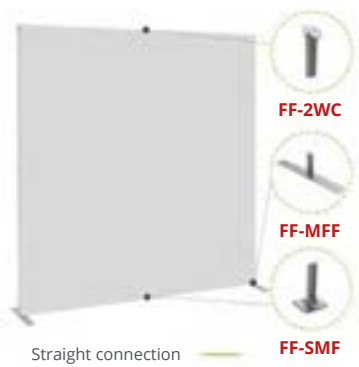
2-Way Connector - Single

FF-2WC	⊙, 41(w) x 82(h) x 21(d) mm
--------	-----------------------------



4-Way Connector - Single

FF-4WC	⊙, 150(w) x 12.12(h) x 19.6(d) mm
--------	-----------------------------------



Arch Brace Kit

FF-ABK	171(w) x 7(h) x 42(d) mm
--------	--------------------------

*for use with frames over 1000mm



Screen Mount Kit

FF-SMK	up to 10kg
--------	------------

* Maximum screen weight 10kg
VESA mount 200 x 200, 200 x 400, 300 x 300 and 400x400mm
Screen size from 26"- 65"
Only suitable for 1000mm width frame
Only suitable for use on an arch



Shelf Kit

FF-SK	1020(w) x 30(h) x 252(d) mm
-------	-----------------------------

* Only suitable for 1000mm width frames
Maximum weight 5kg



Door Mount Bracket Kit

FF-DMB-1000

Add a handy storage unit to your Fastframe™ display stand with the Door Mount Bracket Kit. It contains all the required connectors to transform 1000mm width frames into a concealed storage area*

*Frames sold separately



Wheeled Bag

FF-WB	1415(w) x 390(h) x 244(d) mm
-------	------------------------------

* Holds up to x 4, 1200 x 2400 Fastframe with graphics



FASTFRAME™ Stand 6m²



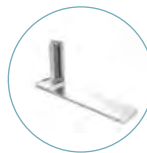
Quick and easy to assemble and disassemble. Add energy saving LED lighting to illuminate the back walls for more standout.

Material	Aluminium and ABS/nylon
Profile width	40mm
Profile colour	Silver
Assembly	Pre-assembled folding
Graphic area	Single or double-sided
Graphic attachment	Silicone Edged Graphics (SEG)

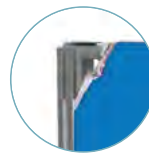
Fastframe™ 950 X 2400 (With Feet)	7	FF-95X240
90° Connector Kit - Top & Bottom	2	FF-90C
Side Half Feet (Pair)	1	FF-SHF
2 - Way connector	4	FF-2WC
Small Middle Foot	4	FF-SMF
LED Exhibition Light (X2 + 1 Driver)	2	LED-EXHIB-ARM-BDLK
Fastframe™ Counter	1	FF-COUNTER-BLK



Portable carry bag

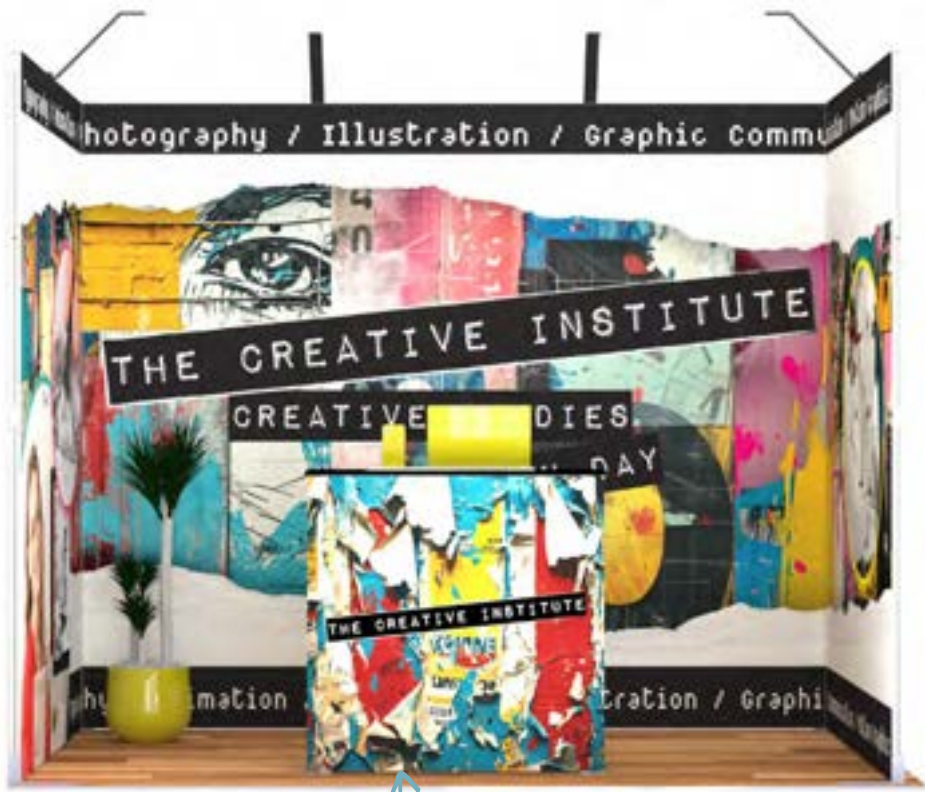


Feet can be added if required



Silicone Edged Graphics (SEG)

Graphics available in black back or polyester stretch, seamless graphics are available



FASTFRAME™ Counter

FASTFRAME™ Stand 9m²

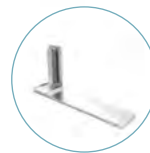


Material	Aluminium and ABS/nylon
Profile width	40mm
Profile colour	Silver
Assembly	Pre-assembled folding
Graphic area	Single or double-sided
Graphic attachment	Silicone Edged Graphics (SEG)

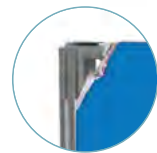
Fastframe™ 950 X 2400 (With Feet)	4	FF-95X240
Fastframe™ 1000 X 2400 (With Feet)	4	FF-100X240
Small Middle Foot	3	FF-SMF
Side Half Feet (Pair)	1	FF-SHF
2 - Way connector	2	FF-2WC
Door Mount Bracket Kit	1	FF-DMB-1000
LED Exhibition Light (X2 + 1 Driver)	2	LED-EXHIB-ARM-BDLK
Fastframe™ Counter	1	FF-COUNTER-BLK



Portable carry bag



Feet can be added if required



Silicone Edged Graphics (SEG)

Graphics available in black back or polyester stretch, seamless graphics are available

Scalable stands go from 9m² to 15m²
Add FF-90C



FASTFRAME™ Counter



FASTFRAME™ Stand 12m²

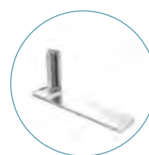


Material	Aluminium and ABS/nylon
Profile width	40mm
Profile colour	Silver
Assembly	Pre-assembled folding
Graphic area	Single or double-sided
Graphic attachment	Silicone Edged Graphics (SEG)

Fastframe™ 950 X 2400 (With Feet)	4	FF-95X240
Fastframe™ 1000 X 2400 (With Feet)	6	FF-100X240
Fastframe™ 1000 X 500 (With Feet)	1	FF-100X50
Small Middle Foot	3	FF-SMF
Side Half Feet (Pair)	1	FF-SHF
2 - Way Connector	3	FF-2WC
Full Foot Single	2	FF-FF
Door Mount Bracket Kit	1	FF-DMB-1000
Arch Connector Kit (4 Brackets)	1	FF-ACC
Shelf Kit	1	FF-SK
LED Exhibition Light (X2 + 1 Driver)	2	LED-EXHIB-ARM-BDLK
Fastframe™ Counter (Black)	1	FF-COUNTER-BLK



Portable carry bag



Feet can be added if required



Silicone Edged Graphics (SEG)

Graphics available in black back or polyester stretch, seamless graphics are available



FASTFRAME™ Counter

FASTFRAME™ Stand 15m²

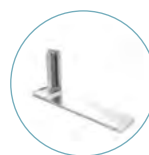


Material	Aluminium and ABS/nylon
Profile width	40mm
Profile colour	Silver
Assembly	Pre-assembled folding
Graphic area	Single or double-sided
Graphic attachment	Silicone Edged Graphics (SEG)

Fastframe™ 950 X 2400 (With Feet)	4	FF-95X240
Fastframe™ 1000 X 2400 (With Feet)	8	FF-100X240
Fastframe™ 1000 X 2000mm (With Feet)	1	FF-100X200
Small Middle Foot	3	FF-SMF
Side Half Feet (Pair)	1	FF-SHF
2 - Way Connector	5	FF-2WC
Arch Connector Kit (4 Brackets)	1	FF-ACC
Arch Brace Kit	1	FF-ABK
Full Foot Single	2	FF-FF
Screen Mount Kit	1	FF-SMK
Door Mount Bracket Kit	1	FF-DMB-1000
LED Exhibition Light (X2 + 1 Driver)	3	LED-EXHIB-ARM-BDLK
Fastframe™ Counter	1	FF-COUNTER-BLK



Portable carry bag



Feet can be added if required



Silicone Edged Graphics (SEG)

Graphics available in black back or polyester stretch, seamless graphics are available



FASTFRAME™ Counter

FASTFRAME™ Stand 18m²

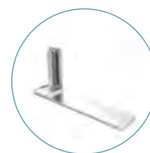


Material	Aluminium and ABS/nylon
Profile width	40mm
Profile colour	Silver
Assembly	Pre-assembled folding
Graphic area	Single or double-sided
Graphic attachment	Silicone Edged Graphics (SEG)

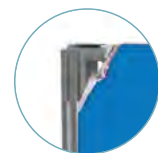
Fastframe™ 950 X 2400 (With Feet)	4	FF-95X240
Fastframe™ 1000 X 2400 (With Feet)	7	FF-100X240
Small Middle Foot	1	FF-SMF
Middle Half Foot	4	FF-HFM
Side Half Feet (Pair)	1	FF-SHF
2 - Way Connector	5	FF-2WC
Door Mount Bracket Kit	1	FF-DMB-1000
LED Exhibition Light (X2 + 1 Driver)	3	LED-EXHIB-ARM-BDLK
Fastframe™ Counter	1	FF-COUNTER-BLK



Portable carry bag



Feet can be added if required



Silicone Edged Graphics (SEG)

Graphics available in black back or polyester stretch, seamless graphics are available



FASTFRAME™ Counter

FASTFRAME™ Stand 24m²

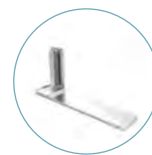


Material	Aluminium and ABS/nylon
Profile width	40mm
Profile colour	Silver
Assembly	Pre-assembled folding
Graphic area	Single or double-sided
Graphic attachment	Silicone Edged Graphics (SEG)

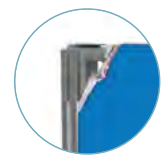
Fastframe™ 950 X 2400 (With Feet)	2	FF-95X240
Fastframe™ 1000 X 2400 (With Feet)	13	FF-100X240
Small Middle Foot	2	FF-SMF
Side Half Feet (Pair)	1	FF-SHF
2 - Way Connector	3	FF-2WC
Door Mount Bracket Kit	1	FF-DMB-1000
Arch Connector Kit (4 Brackets)	1	FF-ACC
Arch Brace Kit	1	FF-ABK
Screen Mount Kit	1	FF-SMK
LED Exhibition Light (X2 + 1 Driver)	3	LED-EXHIB-ARM-BDLK
Fastframe™ Counter	1	FF-COUNTER-BLK



Portable carry bag



Feet can be added if required



Silicone Edged Graphics (SEG)

Graphics available in black back or polyester stretch, seamless graphics are available



FASTFRAME™ Counter





Arena Structures

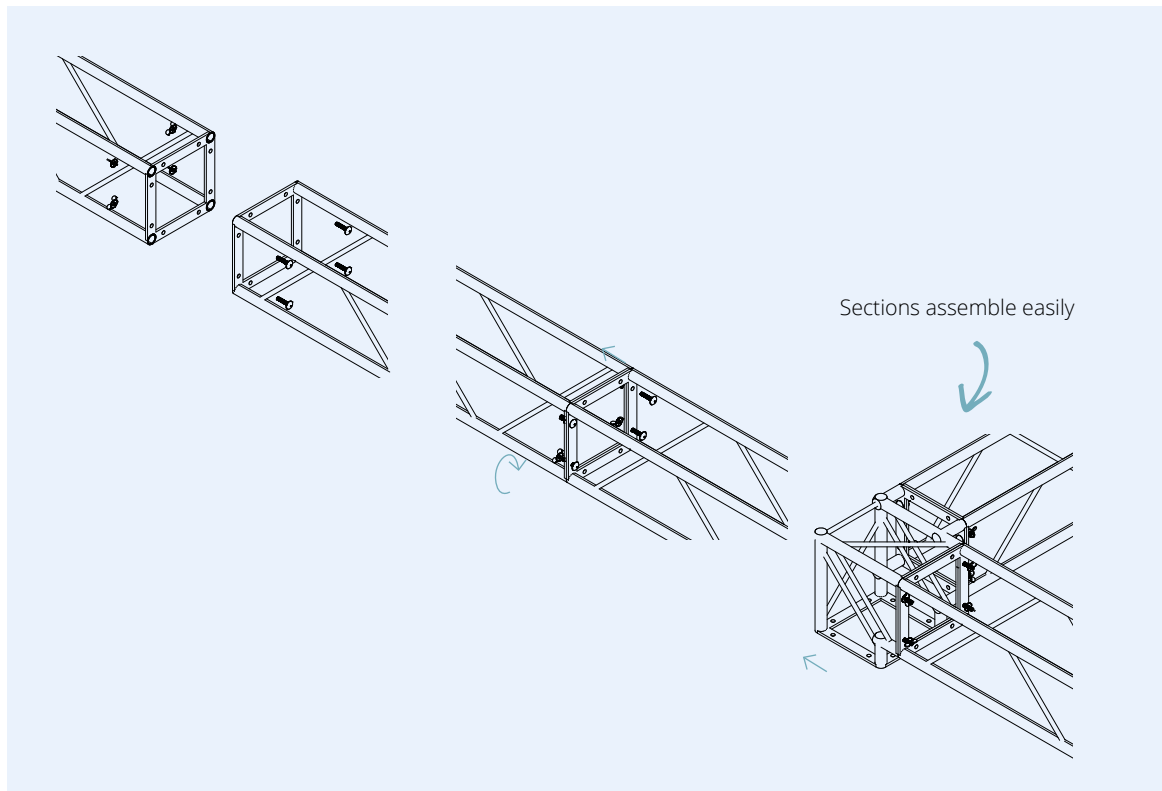
Arena Gantry structures for your stand

These 25mm diameter aluminium tubes have been assembled and welded into sections of various sizes to form the basis of an imposing and solid architecture.

A wide range of sections are available to make this solution compatible with your project requirements. With 13 components in various lengths and designs, you can create the right structure for you, and your chosen mode of transport.

Simple, tool-free assembly

Simple assembly - sections are connected using the supplied bolt and wing-nut fixings, and no tools are required. The double-sided graphics are attached to the gantry using a bungee cord. Create maximum brand visibility using sections up to 6m long without the need for reinforcement.



Arena components

Arena Straight Sections

The Arena Straight Sections are available in a variety of lengths, they are strong but lightweight with a natural silver grey finish. The system is quick and easy to assemble using bolt and wing-nut fixings. This aluminium tubular system is both modular and scalable, where different sections can be assembled and reused according to the needs of each project. The structure can then be dressed with interchangeable UV printed PVC graphics.

UT-S250	Section 250mm
UT-S500	Section 500mm
UT-S750	Section 750mm
UT-S1000	Section 1000mm
UT-S1250	Section 1250mm
UT-S1500	Section 1500mm
UT-S2000	Section 2000mm



Arena Junction Sections

The Arena Junction Sections are available in a variety of configurations including: 3-way T-junction, 4-way corner junction. The choice of sections enables a custom build design for your application to create a modular and scalable system. The structure can then be dressed with interchangeable UV printed PVC graphics.



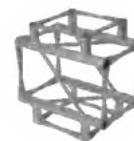
90° angle 2 connections
UT-C21



Corner connection
3 connections
UT-C30



T-junction 3 connections
UT-C35



T-junction 4 connections
UT-C40



4-Way corner connector
UT-C41



Foot 250mm
UT-BS250

Arena Gantry stand designs

Arena Custom Stand 16m²

Material	Aluminium
Colour	Anodised Silver
Graphic area	Single or double-sided
Graphic attachment	Bungee fixings
Graphic option	Vinyl



Arena Custom Stand 36m²

Material	Aluminium
Colour	Anodised Silver
Graphic area	Single or double-sided
Graphic attachment	Bungee fixings
Graphic option	Vinyl



Arena Gantry free-standing design

Arena Custom Structure

Material	Aluminium
Colour	Anodised Silver
Graphic area	Single or double-sided
Graphic attachment	Bungee fixings
Graphic option	Vinyl

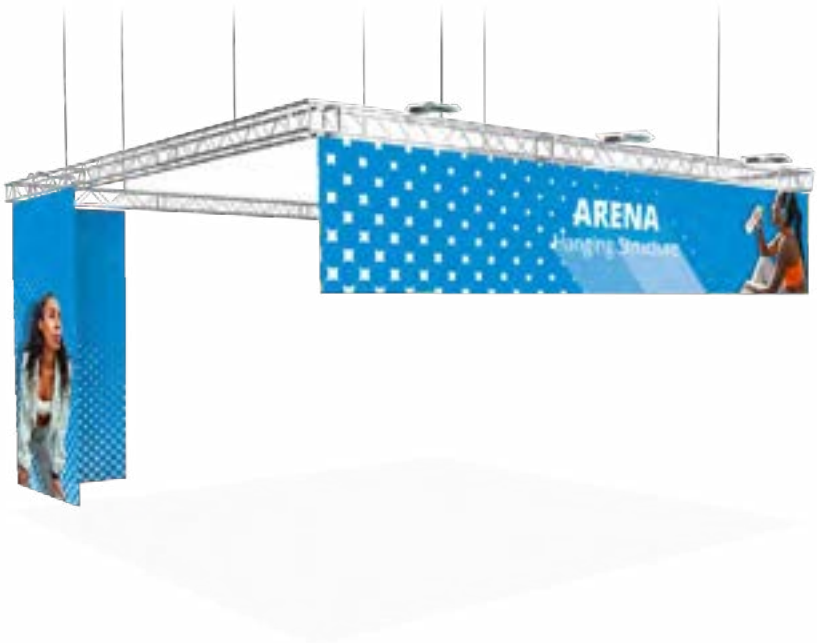


Arena Hanging Structure



The Arena hanging structure is a tubular aluminium stage structure used as a light bridge or suspended sign with 6m sides to draw attention to your brand.

Material	Aluminium
Colour	Anodised Silver
Graphic area	Single or double-sided
Graphic attachment	Bungee fixings
Graphic option	Vinyl



Hanging structures

Formulate suspended signs have been specially designed to allow for easy and safe installation. The lightweight aluminium tubular structure makes them ideal for use on exhibition stands, in shopping arcades or in high traffic areas.

Formulate Square Hanging Structure



Material	Aluminium tubes
Tube	Ø 30 mm
Assembly	Push-fit button
Shape	Square
Graphic area	Double-sided
Graphic attachment	Zippered tension fabric graphic
Application	Suspended pitons included, Slings not included
Availability	Basic range - in stock

Square Formulate 800	FORM-SQU-80	1500(w) x 800(h) x 1500(d) mm
Square Formulate 1000	FORM-SQU-100	3000(w) x 1000(h) x 3000(d) mm
Square Formulate 1500	FORM-SQU-150	4500(w) x 1500(h) x 4500(d) mm



Formulate Circular Hanging Structure



Material	Aluminium tubes
Tube	Ø 30 mm
Assembly	Push-fit button
Shape	Circle
Graphic area	Double-sided
Graphic attachment	Zippered tension fabric graphic
Application	Suspended pitons included, Slings not included
Availability	Basic range - in stock

Circular Formulate 800	FORM-RNG-80	1500(w) x 800(h) x 1500(d) mm
Circular Formulate 1000	FORM-RNG-100	3000(w) x 1000(h) x 3000(d) mm
Circular Formulate 1500	FORM-RNG-150	4500(w) x 1500(h) x 4500(d) mm



Formulate Rectangular Hanging Structure



Material	Aluminium tubes
Tube	Ø 30 mm
Assembly	Push-fit button
Shape	Rectangle
Graphic area	Double-sided
Graphic attachment	Zipped tension fabric graphic
Application	Suspended pitons included, Slings not included
Availability	Made to order



Formulate Rectangle 250	FORM-RTG-M100	Ⓢ 2500(w) x 1000(h) x 1200(d) mm
Formulate Rectangle 350	FORM-RTG-L100	Ⓢ 3500(w) x 1000(h) x 2500(d) mm
Formulate Rectangle 500	FORM-RTG-XL120	Ⓢ 5000(w) x 1200(h) x 2500(d) mm

Formulate Flat Panel Hanging Structure



Material	Aluminium tubes
Tube	Ø 30 mm
Assembly	Push-fit button
Shape	Rectangle
Graphic area	Double-sided
Graphic attachment	Zipped tension fabric graphic
Application	Suspended pitons included, Slings not included
Availability	Made to order



Formulate Panel 250	FORM-FLT-M100	Ⓢ 2500(w) x 1000(h) x 30(d) mm
Formulate Panel 350	FORM-FLT-L100	Ⓢ 3500(w) x 1000(h) x 30(d) mm
Formulate Panel 500	FORM-FLT-XL120	Ⓢ 5000(w) x 1200(h) x 30(d) mm

Display Backwalls create a dramatic backdrop to events, presentations, product demonstrations, pop-up shops or window displays.

Ideal for smaller spaces, or as large static advertising boards in public spaces such as museums, reception areas, public transportation hubs and other large spaces.

Segmented frame walls are fully configurable, professional grade backwalls, where flexibility, ease of storage, reusability, portability and assembly are important. The pop-up display backwalls are constructed from lightweight aluminium scissor mechanisms that are easy to transport, assemble and store, and are ideal for small exhibitions or events as well as static displays. For a simple backdrop, the Pegasus tension walls offer a cost effective, easy solution to meet those needs. Configurable in both height and width, the tension wall is quick to assemble and makes an ideal backdrop to temporary or short-term presentations.





Display Backwalls

Backwalls can be configured in a variety of ways, based on the application, with each offering a different method of construction, illumination and use.

Pop-up backwalls

Impact Pop-up Straight



A great entry level display backwall that is perfect for use at an exhibition, event or for a demonstration backdrop. Frames are available in a variety of widths, and are quick and easy to deploy using the self-locating locking arms. Magnetic tape attaches to the back of the graphic panels enabling them to be attached directly to the mag bars which are mounted to the frames.

Material	Aluminium structure, plastic connectors	
Assembly	Magnetic connectors	
Shape	Straight	
Graphic area	Single-sided (with or without D-ends) / double-sided (optional)	
Graphic attachment	Mag bars, hangers and kickers	
Application	Free-standing	

3x2 Straight	IMP-3X2S	Ⓢ 1970(w) x 2225(h) x 306(d) mm
3x3 Straight	IMP-3X3S	Ⓢ 2700(w) x 2225(h) x 306(d) mm
3x4 Straight	IMP-3X4S	Ⓢ 3435(w) x 2225(h) x 306(d) mm



Magnetic bars



Magnetic Locking arms



Hook-over graphic attachment

Impact Pop-up Straight Bundle



Impact Pop-up straight bundles are a great entry level display backwall kit that contains everything you will need to get you up and running at a show, event or demonstration - they even come with a counter and lighting!

Material	Aluminium structure, plastic connectors	
Assembly	Magnetic connectors	
Shape	Straight	
Graphic area	Single-sided (with or without D-ends) / double-sided (optional)	
Graphic attachment	Mag bars, hangers and kickers	
Application	Free-standing	

3x2 Straight	99-XX-106	Ⓢ 1970(w) x 2225(h) x 306(d) mm
3x3 Straight	99-XX-107	Ⓢ 2700(w) x 2225(h) x 306(d) mm
3x4 Straight	99-XX-108	Ⓢ 3435(w) x 2225(h) x 306(d) mm



Impact Pop-up Bundle

Impact Pop-up Kit						
						
Carry bag	Straight or curved frame system	Hangers, kickers and mag bars	1x Roll of self-adhesive magnetic tape (EM301)	Zenith transport and counter base case	Thermoformed table top in beech	2x PS950-1000-LED-BDLK lights

Impact Pop-up Curved



A great entry level display backwall that is perfect for use at an exhibition, event or for a demonstration backdrop. Frames are available in a variety of widths, and are quick and easy to deploy using the self-locating locking arms. Magnetic tape attaches to the back of the graphic panels enabling them to be attached directly to the mag bars which are mounted to the frames.

Material	Aluminium structure, plastic connectors
Assembly	Magnetic connectors
Shape	Curved
Graphic area	Single-sided (with or without D-ends) / double-sided (optional)
Graphic attachment	Mag bars, hangers and kickers
Application	Free-standing

3x2 Curved	IMP-3X2C	⌀ 1930(w) x 2225(h) x 485(d) mm
3x3 Curved	IMP-3X3C	⌀ 2540(w) x 2225(h) x 685(d) mm
3x4 Curved	IMP-3X4C	⌀ 3070(w) x 2225(h) x 960(d) mm



Magnetic bars



Magnetic Locking arms



Hook-over graphic attachment

Impact Pop-up Curved Bundle



Impact Pop-up curved bundles are a great entry level display backwall kit that contains everything you will need to get you up and running at a show, event or demonstration - they even come with a counter and lighting!

Material	Aluminium structure, plastic connectors
Assembly	Magnetic connectors
Shape	Curved
Graphic area	Single-sided (with or without D-ends) / double-sided (optional)
Graphic attachment	Mag bars, hangers and kickers
Application	Free-standing

3x2 Curved	99-XX-110	⌀ 1930(w) x 2225(h) x 485(d) mm
3x3 Curved	99-XX-071	⌀ 2540(w) x 2225(h) x 685(d) mm
3x4 Curved	99-XX-070	⌀ 3070(w) x 2225(h) x 960(d) mm



Impact Pop-up Bundle

Impact Pop-up Kit							
							
Carry bag	Straight or curved frame system	Hangers, kickers and mag bars	1x Roll of self-adhesive magnetic tape (EM301)	Zenith transport and counter base case	Thermoformed table top in beech	2x PS950-1000-LED-BDLK lights	

Quick+ Straight Kit



The premium Quick+ Straight display backwall is a full magnetic system that can be used single or double-sided. Use with optional interchangeable, vibrant UV printed PVC graphics. Deploys tool-free in seconds straight out of the supplied protective padded bag giving you a brilliant backwall display for your event or shell scheme. Quick+ displays are also available in a curved display and come in 3 different sizes.

Material	Aluminium structure, plastic connectors	
Assembly	Magnetic connectors	
Shape	Straight	
Graphic area	Single-sided (with or without D-ends) / double-sided (optional)	
Graphic attachment	Mag bars, hangers and kickers	
Application	Free-standing	



3x2 Straight	WH222-S-CA	⊗ 1970(w) x 2225(h) x 306(d) mm
3x3 Straight	WH223-S-CA	⊗ 2700(w) x 2225(h) x 306(d) mm
3x4 Straight	WH224-S-CA	⊗ 3435(w) x 2225(h) x 306(d) mm



Square end magnetic bars



Magnetic locking arms



Magnetic hanger

Quick+ Curved Kit



The premium Quick+ Curved display backwall is a full magnetic system that can be used single or double-sided. Use with optional interchangeable, vibrant UV printed PVC graphics. Deploys tool-free in seconds straight out of the supplied protective padded bag giving you a brilliant backwall display for your event or shell scheme. Quick+ displays are also available in a straight display and come in 3 different sizes.

Material	Aluminium structure, plastic connectors	
Assembly	Magnetic connectors	
Shape	Curved	
Graphic area	Single-sided (with or without D-ends) / double-sided (optional)	
Graphic attachment	Mag bars, hangers and kickers	
Application	Free-standing	

3x2 Curved	WH222-C-CA	⊗ 1930(w) x 2225(h) x 485(d) mm
3x3 Curved	WH223-C-CA	⊗ 2540(w) x 2225(h) x 685(d) mm
3x4 Curved	WH224-C-CA	⊗ 3070(w) x 2225(h) x 960(d) mm



Square end magnetic bars



Magnetic locking arms



Magnetic hanger



Quick+ Straight Bundle



The Premium Quick+ Straight Display Bundle includes the full magnetic display backwall kit which can be used single or double-sided, the unique Zenith transit case which converts to a counter and two PS950-1000 LED lights. Use with optional interchangeable, vibrant UV printed PVC graphics. Deploys tool-free in seconds, giving you a brilliant backwall display for your event or shell scheme. Quick+ displays are also available in a curved display bundle and come in 3 different sizes.

Material	Aluminium structure, plastic connectors
Assembly	Magnetic connectors
Shape	Straight
Graphic area	Single-sided (with or without D-ends) / double-sided (optional)
Graphic attachment	Mag bars, hangers and kickers
Application	Free-standing

3x2 Straight	99-XX-101Q	⊖ 1970(w) x 2225(h) x 306(d) mm
3x3 Straight	99-XX-102Q	⊖ 2700(w) x 2225(h) x 306(d) mm
3x4 Straight	99-XX-103Q	⊖ 3435(w) x 2225(h) x 306(d) mm



Quick+ Bundle

Quick+ Kit



Padded nylon carry bag



Quick+ Structure Straight / Curved



Hangers, kickers and mag bars



1x Roll of self-adhesive magnetic tape (EM301)



Zenith transport and counter base case



Thermoformed table top in beech



2x PS950-1000-LED-BDLK lights

Quick+ Curved Bundle



The Premium Quick+ Curved Display Bundle includes the full magnetic display backwall kit which can be used single or double-sided, the unique Zenith transit case which converts to a counter and two PS950-1000 LED lights. Use with optional interchangeable, vibrant UV printed PVC graphics. Deploys tool-free in seconds, giving you a brilliant backwall display for your event or shell scheme. Quick+ displays are also available in a straight display bundle and come in 3 different sizes.

Material	Aluminium structure, plastic connectors
Assembly	Magnetic connectors
Shape	Curved
Graphic area	Single-sided (with or without D-ends) / double-sided (optional)
Graphic attachment	Mag bars, hangers and kickers
Application	Free-standing

3x2 Curved	99-XX-016Q	⊖ 1930(w) x 2225(h) x 485(d) mm
3x3 Curved	99-XX-017Q	⊖ 2540(w) x 2225(h) x 685(d) mm
3x4 Curved	99-XX-020Q	⊖ 3070(w) x 2225(h) x 960(d) mm



Quick+ Bundle

Quick+ Kit



Padded nylon carry bag



Quick+ Structure Straight / Curved



Hangers, kickers and mag bars



1x Roll of self-adhesive magnetic tape (EM301)



Zenith transport and counter base case



Thermoformed table top in beech



2x PS950-1000-LED-BDLK lights

Hop-up Impact Straight



Impact Hop-ups are simple lightweight interlocking frame structures that deploy in minutes. Complete with tension-fit graphics that can stay on even when packed away.

Material	Aluminium structure, plastic connectors
Assembly	Lock together with clips
Shape	Straight
Graphic area	Single-sided (with or without returns) or double-sided (optional)
Graphic attachment	Hook and loop
Application	Free-standing

3x2 quads	HUI3X2	Ⓢ 1525(w) x 2260(h) x 295(d) mm
3x3 quads	HUI3X3	Ⓢ 2260(w) x 2260(h) x 295(d) mm
3x4 quads	HUI3X4	Ⓢ 2995(w) x 2260(h) x 295(d) mm
3x5 quads	HUI3X5	Ⓢ 3730(w) x 2260(h) x 295(d) mm

Graphic stays on structure once packed down



Graphics attach with hook and loop fastener



Plastic connectors



Easy to transport



Carry bag

Ancillaries :

Stabilising feet (pair)	ES508	Ⓢ N/A
-------------------------	-------	-------

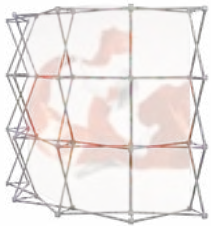
Hop-up Impact Curved



Impact Hop-ups are simple lightweight interlocking frame structures that deploy in minutes. Complete with tension-fit graphics that can stay on even when packed away.

Material	Aluminium structure, plastic connectors
Assembly	Lock together with clips
Shape	Curved
Graphic area	Single-sided (with or without returns)
Graphic attachment	Hook and loop
Application	Free-standing

3x3 quads	HOP-2-3X3-C	Ⓢ 2310(w) x 2270(h) x 570(d) mm
3x4 quads	HOP-2-3x4-C	Ⓢ 2950(w) x 2260(h) x 810(d) mm



Easy to transport



Plastic connectors



Graphics attach with hook and loop fastener

FASTFRAME™ Backwall Kit - 2 Metre



Fastframe™ Backwall Kit	FF-100X200 x2 FF-MFF x1	Ⓢ 2004(w) x 2007(h) x 400(d) mm
-------------------------	-------------------------	---------------------------------

Fastframe™ Backwall Kit



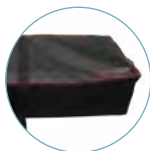
Portable carry bag



2 frames
1000 x 2000mm
includes
Standard feet



FF-MFF



Optional wheeled bag



FASTFRAME™ Pop-up Kit



Fastframe™ Pop-up Kit	x3 FF-100X200 x2 FF-45C	Ⓢ 2690(w) x 2007(h) x 940(d) mm
-----------------------	-------------------------	---------------------------------

Dimensions based on configuration shown

Fastframe™ Pop-up Kit



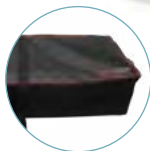
Portable carry bag



3 frames
1000 x 2000mm
includes
Standard feet



2
45° connector
kit



Optional wheeled bag



FASTFRAME™ Backwall Kit - 3 Metre



Fastframe™ Backwall Kit	x3 FF-100X200, x2 FF-MFF	3004(w) x 2007(h) x 400(d) mm
-------------------------	--------------------------	-------------------------------

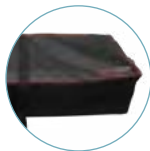
Fastframe™ Backwall Kit



Portable carry bag



3 frames
1000 x 2000mm
includes
standard feet



Optional wheeled bag



Fabric tube walls

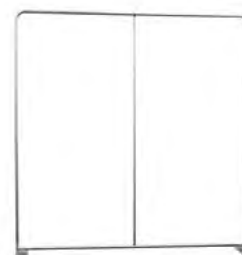
Formulate Straight



Formulate Straight backwalls are constructed of lightweight 30mm diameter push-fit aluminium tubing for tool-free simple deployment. Complete with optional double-sided dye-sublimated tension-fit fabric graphics that zip at the base to perfectly contour the shaped aluminium structure and maximize your brand message. Formulate displays offer a variety of great shapes with clean lines, ideal for creating picture backwalls or defining areas in rooms by screening or zoning.

Material	Aluminium tubing
Tube	Ø 30 mm
Assembly	Push-fit / Allen key
Shape	Straight
Graphic area	Double-sided
Graphic attachment	Zippered tension fabric graphic
Application	Free-standing with feet (included)

2000 mm	FORM-STR-20	⊗ 2000(w) x 2380(h) x 400(d) mm
2400 mm	FORM-STR-24	⊗ 2350(w) x 2380(h) x 400(d) mm
3000 mm	FORM-STR-30	⊗ 2950(w) x 2380(h) x 400(d) mm
4000 mm	FORM-STR-40	⊗ 3950(w) x 2380(h) x 400(d) mm
5000 mm	FORM-STR-50	⊗ 4950(w) x 2380(h) x 400(d) mm
6000 mm	FORM-STR-60	⊗ 5950(w) x 2380(h) x 400(d) mm



Bungee tubes



Numbered system for easy assembly



Gloves included

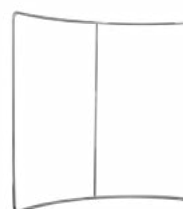
Formulate Horizontal Curve



Formulate Horizontal Curve displays are an eye-catching shape, constructed of lightweight 30mm diameter push-fit aluminium tubing, combined with a zippered tension-fit graphics for tool-free impressive backwalls. Formulate displays offer a variety of great shapes with clean lines, ideal for creating picture backwalls or defining areas in rooms by screening or zoning. The optional double-sided tension fabric graphics perfectly contour the shaped aluminium structures and maximise your brand message.

Material	Aluminium tubes
Tube	Ø 30 mm
Assembly	Push-fit button
Shape	Horizontal curve
Graphic area	Double-sided
Graphic attachment	Zippered tension fabric graphic
Application	Free-standing

2400 mm	FORM-CUR-24	⊗ 2350(w) x 2380(h) x 500(d) mm
3000 mm	FORM-CUR-30	⊗ 2950(w) x 2380(h) x 500(d) mm
6000 mm	FORM-CUR-60	⊗ 5910(w) x 2380(h) x 900(d) mm
Formulate side feet (pair)		
	FORM-SFP	⊗ 430(w) x 100(h) x 320(d) mm



Optional side feet
FORM-SFP (Pair)



Zippered tension fabric graphic



Bungee tubes



Numbered system for easy assembly



Possibility to add LED Spotlights and Ancillaries

Tension walls

Horizon



Horizon is the ideal solution for large scale promotions. Use single-sided or double-sided to maximise the impact for brand displays. Securely weighted by twin water filled bases for total stability.

Material	Aluminium, moulded grey plastic base
Pole	Adjustable height (1500-2400 mm)
Graphic area	Single or double-sided
Graphic attachment	Eyelets
Base capacity	28 litres per tank
Wind resistance	Up to 12 mph / 19 km/h

Horizon	UB203	⊗ 2500(w) x 1500/3000(h) x 800(d) mm
---------	-------	--------------------------------------



Telescopic pole for adjustable height



Graphic attaches with eyelets

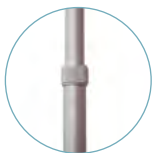
Pegasus



The large-format Pegasus tension banner has telescopic poles and can adjust to 2.5m wide and tall - perfect for large format imagery and brand messaging. Tool-free assembly for quick and simple deployment, Pegasus packs down into a supplied carry bag, and is suitable for vinyl or fabric graphics with pole pockets.

Material	Aluminium
Assembly	Telescopic poles / screws
Shape	Straight
Graphic area	Single or double-sided
Graphic attachment	Pole pocket
Application	Free-standing with feet (included)

Pegasus	UB165-S	⊗ 1429/2540(w) x 1000/2515(h) x 442(d) mm
---------	---------	---



Telescopic poles



Poles slide into graphic pole pocket



Quick and easy installation



Pegasus 3m



The most compact 3m wide video wall! Ideal for large format photo calls for group meetings, political events or product launches.

Material	Aluminium
Assembly	Telescopic twist-lock poles
Shape	Straight
Graphic area	Single sided
Graphic attachment	Pole pocket
Application	Free-standing with feet (included)

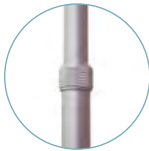
Pegasus 3 m	UB167-S	1845/3180(w) x 1835/2610(h) x 440(d) mm
-------------	---------	---



from 1845 to 3180 mm



Quick and easy installation



Telescopic poles



Portable Display Banners are ideal for a temporary but stable communications tool.

Our unique range of Display Banners are highly portable, quick to deploy and suitable for a broad range of applications. Choose from the economy range through to premium options for use indoors or select specifically designed solutions for outdoor applications.

Alternatively the fabric systems are a premium display solution, featuring aluminium tubing, with double-sided high-quality dye sublimated fabric graphics. Easy to deploy with tool-free assembly.





Display Banners

Affordable by nature, the roller banner range delivers a convenient, tool-free solution, with retractable graphics that deploy in seconds. Choose from a range of indoor or outdoor designs that best suits your application, with single or double-sided graphic options.

Tension banners are constructed of lightweight materials and offer the best value for money.

Tension textile systems

Formulate Monolith



Monolith; the gentle giant, with weighted base for high traffic areas and practical, changeable fabric graphics for multiple brand messaging. This tall double-sided display banner comes in a variety of widths, from 600mm up to 1500mm, and is trusted for stability and easy deployment.

Material	Aluminium tubes, steel base
Tube	Ø 30 mm
Assembly	Push-fit button, Allen key
Graphic area	Double-sided
Graphic attachment	Zippered tension fabric graphic
Application	Free-standing with metal base (included)
Transport	Padded with compartments

600 mm	FORM-MON-600	Ⓢ 600(w) x 2380(h) x 300(d) mm
900 mm	FORM-MON-900	Ⓢ 900(w) x 2380(h) x 300(d) mm
1200 mm	FORM-MON-1200	Ⓢ 1200(w) x 2380(h) x 300(d) mm
1500 mm	FORM-MON-1500	Ⓢ 1500(w) x 2380(h) x 300(d) mm



Hinged metal base (from sizes 900mm wide upward)



Bungee tubes



Formulate Monolith Eco



The Formulate Monolith Eco is an ideal alternative to a roller banner as it provides a cost effective option for the budget conscious whilst delivering an uninterrupted double-sided stretch fabric display. It comes with powder coated steel feet for increased stability that connect to the aluminium tubular frame. The tension graphic hugs the frame and is zipped at the base to hold it in place.

Material	Aluminium tubes, powder coated steel feet
Tube	25mm
Assembly	Push-fit, tool-free
Graphic area	Single or double-sided
Graphic attachment	Tension fabric graphic
Application	Free-standing with feet (included)
Transport	Simple carry bag

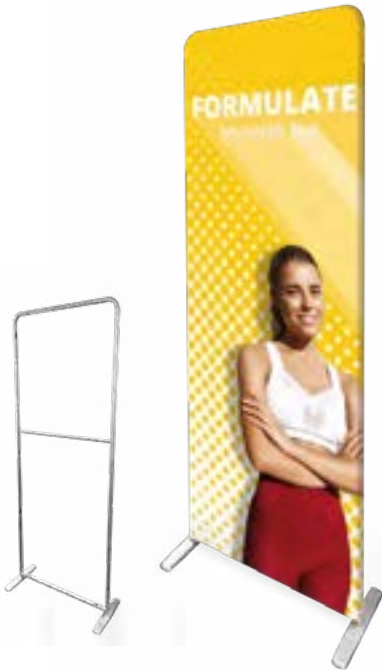
800 mm	FORM-MON-ECO-800	Ⓢ 800(w) x 2009(h) x 378(d) mm
1000 mm	FORM-MON-ECO-1000	Ⓢ 1000(w) x 2009(h) x 378(d) mm



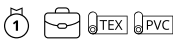
Bungee tubes



Numbered system on tubes for easy assembly



Vector Media



Vector Media is a versatile display which accepts a variety of changeable media substrates; from SEG stretch fabric to rollable PVC. Each side of the frame has a channel for SEG fabrics, alternatively you can also use PVC with magnetic tape that magnetise to the inner frame profile.

Material	Aluminium
Profile width	35 mm
Profile Colour	Silver
Assembly	Tool-free
Graphic area	Single or double-sided
Graphic attachment	For textile graphics: 3 mm SEG For PVC graphics: magnetic tape (included)
Application	Free-standing solid foot

Vector Media	VF-MEDIA-16X06	600(w) x 1610(h) x 280(d) mm
--------------	----------------	------------------------------

PVC or fabric graphic, the choice is yours!



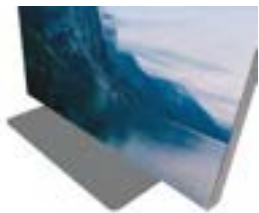
600 x1600 mm



Silicone Edged Graphics (SEG)



PVC graphic with magnetic tape



600mm



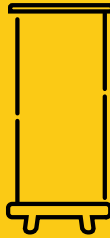
Wasp
Beijing Lite
Blizzard

800mm



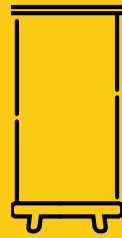
Wasp
Mantis
Mosquito
Grasshopper
Orient+
Barracuda
Beijing Lite
Blizzard

850mm



Wasp
Mantis
Mosquito
Grasshopper
Dragonfly 2
Orient+
Merlin
Delta Lite
Thunder 2

950mm



Fastframe™

1000mm



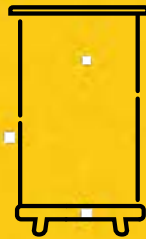
Wasp
Mantis
Mosquito
Dragonfly 2
Orient+
Barracuda
Fastframe™

1200mm



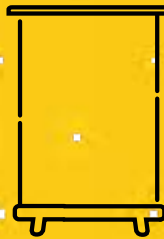
Orient+
Mosquito
Barracuda
Fastframe™

1500mm



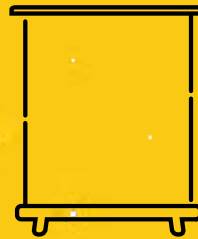
Mosquito
Orient+
Barracuda

2000mm



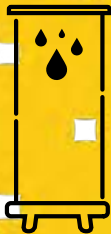
Orient+
Mosquito
Barracuda

2400mm



Barracuda

Outdoor



Thunder 2
Blizzard

Table Top



Breeze A4
Breeze A3



Roller banners (economy)

Wasp



The Wasp roller banner is an entry level product, ideal for short-term events or displays, where cost is a primary consideration. Despite its affordable price, Wasp is made to exacting quality standards and carries a full manufacturer's warranty, so you can be confident it will perform as expected.

Material	Aluminium, plastic end caps on rail and feet tips
Rail	Snap rail
Pole	Aluminium three-part bungee pole
Leader	Self-adhesive
Graphic area	Single-sided
Feet	Twin, twist-out feet
Transport	Simple nylon bag

600 mm	UB204-600-05	⊗ 615(w) x 1710/2080(h) x 320(d) mm
800 mm	UB204-800-03	⊗ 815(w) x 2080(h) x 320(d) mm
850 mm	UB204-850-03	⊗ 865(w) x 2080(h) x 320(d) mm
1000 mm	UB204-1000-03	⊗ 1015(w) x 2080(h) x 320(d) mm



Pole top



Pole bracket



Carry bag



Mantis



The Mantis roller banner is suitable for budget conscious users, who need a cost-effective roller banner with a little more durability for busier areas. With a weighted base, the unit provides enhanced stability over the unweighted banners in the range. Despite its economical price, Mantis is made to exacting quality standards and carries a full manufacturer's warranty, so you can be confident it will perform as expected.

Material	Aluminium, plastic end caps on rail
Rail	Snap
Pole	Bungee
Leader	Self-adhesive
Graphic area	Single-sided
Feet	Twin, twist-out feet
Transport	Padded nylon bag with side opening

800 mm	UB216-800-01	⊗ 818(w) x 2085(h) x 280(d) mm
850 mm	UB216-850-01	⊗ 868(w) x 2085(h) x 280(d) mm
1000 mm	UB216-1000-01	⊗ 1018(w) x 2085(h) x 280(d) mm



Pole top



Rigidising bracket in base for increased strength and longevity of banner



Mosquito



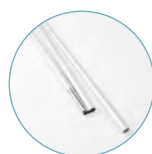
The Mosquito roller banner is an industry standard workhorse. This roller banner offers a blend of affordability, durability and robustness that is often copied, but never equalled. It is constructed from more robust componentry, allowing it to perform reliably in high traffic applications, or where there are likely to be repeated deployments of the roller banner.

Material	Aluminium and plastic
Rail	Snap rail
Pole	Aluminium three-part bungee pole
Leader	Self-adhesive
Graphic area	Single-sided
Feet	Twin, twist-out feet
Transport	Nylon bag with inner protection (double skin)

800 mm	UB197	860(w) x 2105(h) x 285(d) mm
850 mm	UB196	910(w) x 2105(h) x 285(d) mm
1000 mm	UB197-1000	1060(w) x 2105(h) x 285(d) mm
1200 mm	UB197-1200	1260(w) x 2105(h) x 285(d) mm
1500 mm	UB197-1500	1560(w) x 2105(h) x 285(d) mm
2000 mm	UB197-2000	2060(w) x 2105(h) x 285(d) mm



Nylon bag with padded inner protection



Three-part bungee pole



Rigidising bracket in base for increased strength and longevity of banner



Grasshopper



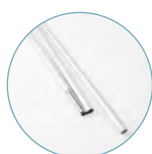
The Grasshopper roller banner is an industry standard workhorse. A popular, classic-style lightweight economy banner with twin twist-out feet for stability. This roller banner offers a blend of affordability, durability and robustness.

Material	Aluminium and plastic
Rail	Adhesive Rail
Pole	Aluminium three-part bungee pole
Leader	Self-adhesive
Graphic area	Single-sided
Feet	Twin, twist-out feet
Transport	Nylon bag with inner protection (double skin)

800 mm	UB191	860(w) x 2105(h) x 285(d) mm
850 mm	UB193	910(w) x 2105(h) x 285(d) mm



Self-adhesive rail



Three-part bungee pole



Rigidising bracket in base for increased strength and longevity of banner



Roller banners (standard)

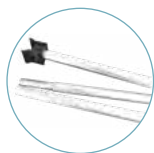
Dragonfly 2



Economical and cost-effective double-sided roller banner with pole storage in base. Comes with padded nylon bag for ease of transportation.

Material	Aluminium, plastic end caps on rail
Rail	Snap rail with end caps
Pole	Aluminium three-part bungee pole
Leader	Self-adhesive
Graphic area	Double-sided
Feet	Twin, twist-out feet
Transport	Padded nylon bag

850 mm	UB199-850-01	⊗ 890(w) x 2105(h) x 395(d) mm
1000 mm	UB199-1000-01	⊗ 1040(w) x 2105(h) x 395(d) mm



Three-part bungee pole



Nylon padded carry bag included

Double-sided



Orient +



The Orient + is a trusted market leading roller banner that delivers stability whilst still being cost-effective. With its front-loading graphic that pulls up from the front of the base, the banner design ensures your brand message has maximum visibility from floor to top rail. It comes with our manufacturer's quality warranty, giving peace of mind.

Material	Aluminium and plastic
Rail	Patented Dual action self-adhesive and snap rail
Pole	Hybrid adjustable height telescopic pole
Leader	Self-adhesive or Hook and Loop
Graphic area	Single-sided
Feet	Adjustable
Transport	Padded nylon bag with side opening and foam reinforced ends

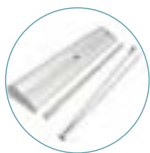
800 mm	WH353-800-003	⊗ 840(w) x 1595/2220(h) x 185(d) mm
850 mm	WH353-850-003	⊗ 890(w) x 1595/2220(h) x 185(d) mm
1000 mm	WH353-1000-003	⊗ 1040(w) x 1595/2220(h) x 185(d) mm
1200 mm	WH353-1200-003	⊗ 1240(w) x 1595/2220(h) x 185(d) mm
1500 mm	WH353-1500-003	⊗ 1540(w) x 1595/2220(h) x 185(d) mm
2000 mm	WH353-2000-003	⊗ 2040(w) x 1595/2220(h) x 185(d) mm



Hybrid telescopic pole



Pole top



Banner components



Delta Lite



The Delta Lite roller banner is highly stylish and has great stability thanks to the wide footprint aluminium base. This elegant banner has great design details including the chrome finished end covers. With adjustable levelling feet and telescopic pole, Delta Lite is excellent value for money. It comes with our manufacturer's quality warranty, giving you peace of mind that it will perform every time.

Material	Aluminium, chrome base end covers
Rail	Snap rail with end caps
Pole	Hybrid adjustable height telescopic pole
Leader	Self-adhesive
Graphic area	Single-sided
Feet	Adjustable
Transport	Padded nylon bag

850 mm	UB205-850-004	903(w) x 1625/2224(h) x 203(d) mm
--------	---------------	-----------------------------------



Snap rail



Hybrid telescopic pole



Thunder 2



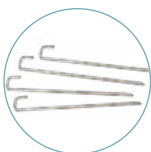
The Thunder 2 double-sided retractable roller banner is ideal for outdoor use as it is strong and durable yet very easy to assemble and transport. Standing 2m high, Thunder 2 will display your message on both sides for maximum viewing impact.

Material	Plastic, aluminium and steel
Pole	Three part bungee pole
Graphic area	Double-sided
Graphic attachment	Self-adhesive leader / top snap rail
Ground fixing	4 pegs (included)
Wind resistance	Up to 7 mph / 11 km/h (unpegged) up to 24 mph / 39 km/h (if pegged)
Transport	Padded bag

Thunder 2	UB185-850-01	884(w) x 2100(h) x 740(d) mm
-----------	--------------	------------------------------



Three-part bungee pole



Ground pegs

Use outdoors



Roller banners (premium)

Merlin



Merlin is a sleek and elegant premium roller banner with an interchangeable graphic cassette which extends the life of the banner as graphics are quick and easy to change. The graphic cartridge is housed independently from the main base unit so it is simple to remove and replace with new graphics and old graphics can also be reused, just by swapping the cassette. A great value-for-money solution if the message or marketing campaign changes regularly. The Merlin roller banner comes with our manufacturer's quality warranty, giving peace of mind that it will perform every time.

Material	Aluminium and plastic
Rail	Snap rail
Pole	Hybrid adjustable height telescopic pole
Leader	Cassette banner with adhesive leader
Graphic area	Single-sided
Feet	Adjustable
Transport	Padded nylon with side opening and foam reinforced ends

850 mm	UB160-850-01	915(w) x 1655/2315(h) x 195(d) mm
--------	--------------	-----------------------------------



Interchangeable graphic cassette - swap messaging in seconds



Replacement cassette - 850 mm	UB175-850-01
-------------------------------	--------------



Barracuda



The original best-selling premium Barracuda roller banner delivers a reliable, enduring display which is backed up by a life-time manufacturer's hardware warranty. The stylish Anodised Silver aluminium base has an elegant pinstripe detail on the front casing. Barracuda is height adjustable and has a large internal graphic housing and tensioner.

Material	Aluminium and plastic
Rail	Patented snap rail
Pole	Hybrid adjustable height telescopic pole
Leader	Self-adhesive slider
Graphic area	Single-sided
Feet	Adjustable
Transport	Padded nylon with side opening and foam reinforced ends

800 mm	WH321C-800A3	860(w) x 1605/2210(h) x 200(d) mm
1000 mm	WH321C-1000A3	1060(w) x 1605/2210(h) x 200(d) mm
1200 mm	WH321C-1200A3	1260(w) x 1605/2210(h) x 200(d) mm
1500 mm	WH321C-1500A3	1560(w) x 1605/2210(h) x 200(d) mm
2000 mm	WH321C-2000A3	2060(w) x 1605/2210(h) x 200(d) mm
2400 mm	WH321C-2400A3	2460(w) x 1605/2210(h) x 200(d) mm



Hybrid telescopic pole



Rail cap



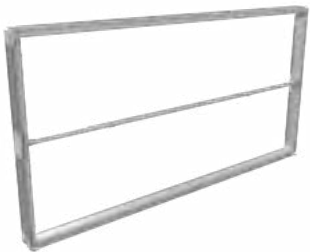
Ratchet graphic tensioner



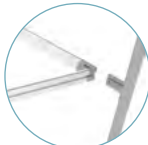
FASTFRAME™ 1000x500 - 2 Pack



Fastframe™	FF-100X50	1000(w) x 500(h) x 40(d) mm
Fastframe™ (Black back graphic)	G-FF-100X50-BB	1000(w) x 500(h)
Fastframe™ (Polyester stretch graphic)	G-FF-100X50-PS	1000(w) x 500(h)



Portable carry bag



Feet can be added
if required.
Feet sold separately



Silicone Edged
Graphics (SEG)

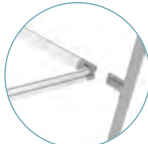
FASTFRAME™ 1000x1000 - 2 Pack



Fastframe™	FF-100X100	1000(w) x 1000(h) x 40(d) mm
Fastframe™ (Black back graphic)	G-FF-100X100-BB	1000(w) x 1000(h)
Fastframe™ (Polyester stretch graphic)	G-FF-100X100-PS	1000(w) x 1000(h)



Portable carry bag



Feet can be added
if required.
Feet sold separately



Silicone Edged
Graphics (SEG)



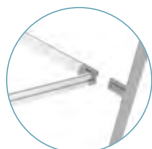
FASTFRAME™ 950x2000



Fastframe™	FF-95X200	954(w) x 2007(h) x 400(d) mm
Fastframe™ (Black back graphic)	G-FF-95X200-BB	950(w) x 2000(h)
Fastframe™ (Polyester stretch graphic)	G-FF-95X200-PS	950(w) x 2000(h)



Portable carry bag



Includes 2 x feet



Silicone Edged
Graphics (SEG)



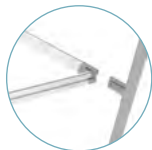
FASTFRAME™ 950x2400



Fastframe™	FF-95X240	954(w) x 2407(h) x 400(d) mm
Fastframe™ (Black back graphic)	G-FF-95X240-BB	950(w) x 2400(h)
Fastframe™ (Polyester stretch graphic)	G-FF-95X240-PS	950(w) x 2400(h)



Portable carry bag



Includes 2 x feet



Silicone Edged
Graphics (SEG)



FASTFRAME™

FASTFRAME™ 950x2500



Fastframe™	FF-95X250	954(w) x 2507(h) x 400(d) mm
Fastframe™ (Black back graphic)	G-FF-95X250-BB	950(w) x 2500(h)
Fastframe™ (Polyester stretch graphic)	G-FF-95X250-PS	950(w) x 2500(h)

NEW
PRODUCT



Portable carry bag



Includes 2 x feet



Silicone Edged
Graphics (SEG)



FASTFRAME™ 1000x2000



Fastframe™	FF-100X200	1004(w) x 2007(h) x 400(d) mm
Fastframe™ (Black back graphic)	G-FF-100X200-BB	1000(w) x 2000(h)
Fastframe™ (Polyester stretch graphic)	G-FF-100X200-PS	1000(w) x 2000(h)



Portable carry bag



Includes 2 x feet



Silicone Edged
Graphics (SEG)



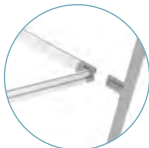
FASTFRAME™ 1000x2400



Fastframe™	FF-100X240	Ⓢ 1004(w) x 2407(h) x 400(d) mm
Fastframe™ (Black back graphic)	G-FF-100X240-BB	Ⓢ 1000(w) x 2400(h)
Fastframe™ (Polyester stretch graphic)	G-FF-100X240-PS	Ⓢ 1000(w) x 2400(h)



Portable carry bag



Includes 2 x feet



Silicone Edged
Graphics (SEG)



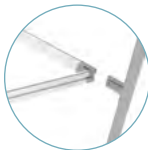
FASTFRAME™ 1000x2500



Fastframe™	FF-100X250	Ⓢ 1004(w) x 2507(h) x 400(d) mm
Fastframe™ (Black back graphic)	G-FF-100X250-BB	Ⓢ 1000(w) x 2500(h)
Fastframe™ (Polyester stretch graphic)	G-FF-100X250-PS	Ⓢ 1000(w) x 2500(h)



Portable carry bag



Includes 2 x feet



Silicone Edged
Graphics (SEG)



FASTFRAME™ 1200x2400



Fastframe™	FF-120X240	1204(w) x 2407(h) x 400(d) mm
Fastframe™ (Black back graphic)	G-FF-120X240-BB	1200(w) x 2400(h)
Fastframe™ (Polyester stretch graphic)	G-FF-120X240-PS	1200(w) x 2400(h)



Portable carry bag



Includes 2 x feet



Silicone Edged
Graphics (SEG)



Tabletop Displays

Breeze



The Breeze mini roller banner is ideal for use on a tabletop, counter, or reception desk. Ultra-light and simple to assemble, it delivers a professional, smart display that is elegant and stylish.

Material	Aluminium, plastic end caps on rail
Rail	Self-adhesive
Pole	Aluminium, two-part pole
Leader	Self-adhesive
Graphic area	Single-sided
Transport	Padded nylon bag

Breeze A4	WH360	332(w) x 440(h) x 82(d) mm
Breeze A3	WH361	238(w) x 335(h) x 80(d) mm



Custom printed tablecloth to
promote your messaging



Two-piece support pole



Tension banners (X Banner)

Beijing Lite



The Beijing Lite is a basic X-Banner with an ultra-light frame. It is very easy to assemble and compact once packed down.

Material	Fibreglass
Graphic area	Single-sided
Graphic attachment	Eyelets
Application	Free-standing
Transport	Budget drawstring carry bag

600 mm	WH358-6X16-01	Ⓢ 600(w) x 1800(h) x 650(d) mm
800 mm	WH358-8X18-01	Ⓢ 800(w) x 1800(h) x 650(d) mm



Banner reverse



Graphic attaches with eyelets



Blizzard



Blizzard is a great all-rounder as it is ideal for all kinds of corporate, sporting and outdoor events. Its simple design makes it very easy to assemble on-site, and because it's adjustable, it can accommodate different graphic sizes to suit your application.

Material	Plastic and metal
Pole	Adjustable in width and height
Graphic area	Single-sided
Graphic attachment	Eyelets
Base capacity	12 litres
Wind resistance	Up to 18 mph / 29 km/h
Transport	Non-padded bag

Blizzard	UB701	Ⓢ 600/800(w) x 1600/2100(h) x 540(d) mm
----------	-------	---



Non-padded bag included



We offer a comprehensive range of professional display signage solutions for a variety of uses from navigational signs to advertising, information, decorative and display needs.



Display signage solutions are versatile, reusable, durable, and reliable, ensuring investment in hardware is maximised, whilst allowing the flexibility to update marketing messages frequently.

Display Signs

With a wide choice of installation options such as wall, suspended or free-standing, we are proud to offer one of the most comprehensive ranges on the market.



Free-standing signs

Wedge



Wedge is a weighted clamping banner base range that comes in 2 parts and is designed to hold a variety of rigid substrates for indoor or temporary outdoor usage. Available in four sizes from 300mm up to 1000mm, Wedge can be used in tandem with a second pair of bases to create larger displays.

Material	Powder coated steel
Graphic area	Single or double-sided
Graphic attachment	Screwed to base
Graphic option	Rigid panel from 18-40mm thickness - optional extra 1500mm height max.
Application	Free-standing

Wedge 300 mm	UB102-300-S	Ⓢ 300(w) x 85(h) x 360(d) mm
Wedge 600 mm	UB102-600-S	Ⓢ 600(w) x 85(h) x 360(d) mm
Wedge 800 mm	UB102-800-S	Ⓢ 800(w) x 85(h) x 360(d) mm
Wedge 1000 mm	UB102-1000-S	Ⓢ 1000(w) x 85(h) x 360(d) mm



Sentry



Sentry is a handy and versatile way of imparting brand messaging or wayfinding information quickly and tool-free using the 'snap action' poster area which can be deployed either landscape or portrait. A3 and A4 sizes are available and the weighted base aids deployment in high foot-fall areas.

Material	25mm aluminium profile, clear PVC protection sheet
Colour	Anodised Silver, chromed corners
Mounting	Free-standing
Graphic attachment	Snap rail
Graphic option	Suitable for substrates up to 420 microns
Positioning	Portrait or Landscape

Sentry A4	SL104	Ⓢ 245(w) x 1005(h) x 326(d) mm
Sentry A3	SL103	Ⓢ 245(w) x 1075(h) x 326(d) mm



Snap frame

Symbol



Symbol is constructed of robust weighted steel and angled for optimal viewing and reading for better engagement with prospective customers. Interchangeable graphics slide in to the recess channel and fix in place tool-free with a turnscrew.



Material	Steel
Profile colour	Black
Assembly	Allen key and thumb screws
Graphic attachment	Thumbscrews
Graphic option	Rigid PVC and Dibond (3-5 mm thickness)
Weight	7.2 kg
Wind speed	18 mph

Symbol	IP01	<div>  420(w) x 1280(h) x 450(d) mm (A4) </div> <div>  480(w) x 1280(h) x 450(d) mm (A3) </div>
--------	------	---



Content detail



Tool-free locking mechanism



Quick change graphic





Whirlwind



The Whirlwind signage solution is a heavy duty, weather resistant swing sign with a wheeled base for ease of deployment. Base can be filled with a whopping 25 litres of water to keep in place. Double-sided graphics are held securely in a front loading 'snap-action' double-sided panel and it all flat packs for ease of transportation. A perfect piece of kit!



Material	Aluminium, steel, plastic base, PVC sheet cover
Graphic area	Double-sided
Graphic attachment	Snap rail
Graphic option	Banner vinyl
Application	Free-standing

Whirlwind - A1	UB207-A1	<div>  780(w) x 1165(h) x 500(d) mm </div>
Whirlwind - A0	UB207-A0	<div>  1010(w) x 1554(h) x 625(d) mm </div>



Tool-free snap rail



Wheels for easy transportation



A-sign Board



Pavement signage is a marketing stalwart. No high street would be without one, and the A-sign Board is one of the best. Simple to use with double-sided 'snap-action' front loading frames, complete with protective PVC sheeting to shield graphics which can be changed over and over again to keep up with brand messaging or offers.



Material	Aluminium, steel, PVC sheet cover
Graphic area	Double-sided
Graphic attachment	Snap rail
Wind speed	18 mph
Weight	10.56 kg

A-sign Board A1	VF204-C	638(w) x 1060(h) x 825(d) mm
-----------------	---------	------------------------------



Snap frame



Formulate Shadow



Formulate Shadow is a no fuss outdoor sign offering customers a viable alternative to traditional outdoor signs that typically rely on water or sand for stability.



Material	Steel
Assembly	Push-fit button/Allen key
Tube	32 mm
Graphic area	Double-sided
Graphic attachment	Zippered tension fabric graphic
Wind resistance	Up to 18 mph / 29 km/h
Weight	12.7 kg

Formulate Shadow	FORM-ODS	800(w) x 1174(h) x 420(d) mm
------------------	----------	------------------------------



Integrated castors



Base with handle



Monsoon



Monsoon is a perfect all-weather sturdy single or double-sided 'A' frame banner with bungeed PVC eyelet banner graphics - perfect for displaying brand messaging or wayfinding information.



Material	Aluminium tubes (25 mm), plastic connectors
Graphic area	Single or double-sided
Graphic attachment	Eyelets and looped bungee cords
Wind resistance	Up to 24 mph / 39 km/h

Monsoon 2500 mm	UB707-C	Ⓢ 2500(w) x 1000(h) x 640(d) mm
Monsoon 3000 mm	UB711-C	Ⓢ 3000(w) x 1250(h) x 795(d) mm



Eyeletted graphic attaches to frames with bungee cord



Metal hinge



Interlocking sections



Stowaway



Make brand messaging or wayfinding information literally pop with the Stowaway pop-out display banner that deploys in seconds for use either indoors or secured outside with pegs supplied.



Material	Sprung steel pole
Graphic area	Double-sided
Graphic attachment	Elasticated pole pocket
Ground fixing	4 pegs (included)
Transport	Carry bag included
Wind Speed	18 mph (when pegged)

Stowaway 1400 mm	UB736-03A	Ⓢ 1420(w) x 700(h) x 400/480(d) mm
Stowaway 2000 mm	UB736-01A	Ⓢ 2020(w) x 1000(h) x 400/480(d) mm



Internal hook and loop straps



Portable carry bag

Formulate Round Table



The Formulate Round Table is a popular table shape for reception with a welded base for extra stability. Display your message at 360° angle with optional washable tension fabric graphic. If you already have a display table and are looking for a custom printed tablecloth to promote your messaging, then contact us for a custom made quote. So whether you are looking for a large table cloth with hem, or smaller option with a slim silhouette, we can create a striking made to measure graphic to suit.

Material	Polypropylene
Assembly	Push-fit buttons
Graphic area	360°
Transport	Carry bag included

Formulate Round Table	FORM-TS-01A	Ⓢ 1000(h) x 600(dia) mm
-----------------------	-------------	-------------------------



Padded carry bag included



Simple assembly using numbered system



Ask about our custom printed tablecloths to promote your messaging

Wall mounted signs

Trappa Frame



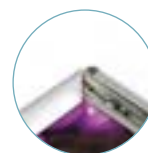
The Trappa 'snap-action' Frame delivers a professional look and is quick to fix to a wall and easy to update. Posters can be changed, simply by opening the frame edges.

Material	25mm aluminium profile, clear PVC protection sheet
Colour	Anodised Silver
Mounting	Wall*
Graphic attachment	Snap rail
Graphic option	Suitable for substrates up to 420 microns
Positioning	Portrait or Landscape

Trappa A4	AT401-C	241(w) x 328(h) x 13(d) mm
Trappa A3	AT402-C	328(w) x 451(h) x 13(d) mm
Trappa A1	AT404-C	625(w) x 872(h) x 13(d) mm



* Wall mounting screws not included



Trappa snap frame

Suspended signs

Twista Lite



Twista Lite delivers a smart, modern poster display system that is quick and simple to deploy via the 'snap-action' rail. Versatile, as well as functional, it can be displayed single-sided on walls or double-sided when suspended from ceilings.

Material	Aluminium (rail), plastic (end caps, hooks)
Colour	Grey
Mounting	Wall / Ceiling
Graphic area	Single or double-sided
Graphic attachment	Snap rail

500 mm Kit	TWLHR-500	500(w) x 31(h) x 12(d) mm
600 mm Kit	TWLHR-600	600(w) x 31(h) x 12(d) mm
800 mm Kit	TWLHR-800	800(w) x 31(h) x 12(d) mm
850 mm Kit	TWLHR-850	850(w) x 31(h) x 12(d) mm
1000 mm Kit	TWLHR-1000	1000(w) x 31(h) x 12(d) mm
1500 mm Kit	TWLHR-1500	1500(w) x 31(h) x 12(d) mm
Twista closed grey hook	TWLHR-CG	
Twista left grey moulding	TWLHR-LG	
Twista right grey moulding	TWLHR-RG	
3100 mm (rail only)	TWLHR-3100	3100(w) x 31(h) x 12(d) mm



The snap rail clamps media securely



Top rail with hanging



Snap rail

Display Boards

Baseline Panel and Pole Kits



Panel kits are easy to assemble, reconfigure and re-position. Baseline Panel and Pole kits come in two heights (600mm or 700mm) and two widths (900mm or 1000mm). Stabilising feet are included and kits are manufactured to order.

Material	Luxury foam backed loop nylon	
Profile Colour	Grey PVC Extrusion	
Finishes	Baseline board with grey PVC frame Baseline Plus board with grey PVC frame	
Application	Free-standing with stabilising feet (included)	

4 Panel Kit - Baseline	KK104G	⊙, 900(w) X 600(h) mm
4 Panel Kit - Baseline Plus	KKP104-96G	⊙, 900(w) X 600(h) mm
6 Panel Kit - Baseline	KK106G	⊙, 900(w) X 600(h) mm
6 Panel Kit - Baseline Plus	KKP106-96G	⊙, 900(w) X 600(h) mm
8 Panel Kit - Baseline	KK108G	⊙, 900(w) X 600(h) mm
8 Panel Kit - Baseline Plus	KKP108-96G	⊙, 900(w) X 600(h) mm
10 Panel Kit - Baseline	KK110G	⊙, 900(w) X 600(h) mm
10 Panel Kit - Baseline Plus	KKP110-96G	⊙, 900(w) X 600(h) mm

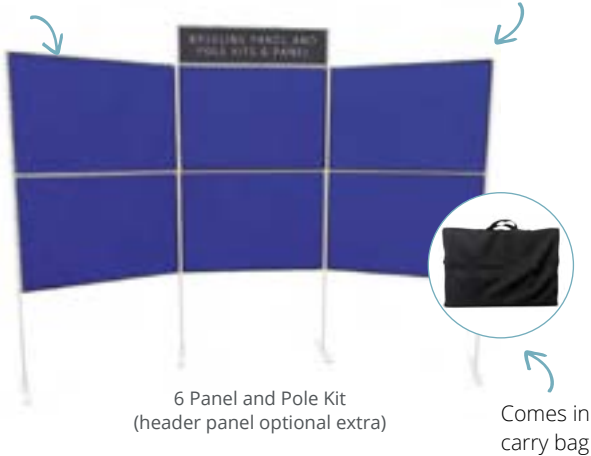
6 Panel - Baseline Plus	KKP106-107G	⊙, 1000(w) x 700(h) mm
8 Panel - Baseline Plus	KKP108-107G	⊙, 1000(w) x 700(h) mm
10 Panel - Baseline Plus	KKP110-107G	⊙, 1000(w) x 700(h) mm

Ancillaries / Optional Extras:

300mm Diameter circular base (singular)	LB913S-C	⊙, 300mmØ
Baseline Header Panel	BH153G	⊙, 250mm x 600mm
Baseline Plus Header Panel	KKPH-600G	⊙, 250mm x 600mm
Baseline Header Panel	BH154G	⊙, 250mm x 700mm
Baseline Plus Header Panel	KKPH-700G	⊙, 250mm x 700mm
Baseline Header Panel	BH155G	⊙, 250mm x 900mm
Baseline Plus Header Panel	KKPH-900G	⊙, 250mm x 900mm
Baseline Header Panel	BH156G	⊙, 250mm x 1000mm
Baseline Plus Header Panel	KKPH-1000G	⊙, 250mm x 1000mm
Header pole (2 required for a singular header)	UP201GM	⊙, 250mm High

Attach your items with hook

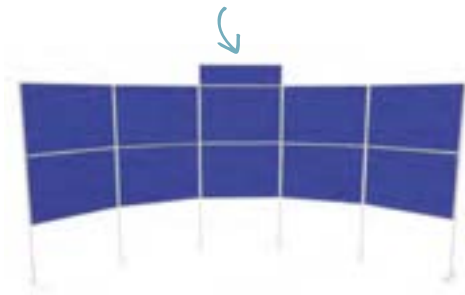
Each panel can be assembled horizontally or vertically



6 Panel and Pole Kit
(header panel optional extra)

Comes in carry bag

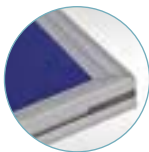
10 Panel Kit
(header panel optional extra)



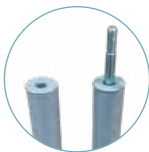
8 Panel Kit



10 Panel Kit



Baseline PVC (thickness 18.2 mm)
Baseline Plus PVC (thickness 25 mm)



25mm

Baseline Tabletop Panel Kits



Baseline Tabletop Panel kits are part of our classic folding panel range of practical and durable displays, ideally sized for counter-tops.

Material	Luxury foam backed loop nylon
Profile Colour	Grey PVC Extrusion
Finishes	Baseline board with grey PVC frame Baseline Plus board with grey PVC frame
Application	Free-standing

Junior kit - Baseline	KK102G	1 x 900(w) x 600(h) mm 2 x 450(w) x 600(h) mm Header = 900(w) x 250(h) mm
Senior kit - Baseline	KK103G	3 x 600(w) x 900(h) mm Header = 600(w) x 250(h) mm

Attach your items with hook



Baseline PVC
(thickness 18.2 mm)



Comes in carry bag



Baseline Panel Folding Kits



Baseline Panel Kits are easy to assemble and versatile. Panels are hinged and available in two heights (900mm and 1000mm) and two widths (600mm and 700mm). Manufactured to order.

Material	Luxury foam backed loop nylon
Profile Colour	Grey PVC Extrusion
Finishes	Baseline board with grey PVC frame Baseline Plus board with grey PVC frame
Application	Free-standing

Attach your items with hook



Wooden shelf available in 7 & 10 panel kits

900 x 600mm Panels:

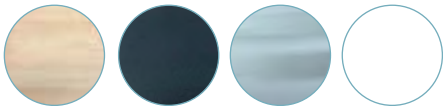
6 Panel Kit - Baseline	KK117G	600(w) x 900(h) mm
6 Panel Kit - Baseline Plus	KKP117G	600(w) x 900(h) mm
7 Panel Kit - Baseline	KK114G	600(w) x 900(h) mm
7 Panel Kit - Baseline Plus	KKP114G	600(w) x 900(h) mm
8 Panel Kit - Baseline	KK120G	600(w) x 900(h) mm
8 Panel Kit - Baseline Plus	KKP120G	600(w) x 900(h) mm
10 Panel Kit - Baseline	KK124G	600(w) x 900(h) mm
10 Panel Kit - Baseline Plus	KKP124G	600(w) x 900(h) mm

1000 x 700mm Panels:

6 Panel - Baseline	KK317G	700(w) x 1000(h) mm
6 Panel - Baseline Plus	KKP317G	700(w) x 1000(h) mm
7 Panel - Baseline	KK314G	700(w) x 1000(h) mm
7 Panel - Baseline Plus	KKP314G	700(w) x 1000(h) mm
8 Panel - Baseline	KK320G	700(w) x 1000(h) mm
8 Panel - Baseline Plus	KKP320G	700(w) x 1000(h) mm
10 Panel - Baseline	KK222G	700(w) x 1000(h) mm
10 Panel - Baseline Plus	KKP222G	700(w) x 1000(h) mm



Baseline PVC (thickness 18.2 mm)
Baseline Plus PVC (thickness 25 mm)



Triangular tabletops available in beech, black, silver and white



Comes in carry bag

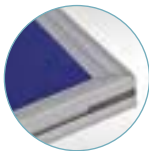
Baseline Jumbo Panel Kits



Baseline Jumbo Panel Kits are easy to assemble and re-positionable. Panels are hinged and free-standing. Position panels in multiple ways. Use to create a screen or office partition. Manufactured to order.

Material	Luxury foam backed loop nylon
Profile Colour	Grey PVC Extrusion
Finishes	Baseline board with grey PVC frame Baseline Plus board with grey PVC frame
Application	Free-standing

3 Panel Kit - Baseline	KK350G	900(w) X 1800(h) mm*
3 Panel Kit - Baseline Plus	KKP350G	900(w) X 1800(h) mm*
4 Panel Kit - Baseline	KK351G	900(w) X 1800(h) mm*
4 Panel Kit - Baseline Plus	KKP351G	900(w) X 1800(h) mm*



Baseline PVC (thickness 18.2 mm)
Baseline Plus PVC (thickness 25 mm)

*Individual panel size

Baseline Wheeled Panel Kits



Baseline Jumbo Panel Kits are easy to assemble and re-positionable. Panels are hinged and free-standing. Position panels in multiple ways. Use to create a screen or office partition. Manufactured to order.



5 Panel Baseline Plus Kit - 1500(h) mm	KKPW5-156G	600(w) x 1500(h) mm
5 Panel Baseline Plus Kit - 1800(h) mm	KKPW5-186G	600(w) x 1800(h) mm
6 Panel Baseline Plus Kit - 1500(h) mm	KKPW6-156G	600(w) x 1500(h) mm
6 Panel Baseline Plus Kit - 1800(h) mm	KKPW6-186G	600(w) x 1800(h) mm
7 Panel Baseline Plus Kit - 1500(h) mm	KKPW7-156G	600(w) x 1500(h) mm
7 Panel Baseline Plus Kit - 1800(h) mm	KKPW7-186G	600(w) x 1800(h) mm

Baseline Plus Panel Screens come in a choice of 2 different heights with either 5, 6 or 7 panels

*Individual panel size



Baseline Plus PVC (thickness 25 mm)

When Folded			Extended Panel		Extended Panel	
Height	Width	Depth	Length		Length	
1550mm	600mm	125mm	1800mm		2750mm	
1550mm	600mm	150mm	2400mm		3300mm	
1550mm	600mm	175mm	3000mm		3850mm	
1850mm	600mm	125mm	1800mm		2750mm	
1850mm	600mm	150mm	2400mm		3300mm	
1850mm	600mm	175mm	3000mm		3850mm	

Approximate dimensions depending on the set up

ADDITIONS:

Baseline Panels – Customisable and Versatile Display Solutions

Baseline panels are perfect for expanding your existing display boards or building a completely custom setup. These configurable panels offer flexibility to create displays tailored to your unique needs, whether for exhibitions, events, or office spaces.

Fully Customisable: Add extra panels to your current setup or combine them to design a display board from scratch.

Flexible Configuration: Adapt the layout to suit your space and messaging requirements with ease.

Accessories Sold Separately: Please note that all clips and poles are sold separately, giving you the freedom to choose only the components you need.

Baseline vs. Baseline Plus

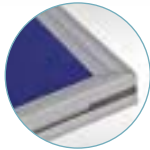
The key difference between Baseline and Baseline Plus panels lies in their thickness:

Baseline Panels: Standard thickness, ideal for lightweight and portable setups.

Baseline Plus Panels: A thicker, more robust option for increased durability and stability.

Whether you're enhancing an existing display or starting fresh, Baseline panels offer the quality and flexibility you need to create impactful presentations.

BP101G	Baseline Panel 600mm x 450mm
BP102G	Baseline Panel 900mm x 600mm
BP105G	Baseline Panel 1000mm x 700mm
BP107G	Baseline Panel 1000mm x 1000mm
BP110G	Baseline Panel 1500mm x 1000mm
BP112G	Baseline Panel 1800mm x 900mm
BP113G	Baseline Panel 2000mm x 1000mm
KKP-96G	Baseline Plus Panel 900mm x 600mm
KKP-107G	Baseline Plus Panel 1000mm x 700mm
KKP-101G	Baseline Plus Panel 1000mm x 1000mm
KKP-189G	Baseline Plus Panel 1800mm x 900mm



Baseline PVC (thickness 18.2 mm)
Baseline Plus PVC (thickness 25 mm)

Ancillaries

25mm Poles

The display panel male and female poles are essential components designed for secure and versatile assembly of modular display systems.

Male Pole: Features a precise connector that fits seamlessly into the female pole, ensuring a stable and reliable connection. Ideal for creating vertical structures or supporting panels with ease.

Female Pole: Crafted to receive the male pole connector, providing a snug and sturdy fit.

The poles are designed for compatibility and quick assembly during exhibitions or events.

Both poles are made from durable, lightweight materials, ensuring they are easy to transport while being structurally sound. Their sleek design blends effortlessly with various display systems, making them a practical and professional choice for any setup. All poles are finished in grey and are sold separately.

UP201GF	25mm x 250mm Female Pole
UP201GM	25mm x 250mm Male Pole
UP204GF	25mm x 600mm Female Pole
UP204GM	25mm x 600mm Male Pole
UP205GF	25mm x 900mm Female Pole
UP205GM	25mm x 900mm Male Pole
UP206GF	25mm x 1000mm Female Pole
UP206GM	25mm x 1000mm Male Pole
UP209GM	25mm x 1800mm Male Pole
UP209GF	25mm x 1800mm Female Pole
UP210GF	25mm x 2000mm Female Pole
UP210GM	25mm x 2000mm Male Pole



Ancillaries

Bases

AG712S	Channel Feet
LB913S-C	300mm Diameter Circular Base (Singular)

Supplied with M8 Hex bolt for attaching to 25mm diameter poles



Clips

Optional carry bag available for this product

ULMO02-G	25mm Pole Clip Grey (Single)
GA106G	25mm Pole Clip Grey (Pack of 10)
ULMO04-G	0mm Panel Clip Grey (Single)
GA103G	0mm Panel Clip Grey (Pack of 10)



Supplied in packs of 10



Hook

AG707	25m roll
-------	----------



Panel Bags

Baseline Panel & Pole Kits (900 x 600mm size)

4 Panel	KK104G	AB110
6 Panel	KK106G	AB110
8 Panel	KK108G	AB109A
10 Panel	KK110G	AB110A

Baseline Plus Panel & Pole Kits (900 x 600mm size)

4 Panel	KKP104-96G	AB110
6 Panel	KKP106-96G	AB114A
8 Panel	KKP108-96G	AB114A
10 Panel	KKP110-96G	AB114A

Baseline Panel & Pole Kits (1000 x 700mm size)

6 Panel	KKP106-107G	AB114A
8 Panel	KKP108-107G	AB114A
8 Panel	KKP110-107G	AB114A

Baseline Folding Kits (900 x 600mm size)

Junior	KK102G	AB110
Senior	KK103G	AB110
6 Panel	KK117G	AB110
7 Panel	KK114G	AB110A
8 Panel	KK120G	AB110A
10 Panel	KK124G	AB110A

Baseline Folding Kits (1000 x 700mm size)

6 Panel	KK317G	AB114A
7 Panel	KK314G	AB114A
8 Panel	KK320G	AB114A
10 Panel	KK222G	AB114A

Baseline Plus Folding Kits (900 x 600mm size)

6 Panel	KKP117G	AB110A
7 Panel	KKP114G	AB110A
8 Panel	KKP120G	AB110A
10 Panel	KKP124G	2 x AB110A

Baseline Plus Folding Kits (1000 x 700mm size)

6 Panel	KKP217G	AB114A
7 Panel	KKP314G	AB114A
8 Panel	KKP320G	2 x AB114A
10 Panel	KKP222G	2 x AB114A



Base Bag

AB108

Base Bag (4 bases fit in one bag)
Suitable for LB913S-C bases only

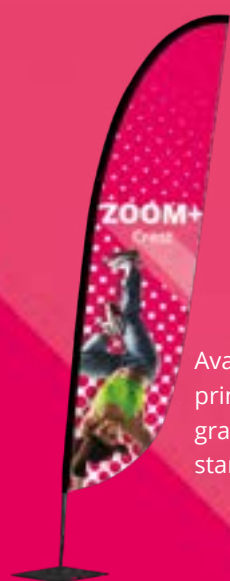
Draw attention to branding, products, services, or business premises with custom printed flags.

Instantly noticeable due to their height, shape, and movement, our all-fibre flag poles are durable and flexible, easy to assemble and quick to deploy, making them an extremely effective means of advertising.

Choose from a range of free-standing, post / wall mounted, mobile and specialist hardware that can be used in a variety of applications such as car forecourts, festivals, and beach flags.

Alternatively, deploy taller or multiple flags to increase visibility and attention to branding. Our all-fibre flag poles are reusable with interchangeable graphics for greater return on investment. To protect this investment, it is recommended that flags be kept securely in place by selecting an appropriate base suitable for the desired application and location from the specifically designed range.





Flags

Available as single or double-sided options and printed using hardy, UV resistant media, flag graphics can be utilised indoors or outside with standard or custom flag shapes.



Free-standing flags

Zoom+ Quill / Feather / Crest Flag



Zoom+ flags are a popular and versatile, lightweight flexible flag system, with black finish all fibre poles. Choose Feather, Quill or Crest shaped graphics. Ideal for advertising and used for all types of indoor and outdoor displays. Optional custom printed flag graphics are available in a range of sizes from small to extra-large and with a choice of single or double-sided options (small, medium, and large). The eye-catching shape creates movement in the wind and is a great for attracting attention.



Material	GRP fibre glass pole
Graphic area	Single-sided or double-sided (double-sided only available up to large)
Graphic attachment	Pole pocket (in choice of black, white or printed)
Wind resistance	Up to 63 mph / 101 km/h*



Zoom + Extra Small	UF-ZM-XS	Ⓢ 580/535/480(w) x 1880/2150/2120(h) mm
Zoom + Small	UF-ZM-SM	Ⓢ 550/800(w) x 2100/2600(h) mm
Zoom + Medium	UF-ZM-ME	Ⓢ 600/900(w) x 2800/3200(h) mm
Zoom + Large	UF-ZM-LA	Ⓢ 800/1100(w) x 3500/4000(h) mm
Zoom + Extra large	UF-ZM-EXLA	Ⓢ 850/1200(w) x 4600/4900(h) mm

* Under controlled test conditions

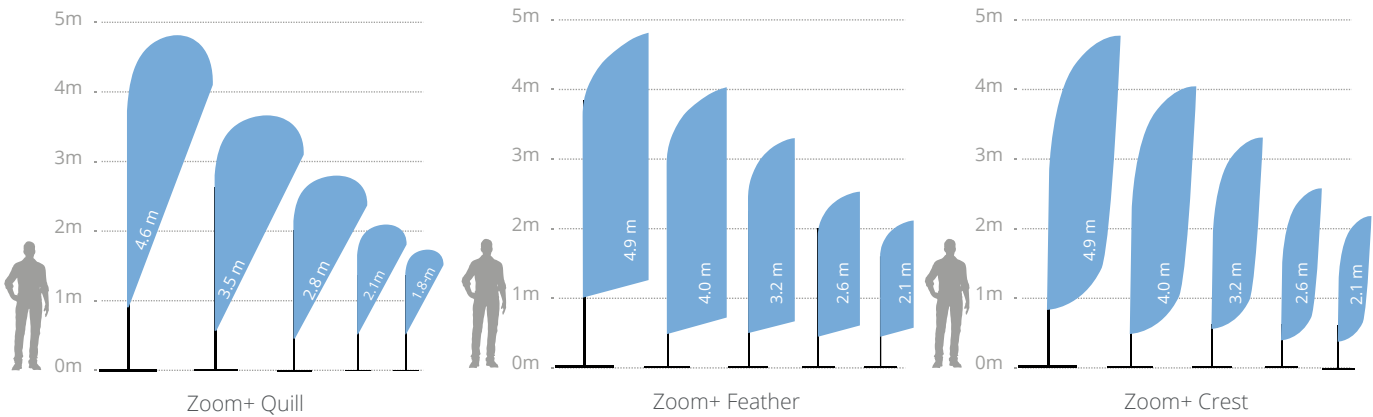


Ancillaries :

Bag (optional)	AB-ZML-01
----------------	-----------



Graphic attaches on to hook



Zoom+ Edge Flag



Zoom+ is a popular and versatile, lightweight rectangular shaped flag system with black finish all-fibre poles. Ideal for all types of indoor and outdoor displays. Quick and easy to deploy and can withstand winds of approximately 13 -18m/h (21-29km/h). Optional custom printed flag graphic available in single and double-sided options (small, medium, and large), and all flag graphics have a printed pole pocket. The flag moves naturally in breezy/windy conditions and is ideal for attracting attention on car forecourts, at exhibitions and events, or outside a building or premises.

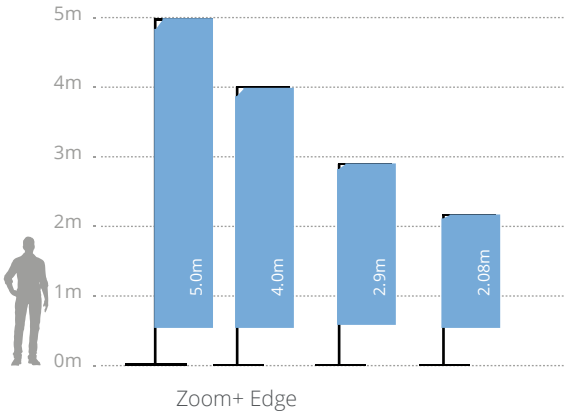


Material	Aluminium and GRP
Graphic area	Single-sided or double-sided (double-sided only available up to large)
Graphic attachment	Pole pocket
Wind resistance	Up to 18 mph / 29 km/h

Zoom + Edge Small	UF-ZME-SM	750(w) x 2080(h) mm
Zoom + Edge Medium	UF-ZME-ME	750(w) x 2900(h) mm
Zoom + Edge Large	UF-ZME-LA	750(w) x 4000(h) mm
Zoom + Edge Extra large	UF-ZME-EXLA	750(w) x 5000(h) mm



Graphic attaches on to hook



Free-standing flag bases

Weighted bases																					
Base	Product	Code				Utilisation		Zoom + Quill					Zoom+ Feather/ Crest					Zoom + Edge			
						Int.	Ext.	XS	S	M	L	XL	XS	S	M	L	XL	S	M	L	XL
	Large water base	UF-ZMLWB	50 x 50 x 26 cm	3.3 - 33 kg																	
	Stackable water base	UF-ZMSWB	64.2 x 64.2 x 27.7 cm	3.6 - 30 kg																	
	Parasol base	UF-ZMGMB	44 x 44 x 25 cm	1.2 - 23 kg																	

Metal and cement bases																					
Base	Product	Code				Utilisation		Zoom + Quill					Zoom+ Feather/ Crest					Zoom + Edge			
						Int.	Ext.	XS	S	M	L	XL	XS	S	M	L	XL	S	M	L	XL
	Zoom+ Small cross base	UF-ZMSCB-01	140 x 475 x 410 mm	1.05kg																	
	Zoom + Large cross base	UF-ZMLCB-01	240 x 400 x 400 mm	1.5 kg																	
	Zoom + Concrete base	UF-ZMCEM	Ø 450 x 350 mm	22.5 kg																	
	Zoom + Small square base 7,5 kg	UF-ZMLSQ-01	130 x 400 x 400 mm	7.5 kg																	
	Zoom + Large square base 12.5kg	UF-ZMLSQ-03	130 x 450 x 450 mm	12.5kg																	
	Zoom + Drive on car foot	UF-ZMCF5-01	605 x 195 x 125 mm	1.7 kg																	

Spikes																					
Base	Product	Code				Utilisation		Zoom + Quill					Zoom+ Feather/ Crest					Zoom + Edge			
						Int.	Ext.	XS	S	M	L	XL	XS	S	M	L	XL	S	M	L	XL
	Zoom + Ground spike	UF-ZMGS-01	600 mm	1.16kg																	
	Zoom + Budget ground spike	UF-ZMBGS-01	600 mm	1kg																	
	Zoom + Plastic Ground Stake	UF-ZMPSS-01	520 mm	0.8kg																	



*Use with Weighting ring UB719-C



** Use with Heavy duty pegs FX620

Zoom+ Arch



The Zoom+ Arch stands out at any outdoor event or activity. With an overall height of 3m to the top of the graphic and a 4m width, it's perfect to use as a focal point or to attract attention. Simple and quick to assemble, it can be deployed in minutes and when used with the optional stackable bases, provides an extremely stable display that can be used in wind speeds of up to 20mph.

Material	GRP fibre glass pole - chrome steel end caps, plastic hook
Graphic area	Single-sided
Graphic attachment	Pole pocket
Wind resistance	Up to 19 km/h

Zoom+ Arch	ZOOM+ARCH	⊗ 4000(w) x 2500/3000(h) mm
Stackable base (optional) recommended that 2 bases either side are used	UF-ZMSWB	⊗ 642(w) x 277(h) x 642(d) mm



Supplied with 1 x 6-part bungee pole, 2 x base rods and hooks



Graphic attaches on to plastic hook



Water fillable base



Handle for easy transportation



Wind Dancer



An imposing telescopic flag which stands 5m high when fully assembled and is certain to make an impact at any outdoor event, Wind Dancer comes complete with a base which can be filled with either water or sand. The 3.5m flag height makes an impressive statement when the flagpole is deployed at its full 5m height, and is particularly impactful when used in large crowded areas because of its dominating presence.

Material	Aluminium pole, plastic base
Pole	Telescopic
Graphic area	Single-sided
Graphic attachment	Eyelets
Base capacity	66 litres
Wind resistance	Up to 18 mph / 29 km/h

Wind Dancer	WD105	⊗ 1000(w) x 2900/5300(h) x 1000(d) mm
-------------	-------	---------------------------------------



Post / wall mounted flags

Mistral



The Mistral is a fixed outdoor flag system designed for mounting to lampposts or building exteriors and is perfect for advertising or promoting a brand or event. The mechanism attaches directly to a pole, posts, or wall and can be moved to accommodate varying graphic heights. An eye-catching solution that can also be used for information and wayfinding, this flag is especially effective when repeated over a series of posts.



Material	Aluminium castings and GRP tubes
Tube	Height adjustable
Graphic area	Single-sided or double-sided
Graphic attachment	Pole pocket
Wind resistance	Up to 40 km/h

Mistral	UB725-01	895(w) x 2010(h) mm
---------	----------	---------------------

Can be fixed to a pole or wall



Post fixing

Clamp
(Ø 300mm max)



Mobile flags

Street Flag



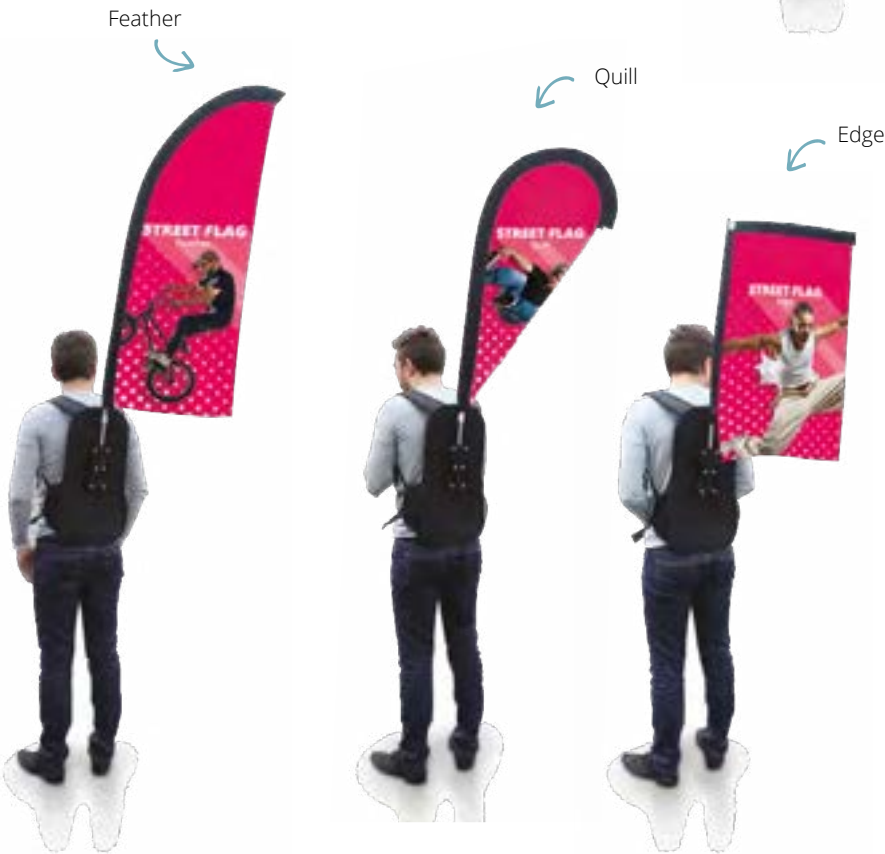
Street flag is the ideal advertising medium when on the move or when you want to attract attention in a crowded space! Perfectly suited to promote events, highlight presence at trade shows or to organise a group of people on excursions! Rugged and lightweight, the backpack can be used with four different flag shapes and comes complete with fibre poles.

Material	Reinforced nylon backpack, fibre poles
Graphic area	Single-sided
Graphic attachment	Pole pocket
Graphic shapes	Feather - Quill - Edge - X-banner

Street Flag	UF-ZMSTF-01	📏 310(w) x 540(h) x 80(d) mm
-------------	-------------	------------------------------



One bag can be used with 4 flag shapes!



Zippered compartment to store graphics



Reinforced shoulder straps, adjustable strap and side mesh pocket



Storage for poles and rods

Take advantage of outdoor events with a temporary structure and create additional marketing opportunities.

Offer customers protection and shelter from the weather by choosing custom-printed tents that also provide an attractive brand marketing solution.

Conventional pop-up tents and gazebos are fantastic outdoor or indoor structures which provide a unique way to advertise in a vibrant impactful manner with fully printed canopies and walls.

Constructed from robust steel or aluminium in a variety of sizes that are easy to transport, assemble, deploy and pack away, pop-up tents are ideal for short term events, fairs and exhibitions.





Tents

For a more unique and unconventional structure, choose the Bora Inflatable Tent. Simple to inflate for rapid deployment with an appealing eye-catching shape, the Bora, like pop-up tents, also offers optional printed canopies and walls. Customisable areas make highly effective brand

messaging, ensuring maximum impact at events. As with all custom-printed graphics, they can easily be replaced so that hardware is used multiple times, improving return on investment.

Pop-up tents

Zoom Tent Eco



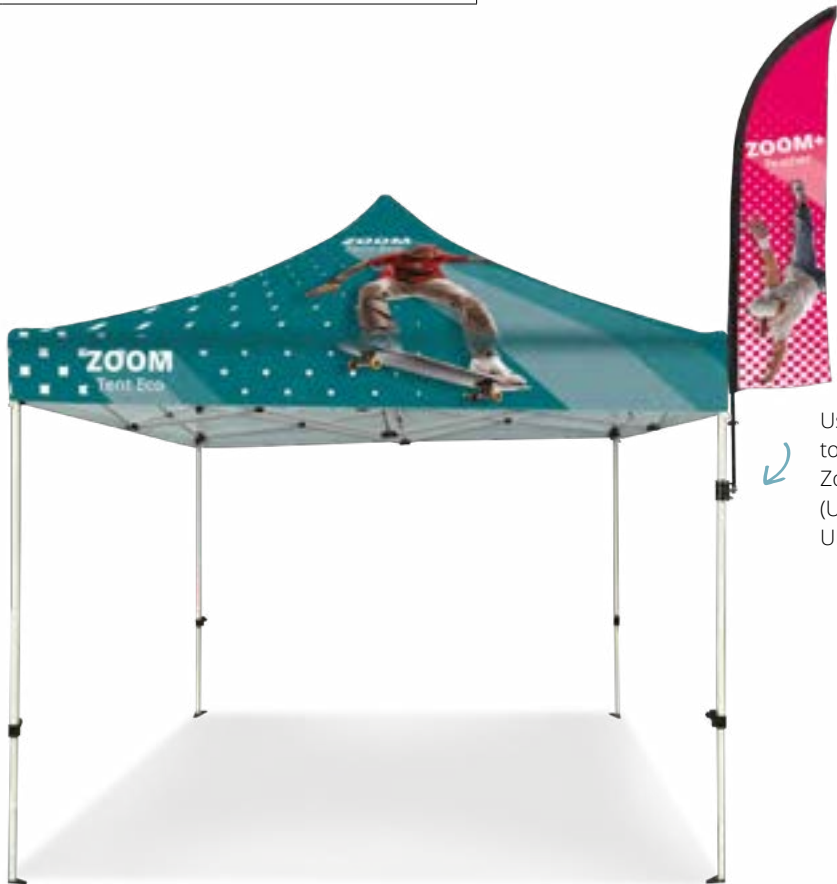
The Zoom Tent Eco is the most cost-effective gazebo in our range. Quick and easy to deploy, the 3x3m tent can easily accommodate a 2.4m wide table making it a great solution for street markets, golf days or sporting events. Made from steel with a white powder coated finish, the frame easily shelters up to five people and folds completely into a portable wheeled carry bag. Custom fully printed canopy and walling is an optional extra.



Material	Steel frame, plastic joins
Graphic area	Double-sided (wall) / single-sided (canopy)
Graphic attachment	Hook and loop
Ground fixing	Pegs and ropes (included)
Wind resistance	Up to 18 mph / 29 km/h
Transport	Wheeled standard bag



Zoom Tent Eco 3x3	FD33-SQF	3310(w) x 3315/3510(h) x 3310(d) mm
Canopy	FD33-CTW	Colour : White
Wall	FD33-FWW	Colour : White
Zoom Tent/Zoom Tent Eco Flag Clamp Bracket	ZT-FCB	



Use bracket to attach a Zoom+ flag (UF-ZM-XS UF-ZM-SM)



Locking post



Winder for opening and closing



Bracket to attach a Zoom+ flag (optional) ZT-FCB

Zoom Tent



Ensure your event's a success come rain or shine by using an easy to deploy vibrant lightweight aluminium pop-up tent frame system. The Zoom Tent folds out and returns in minutes with tool-free deployment. Dress with a custom full printed canopy, full and half walls. Available in a range of sizes.



Material	Aluminium frame, plastic joins
Graphic area	Double-sided (wall, half wall) / single-sided (canopy)
Graphic colours	White - Black (standard) / Full Graphic (optional)
Graphic attachment	Hook and loop / Pocket (half wall)
Ground fixing	Pegs and ropes (included)
Wind resistance	Up to 18 mph / 29 km/h
Transport	Wheeled Standard Bag

3x3 frame	ZT33-XAF-01	⊗ 2920(w) x 3160(h) x 2920(d) mm
3x4.5 frame	ZT345-XAF-01	⊗ 4300(w) x 3160(h) x 2920(d) mm
3x6 frame	ZT36-XAF-01	⊗ 5800(w) x 3160(h) x 2920(d) mm

Canopy	ZTXX-CTW	Colours : White
Canopy	ZTXX-CTK	Colours : Black
Wall	ZTXX-FWW	Colours : White
Wall	ZTXX-FWK	Colours : Black
Half wall	ZTXX-HWW	Colours : White
Half wall	ZTXX-HWK	Colours : Black

Ancillaries :

7.5 kg Weight	ZT-BASE
Half wall bar 3x3	ZT33-MTB
Half wall bar 3x4.5	ZT345-MTB
Zoom Tent/Zoom Tent Eco Flag Clamp Bracket	ZT-FCB



Pop-up frame



Tent weight (optional)
ZT-BASE



Automatic locking



Crank to tighten
the canopy



Bracket to attach a Zoom+ flag
(optional)
ZT-FCB

Zoom Tent 3x3 Sky Banner



Stand out from the crowd with the Sky Banner and its large print area! This horizontal banner attaches easily to the Zoom Tent 3x3 poles using clamp brackets (2 units to be ordered separately). 2 ZT-BASE ballast weights per pole recommended. Compatible with the Zoom Tent 3x3.

Material	GRP
Graphic area	Single-sided
Graphic colours	Full Graphic (optional)
Graphic attachment	Pocket + hook and loop
Wind resistance	Up to 18 mph / 29 km/h
Transport	Bag included

Zoom Tent 3x3 Sky Banner	ZT33-H-SKY	⊗ 2995(w) x 1515(h) mm
Zoom Tent/Zoom Tent Eco Clamp Bracket	ZT-FCB	





Inflatable tents

Bora Tent



The Bora Inflatable Tent is a sturdy and attractive option for outdoor displays. Create shade and shelter for a registration desk, refreshment area or meeting point that fully shows off a brand. As one of the largest products in the range, there is plenty of print area on the canopy and backwalls (optional extra) for brand messaging. The backwalls zip in, so can be changed for a different message from the canopy if you wish. The Bora Tent uses trapped air technology: silent and free-standing once inflated.



Material	TPU, Polyester inner coat
Graphic area	Single-sided
Graphic attachment	Zip system (standard) / hook and loop (full graphic)
Ground fixing	Pegs (optional)
Wind resistance	Up to 24 mph / 39 km/h (if pegged)
Transport	Standard Bag (included)

Bora Tent	INFT3-2Z	3200(w) x 2450(h) x 3200(d) mm
-----------	----------	--------------------------------



400W electric pump (optional) INFTA-PE4EU



Inflation valve



Carry bag included

Temporary counters add a professional touch to any exhibition, event or retail environment.

They provide a useful area for display or presentation space, and the ability to add a graphic creates additional marketing opportunities as well as offering a convenient storage facility.

Our counters are available in a range of price points and shapes, depending on requirements.

Add impact to a welcome desk or a reception area in a public space with an illuminated counter or choose an outdoor option to promote a product or service at an open-air event.





Counters

Counters are the perfect partner for a promotional display or event to complement a backdrop or add focus to an area and are the ideal companions for any marketing campaign.

Promotional counters

Pop-up Counta



The Pop-up Counta is convenient lightweight pop-up counter that offers a substantial area to welcome guests yet packs down for easy transportation in a reinforced D-shaped wheeled trolley case.

The counter comes with shelves for storage and a beech-coloured counter-top. Often used for exhibitions, in supermarkets as a demonstration unit and for events.

Material	Aluminium, plastic and MDF tabletop
Assembly	Self-locking magnetic
Collapsible	Yes
Counter top	Foldable - Beech colour
Shelves	4
Load bearing	25 kg
Shelf bearing	3 kg
Graphic attachment	Magnetic hangers, bars and tape (included). Suitable for 440 microns min. substrate (optional extra)
Transport	1 Wheeled trolley case

Pop-up 2x2	PUC22C-C	📏 1260(w) x 965(h) x 430(d) mm
------------	----------	--------------------------------



Structure



Magnetic fixing



Wheeled carry bag



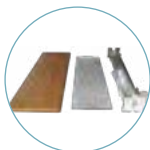
Hop-up Counta



Hop-up Counta is a durable lightweight hop-up counter, quick and easy to assemble with a single wrap around fabric graphic which stays on when collapsed and packed away. The unit is fitted with a beech effect counter top and provides a perfect welcome for guests.

Material	Aluminium, plastic, MDF tabletop and polycarbonate shelf
Assembly	Plastic locking arms
Collapsible	Yes
Counter top	Beech
Shelves	1
Load bearing	15 kg
Shelf bearing	3 kg
Graphic attachment	Hook and loop
Transport	Wheeled carry bag

Hop-up	HU301-001-C	📏 1060(w) x 1020(h) x 360(d) mm
--------	-------------	---------------------------------



Counter components



Plastic locking arm



Carry bag included



Modulate™ Counter



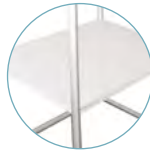
Modulate™ Counter consists of an innovative aluminium tubular frame, counter top, and printed tension fabric graphic. Powerful magnets encased inside the frame enables two or more counters to connect using simple magnetic principles. The counter can be used on its own or combined to make a long reception or bar area. Modulate™ Counter can be deployed in minutes, thanks to the tool-less construction. The printed tension fabric graphic will either sit on or under the counter-top to suit the application.

Material	Ø 30mm Aluminium tubes, MDF tabletop/shelf
Assembly	Push-fit button
Collapsible	Yes
Counter top	Black
Shelves	1 (Optional)
Load bearing	40 kg
Shelf bearing	20 kg
Graphic attachment	Zip system
Transport	Padded carry bag, internal flap

Modulate™ Counter	FORM-MOD-CNTR	800(w) x 1015(h) x 600(d) mm
Shelf	FORM-MOD-CNTR-02	770(w) x 9(h) x 571(d) mm



Tabletop is held in place by plastic moulding underneath



Optional shelf

2 possible finishes (with or without visible shelf)



Use it on its own or combined, simply by using the integrated magnets!



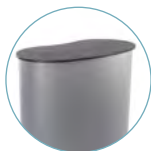
Basic Curved Counter



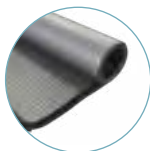
With a Double-D shape counter-top, the Basic Curved Counter delivers a functional and stylish look which is perfect to use for a reception desk or meeting point. The Counter is made from a rollable Corex tambour wrap to create the curved shape which push-fits into the thermoformed counter-top and base. A graphic can also be applied to the curved base to promote a message or brand. There is an opening for storage at the rear of the unit.

Material	MDF tabletop/base, Corex wrap
Assembly	Push-fit - Tool-free
Collapsible	Yes
Counter top	Beech / black
Load bearing	50 kg
Transport	2 carry bags - included

Basics Curved Counter beech/beech	PK922-BEBE	900(w) x 926(h) x 470(d) mm
Basics Curved Counter black/beech	PK922-BLKBE	900(w) x 926(h) x 470(d) mm
Basics Curved Counter black/white	PK922-BLKW	900(w) x 926(h) x 470(d) mm
Shelf	PK922-SHELF-KIT	10(w) x 853(h) x 398(d) mm



Interchangeable tabletops and bases



Grey counter wrap



Carry bag included



Optional shelf

Fastframe™ Counter



Complete your exhibition stand with the FASTFRAME™ counter. Quick and tool free assembly. Simply unfold the frame and secure, adding a vibrant SEG graphic for visual standout. For easy transportation, the counter is supplied in a wheeled bag.



Material	Aluminium, nylon corner, MDF tabletop/internal shelf
Assembly	Tool less
Collapsible	Yes
Counter top	Black
Shelves	Yes
Load bearing	60 kg
Shelf bearing	10 kg
Graphic attachment	Silicone Edged Graphics (SEG)
Transport	FASTFRAME™ wheeled carry bag

Fastframe Counter	FF-COUNTER-BLK	1020(w) x 1025(h) x 410(d) mm
-------------------	----------------	-------------------------------



Bag



Counta



Counta is a lightweight portable indoor PVC demonstrator unit which includes a header panel, poles and shelf supporting poles. Printed graphics can be applied as vinyl directly onto the base wrap. Available in white. Perfect for use in retail environments, one-off events and promotions.

Material	PVC
Assembly	Push-fit - Tool-free
Collapsible	Yes
Counter top	No
Shelves	1
Load bearing	20 kg
Shelf bearing	5 kg
Graphic attachment	Self-adhesive
Transport	Carry bag

Counta	PC607	Counter and front graphic - 805(w) x 2195(h) x 450(d) mm Front graphic - 680(w) x 280(h) x 20(d) mm
--------	-------	--

Carrying bag included



Shelf for storage



Promotional counter, ideal for a retail



Formulate Oval Counter



Lightweight but robust Formulate counter, ideal for promotional or exhibition applications. Display your message at 360° angle with optional washable tension fabric graphic.



Material	Ø30 mm aluminium tubes, MDF tabletop/base
Assembly	Tool-free
Collapsible	No
Counter top	Black
Load bearing	50 kg
Graphic attachment	Silicone Edged Graphics (SEG)
Transport	Carry bag with internal flap

Formulate Oval Counter	FORM-OVAL-CNTR	565(w x 1020(h)) x 397(d) mm
------------------------	----------------	-------------------------------



Silicone Edged Graphics (SEG)



Load bearing maximum: 50kg



illuminated Promotional Counters

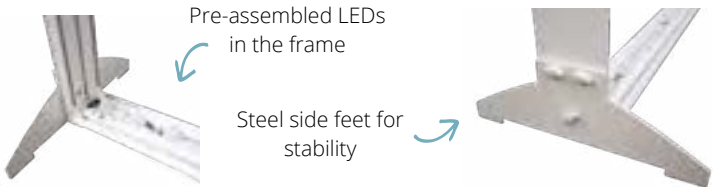
Illumigo™ Counter



This versatile and quick to set-up double-sided counter lightbox is a great all-rounder not only at events but in retail environments from shopping centres to pop-up shops. Part of the Illumigo™ range, the Illumigo™ Counter is easy to assemble with a two-part counter top that secures using a pair of twist out top locators and locking screws. Building the unit is intuitive and tool-free as all the parts are numbered and simply slot together. Two optional graphics complete the look to create an impactful counter ideal for attracting attention in retail, event or exhibition environments.

Material	Aluminium 100 mm, MDF table top
Assembly	Tool-free
Collapsible	Yes
Counter top	White
Load bearing	20 kg
Graphic attachment	Silicone Edged Graphics (SEG)
Transport	Protective box with carry handle
LED System	LED strips included

Illumigo™	ILLGO-COUNTER	1040(w x 1045(h)) x 420(d) mm
Illumigo™ Bag	ILLGO-BAG	460(w) x 1160(h) x 190(d) mm



Insta LED Counter



Attract attention with the Insta LED counter! This illuminated counter with automatic scissor lift system and pre-assembled LED strips can be set up in no time at all and will be perfect for enhancing all your indoor events.

Material	Steel scissor lift, aluminium mounting bracket, MDF tabletop/base
Assembly	Tool-free
Collapsible	Yes
Counter top	Black
Load bearing	30 kg
Shelves	No
Graphic attachment	Silicone Edged Graphics (SEG)
Transport	Carry bag

Insta LED Counter	INSTA-CNTR-BLK	782 w) x 1015(h) x 398(d) mm
-------------------	----------------	------------------------------





Barrier systems improve queue management and help with crowd control.

For pedestrian control, café barriers can be used to make an attractive, professional and functional barrier, creating a temporary space that can be easily reconfigured to suit your needs.

Café barriers are easy to store, assemble, deploy and move to suit your requirements. They are available in economy and premium solutions, depending on your application and budget.





Barriers

Queue management systems can be used to control queues, providing structured and manageable lanes to help marshal customers and are also suitable for indoor or outdoor use.

Pedestrian control barriers

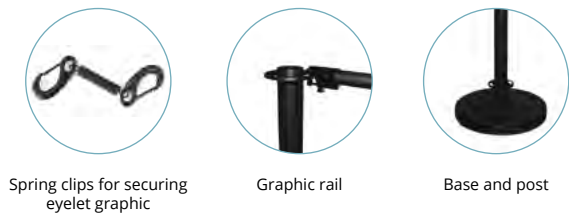
A cost-effective way of defining areas outside restaurants, bars, shopping centre and coffee shops, a complete Café Barrier system requires two posts and bases. To secure the graphic, there are two options; dependent on budget and where the system is being deployed. If the Café Barrier is exposed to strong winds, we recommend a two-rail option ensuring the graphic is secured top and bottom to each post and base. If winds are not an issue but the budget is tight, then we suggest a single rail with two spring clips securing the bottom of the graphic. Rails are available in 1m, 1.5m and 2m sizes, so it is quick and easy to calculate the number of café barriers required to define your space. To connect multiple barriers, add a choice of rails/spring clips plus one additional pole and base. For vibrant hardwearing graphics we can print on PVC.

Economy Café



Material	Aluminium
Graphic area	Double-sided / or single-sided
Graphic attachment	Looped top rail. Looped bottom rail or spring clips
Weight	9.13 kg

Graphic rail 1000 mm	UB214-1000	⌀ 1140(w) x 25(h) mm
Graphic rail 1500 mm	UB214-1500	⌀ 1940(w) x 25(h) mm
Graphic rail 2000 mm	UB214-2000	⌀ 2440(w) x 25(h) mm
Base	UB214B	⌀ 355 (Ø) mm
Post	UB214P	⌀ 960(h) mm
Spring clips (pair)	UB214-SC	



Deluxe Café



Material	Aluminium chrome look finish
Graphic area	Single / double-sided
Graphic attachment	Looped top rail. Looped bottom rail or spring clips
Weight	8.63 kg

Graphic rail 1000 mm	UB215-1000	⌀ 1140(w) mm
Graphic rail 1500 mm	UB215-1500	⌀ 1940(w) mm
Graphic rail 2000 mm	UB215-2000	⌀ 2440(w) mm
Base	UB215B	⌀ 355 (Ø) mm
Post	UB215P	⌀ 960(h) mm
Spring clips (pair)	UB215-SC	





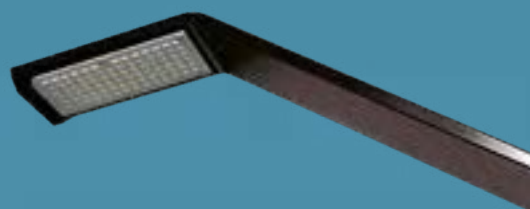
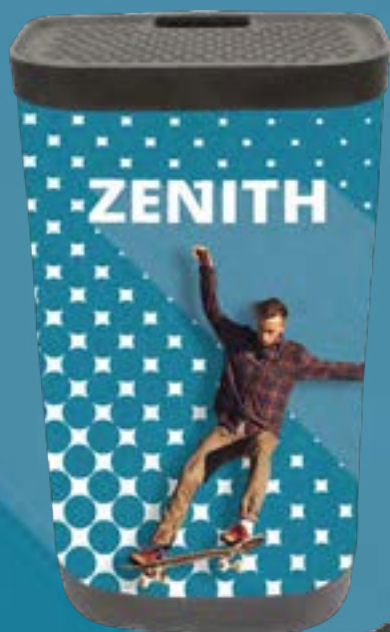
The range of ancillary products include literature holders, lighting solutions for various hardware ranges and transportation cases.

These ancillaries offer flexibility and perfectly complement our product solutions.

Ancillaries

Enhance an exhibition stand by selecting various supporting products from our range of ancillaries that are often used to help promote your brand in a more impactful way, professionally display your latest literature, or add points of interest, making your stand more visible by using spot lights.





Literature holders

Zed-Up Lite



Zed-Up Lite are a popular range of aluminium literature stands that are stylish and highly portable. Quick and easy to deploy, Zed-Up Lite is ideal for exhibitions and displays, folding down for easy transportation in a heavy duty hard case.

Material	Acrylic and anodised aluminium
Colour	Silver
Documents sizes	A4
Pockets	6
Double-sided	Yes
Transport	Hard case (included)

A4 (6 pockets)	AS315-002	256(w) x 1460(h) x 370(d) mm
----------------	-----------	------------------------------



Rigid carry case included



Lighting (standard)

Powerspot 950/1000 LED



Economical black LED spotlight particularly suitable for use with Pop-up stands.

Material	Aluminium and plastic
Positioning	270° - Straight arm
Watt output	12 watt (1400 Lumens/5500 Kelvins)
Watt consumption	12 Watt (1400 Lumens/5500 Kelvins)
Linked lights	2 max
Double kit includes	2 spotlights + 2.5m linking lead + 1 transformer
Power lead UK & Euro	Yes (cross head screwdriver needed)



Double kit	PS950-1000-LED-BDLK	103(w) x 425(h) x 29(d) mm
------------	---------------------	----------------------------



Transformer included

Lighting (premium)

LED Floodlight



The LED Floodlight is the new stylish and economical way to illuminate a range of exhibition stands including Pop-ups, Formulate and a range of modular systems. Despite the compact design, this small LED light is still capable of producing 1200 Lumens but still only consuming a small amount of energy, making it far more efficient than the halogen equivalents. Link up to 5 lights together from one transformer, with handy linking cables.

Material	Aluminium and plastic
Watt output	80 watt
Watt consumption	12 watt (1200 Lumens/5631 Kelvin)
Linked lights	Link up to five to one transformer
Double kit includes	2 spotlights + 2.5m linking lead + 1 transformer
Power lead UK & Euro	Yes (cross head screwdriver needed)



Double kit	LED-FLOOD-ARM-BDLK	295(w) x 483(h) x 60(d) mm
------------	--------------------	----------------------------

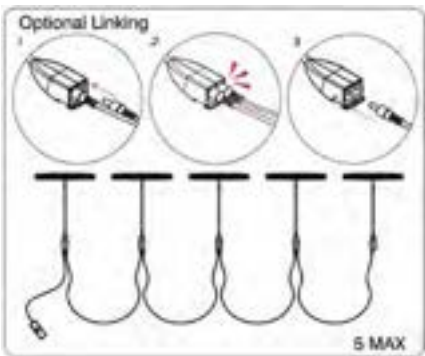
Connect up to 5 lights with one transformer



Transportation box



Transformer included



LED Strip Light



The LED Strip light is designed to work with a wide range of exhibition stands including, Pop-ups, Formulate and a range of modular stands. It has a unique wide head design feature, allowing for a wider spread of light, helping you illuminate more of your message. Link up to 5 lights together from one transformer, with handy linking cables.

Material	Aluminium and plastic
Watt output	80 watt
Watt consumption	12 watt (1200 Lumens/5631 Kelvin)
Linked lights	Link up to five to one transformer
Double kit includes	2 spotlights + 2.5m linking lead + 1 transformer
Power lead UK & Euro	Yes (cross head screwdriver needed)



Swivel head

Double kit	LED-STRIP-ARM-BDLK	Ⓢ, 100(w) x 520(h) x 35(d) mm
------------	--------------------	-------------------------------

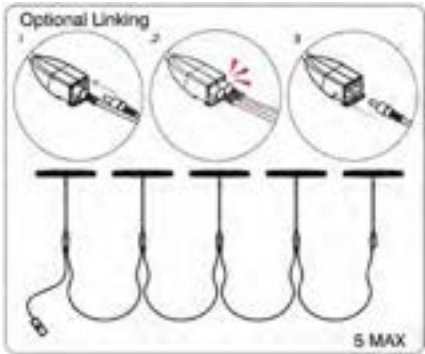


Transportation box



Transformer included

Connect up to 5 lights with one transformer



LED Exhibition Light



Specifically designed to work in conjunction with the Vector channel; this latest design requires no extra fitting, just plug in and switch on. Not only does the slick design make the LED Exhibition Light stand out from the crowd, the clever design cast out of aluminium allows any heat to dissipate over the entire body of the light, stopping any localised heat, which allows for long use with no overheating. Link up to 5 lights together from one transformer, with handy linking cables.

Material	Aluminium and plastic
Watt output	80 watt
Watt consumption	12 watt (1200 Lumens/5631 Kelvin)
Linked lights	Link up to five to one transformer
Double kit includes	2 spotlights + 2.5m linking lead + 1 transformer
Power lead UK & Euro	Yes (cross head screwdriver needed)



Ideal for modular stands

Double kit	LED-EXHIB-ARM-BDLK	Ⓢ, 50(w) x 455(h) x 55(d) mm
------------	--------------------	------------------------------

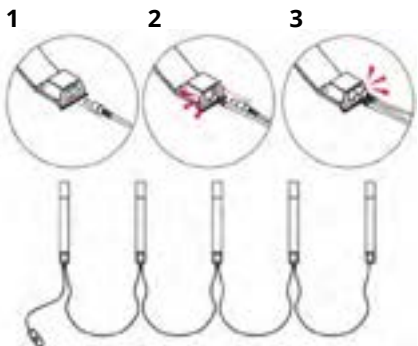


Transportation box







Transformer included

Connect up to 5 lights with one transformer



Lighting ancillaries

Recommended fixings for lighting

Integrated fixing			
	Universal fixing kit US901-C	Vector fitting VLF	30mm Ø Tube clamp US903
Compatible with :			
 Spot LED Flood LED-FLOOD-ARM-BDLK	> Quick + <		

Convert your UK plug into EU version



Portable transportation cases

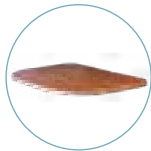
Zenith



Tough moulded polyethylene Zenith case offers a multitude of features. Versatile ultra-portable transport solution with maximum storage for pop-ups, backwalls, roller banners and extrusions, they also double up as counters with optional extra graphic wrap and table top. The standard case will house a 3x5 pop-up system and graphics. Secure Internal dividers protect graphics and the case can be locked using padlocks (not supplied).

Material	Medium-density polyethylene (MDPE) / Metal
Wheels	2
Handle	1
Accessories	Beech table top / graphic wrap

Zenith	AC600	(External dimensions) 600(w) x 956(h) x 400(d) mm
Tabletop (beech)	CO401-C	15(h) x 640 (l) x 420 (p) mm



Zenith case thermoformed tabletop in beech



Foam protected lid holds two LED lights



Graphic wrap (optional)



With wheels for easy transportation

956 mm

Fastframe™ Wheeled Bag



This padded wheeled bag can hold up to four FastFrame hardware pieces within a 1200mm width.

Material	Nylon
Colour	Black
Wheels	Yes
Handle	1

Wheeled Bag	FF-WB	1415(w) x 390(h) x 244(d) mm
-------------	-------	------------------------------



* Can accommodate up to 4x 1200x2400 fastframe hardware and graphics.



Carry handle



Wheels ø50mm

Illumigo™ Bag



Wheeled bag for Illumigo™ 2x1, Retail, ONE or the Illumigo™ Counter.

Material	Nylon and inner MDF
Colour	Black
Wheels	Yes
Handle	2

Illumigo™ bag	ILLGO-BAG	Ⓢ (Internal dimensions) 460(w) x 1160(h) x 190(d) mm
---------------	-----------	--



Wheeled bag



Inner compartment
for graphic



Carry handle



Modular carrying bag



Ideal wheeled bag for transporting, protecting and storing exhibition stands, especially those made from standard modules (Vector & Formulate).

Material	Nylon
Colour	Black
Wheels	Yes
Handle	2

Modular Bag	AB-MODULAR-01	Ⓢ 340(w) x 1400(h) x 290(d) mm
-------------	---------------	--------------------------------



Carry handle



Wheels ø40mm



With graphic
storage







A

Ancillaries	53
Ancillaries Dome base (single)	53
Ancillaries Flat foot (single)	53
Ancillaries LCD screen bracket	53
Ancillaries Linear foot (pair)	53
Ancillaries Panel Kits	121
Ancillaries Roll of magnetic tape	53
Ancillaries Steel tape	53
Arena components	75
Arena Custom Stand 16m ²	76
Arena Custom Stand 36m ²	76
Arena Custom Structure	77
Arena Gantry free-standing design	77
Arena Hanging Structure	77
Arena Junction Sections	75
Arena Straight Sections	75
Arena Structures	74
A-sign Board	112

B

Barracuda	101
Baseline Jumbo Panel Kits	119
Baseline Panel and Pole Kits	116
Baseline Panel Folding Kits	118
Baseline Tabletop Panel Kits	117
Baseline Wheeled Panel Kits	119
Bases	121
Basic Curved Counter	139
Beijing Lite	107
Blizzard	107
Bora Tent	135
Breeze	106

C

Clips	121
Counta	140

D

Delta Lite	100
Deluxe Café	146
Dragonfly 2	99

E

Economy Café	146
--------------	-----

F

Fabric tube walls	89
Fastframe™	55
Fastframe™ 2-Way Connector - Single	65
Fastframe™ 4-Way Connector - Single	65
Fastframe™ 45° Connector Kit - Top & Bottom	63
Fastframe™ 90° Connector Kit - Top & Bottom	63
Fastframe™ 90° Left Inside Connector Kit - Pair	64
Fastframe™ 90° Middle Connector Kit - Pair	64
Fastframe™ 90° Right Inside Connector Kit - Pair	64
Fastframe™ 950x2000	59, 103
Fastframe™ 950x2400	59, 103
Fastframe™ 950x2500	60, 104
Fastframe™ 1000x500 - 2 Pack	58, 102
Fastframe™ 1000x1000 - 2 Pack	58, 102
Fastframe™ 1000x2000	60, 104
Fastframe™ 1000x2400	61, 105
Fastframe™ 1000x2500	61, 105
Fastframe™ 1200x2400	62, 106
Fastframe™ Arch Brace Kit	66
Fastframe™ Arch Connector Kit - 4 Brackets	64

Fastframe™ Backwall Kit - 2 Metre	87
Fastframe™ Backwall Kit - 3 Metre	88
Fastframe™ Counter	140
Fastframe™ Cross Connector Kit - Top & Bottom	64
Fastframe™ Door Kit	66
Fastframe™ Full foot (Single)	63
Fastframe™ Half Middle Foot (Single)	63
Fastframe™ Middle Full Foot (Single)	63
Fastframe™ Monitor Kit	66
Fastframe™ Pop-up Kit	87
Fastframe™ Shelf	66
Fastframe™ Side Half Feet (Pair)	63
Fastframe™ Small Middle Foot (Single)	63
Fastframe™ Stand 6m ²	67
Fastframe™ Stand 9m ²	68
Fastframe™ Stand 12m ²	69
Fastframe™ Stand 15m ²	70
Fastframe™ Stand 18m ²	71
Fastframe™ Stand 24m ²	72
Fastframe™ T-Shape Connector Kit - Top & Bottom	64
Fastframe™ Wheeled Bag	66, 154
Fastframe™ Y Shape Connector Kit - Top & Bottom	64
Formulate Circular Hanging Structure	78
Formulate Flat Panel Hanging Structure	79
Formulate Horizontal Curve	89
Formulate Monolith	94
Formulate Monolith Eco	94
Formulate Oval Counter	141
Formulate Rectangular Hanging Structure	79
Formulate Round Table	114
Formulate Shadow	112
Formulate Square Hanging Structure	78
Formulate Straight	89
Free-standing flag bases	126
Free-standing flags	124
Free-standing signs	110

G

Grasshopper	98
-------------	----

H

Hanging structures	78
Hook Velcro	121
Hop-up Counta	138
Hop-up Impact Curved	86
Hop-up Impact Straight	86
Horizon	90

I

Illumigo™ Bag	155
Illumigo™ Counter	16, 142
Illumigo™ One	14
Illumigo™ Retail	15
Illumigo™ Up	13
illuminated Promotional Counters	142
Illuminova™ Free-standing	10
Illuminova™ Hanging Structure	12
Illuminova™ Modules	38
Illuminova™ wall mounted	8
Impact Pop-up Curved	83
Impact Pop-up Curved Bundle	83
Impact Pop-up Straight	82
Impact Pop-up Straight Bundle	82
Inflatable tents	135
Insta LED Counter	142

L

LED Exhibition Light	152
LED Floodlight	151
LED Strip Light	152
Lighting	151
Lighting ancillaries	153
Literature holders	150

M

MagLink	21
Mantis	97
Merlin	101
Mistral	128
Mobile flags	129
Modular carrying bag	155
Modulate™	21
Modulate™ 400mm Extension Kit	27
Modulate™ ancillaries	27
Modulate™ Counter	27, 139
Modulate™ Door	26
Modulate™ Feet (pair)	27
Modulate™ Half Feet (pair)	27
Modulate™ Slope	26
Modulate™ Stand 6m²	28
Modulate™ Stand 9m²	29
Modulate™ Stand 12m²	30
Modulate™ Stand 15m²	31
Modulate™ Stand 18m²	32
Modulate™ Stand 24m²	33
Modulate™ Straight	24
Modules Vector - Arches	39
Monsoon	113
Mosquito	98

O

Orient +	99
----------	----

P

Panel Bags	121
Panel Kits	116
Pedestrian control barriers	146
Pegasus	90
Pegasus 3m	91
Pop-up backwalls	82
Pop-up Counta	138
Pop-up tents	132
Portable transportation cases	154
Post Module	39
Post / wall mounted flags	128
Powerspot 950/1000 LED	151
Promotional counters	138

Q

Quick+ Curved Bundle	85
Quick+ Curved Kit	84
Quick+ Straight Bundle	85
Quick+ Straight Kit	84

R

Roller banners (economy)	97
Roller banners (premium)	101
Roller banners (standard)	99

S

Sentry	110
Spotlight Clamp for Formulate / Modulate™ Tube	27
Stowaway	113
Street Flag	129
Suspended signs	115
Symbol 111	

T

Tabletop Displays	106
Tension banners (X Banner)	107
Tension textile systems	94
Tension walls	90
Thunder 2	100
Trappa Frame	115
Twista Lite	115

V

Vector	34
Vector 3m Wall	47
Vector 6m Wall	47
Vector Media	95
Vector Modules ancillaries	48
Vector Modules Extensions	40
Vector Modules Flat Foot	48
Vector Modules Flat Foot for retail	48
Vector Modules Quarter Side Feet (pair)	48
Vector Modules Quick-fix Mounting Bracket	48
Vector Modules Side flat feet (pair)	48
Vector Modules - Storage	40
Vector Modules - Walls	36
Vector Stand 6m²	41
Vector Stand 9m²	42
Vector Stand 12m²	43
Vector Stand 15m²	44
Vector Stand 18m²	45
Vector Stand 24m²	46

W

Wall mounted signs	115
Wasp	97
Wedge	110
Whirlwind	111
Wind Dancer	127

Z

Zed-up Lite	150
Zenith	154
Zoom+ Arch	127
Zoom+ Crest	124
Zoom+ Edge Flag	125
Zoom+ Feather	124
Zoom+ Quill	124
Zoom Tent	133
Zoom Tent 3x3 Sky Banner	133
Zoom Tent Eco	132



www.finedesign.co.uk